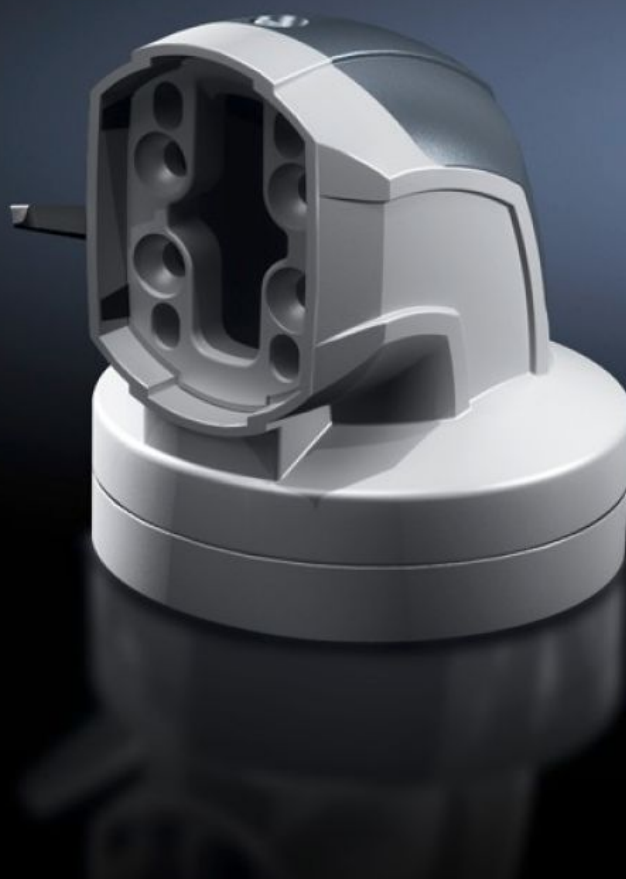


Rittal – The System.

Faster – better – everywhere.



CP 6206.380

Angle coupling 90° CP 60

State: 17.08.2025. (Source: [rittal.com/hr-hr](https://www.rittal.com/hr-hr))

ENCLOSURES

POWER DISTRIBUTION

CLIMATE CONTROL

IT INFRASTRUCTURE

SOFTWARE & SERVICES

FRIEDHELM LOH GROUP



CP 6206.380 - Angle coupling 90° CP 60 for support arm connection Ø 130 mm

For swivel mounting of the enclosure on the horizontal part of the support arm system. Enclosure may be suspended or top-mounted. Removable cover for simple cable entry.

Features

| | |
|----------------------------|---|
| Model No. | CP 6206.380 |
| Product description | For swivel mounting of the enclosure on the horizontal part of the support arm system. Enclosure may be suspended or top-mounted. Removable cover for simple cable entry. |
| Material | Angle coupling: Cast aluminium/die-cast zinc Cover: Plastic |
| Colour | Angle coupling: RAL 7035 Cover: RAL 7024 |
| Supply includes | Seals Grub screws Adjusting screws Self-tapping screws for support section attachment |
| Rotating/tilting | Yes |
| Rotation angle/swivel area | approx. 310°, lockable via clamping levers The range of rotation can be limited by inserting the grub screws provided |
| Packs of | 1 pc(s). |
| Net weight | 1.8 |
| Gross weight | 1.953 |
| Customs tariff number | 79070000 |
| EAN | 4028177684393 |
| ETIM 9 | EC000882 |
| ECLASS 8.0 | 27400556 |

Approvals

Explanations

Manufacturer's declaration