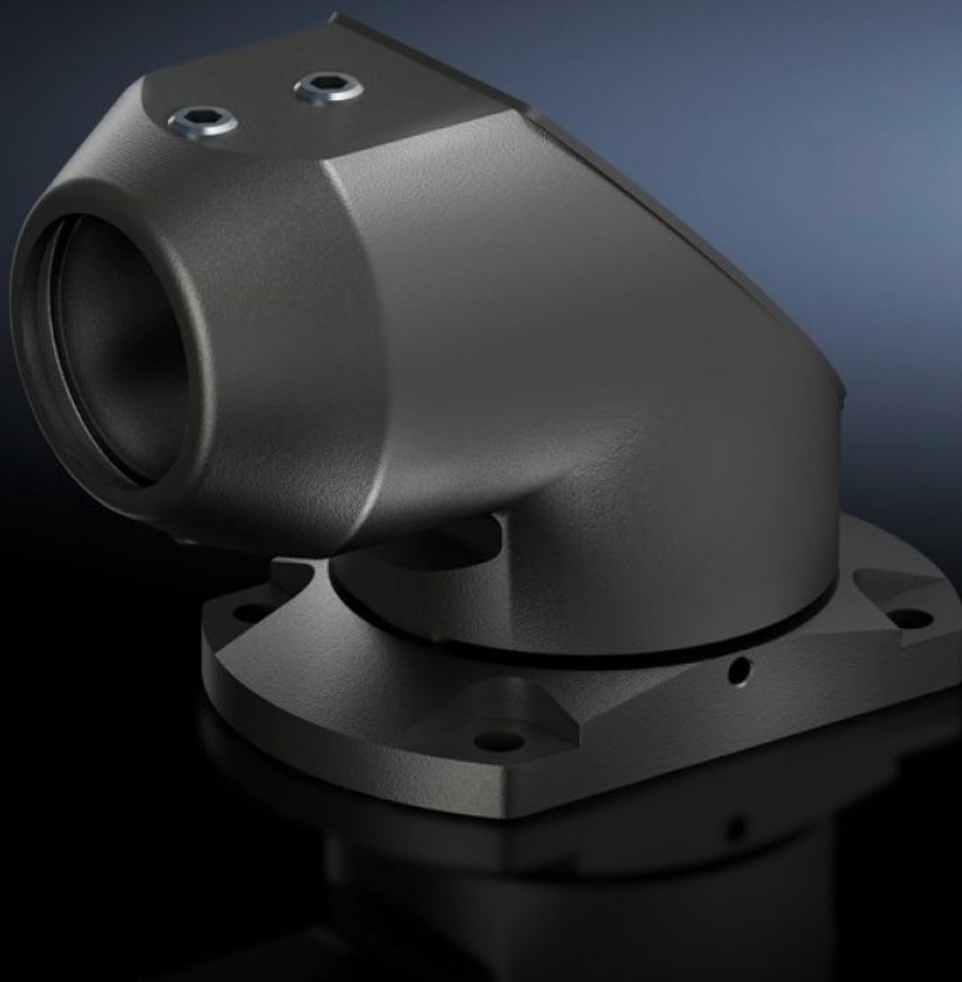


Rittal – The System.

Faster – better – everywhere.



CP 6501.160

Top-mounted joint CP 40, steel

State: 13.07.2025. (Source: [rittal.com/hr-hr](https://www.rittal.com/hr-hr))

ENCLOSURES

POWER DISTRIBUTION

CLIMATE CONTROL

IT INFRASTRUCTURE

SOFTWARE & SERVICES

FRIEDHELM LOH GROUP



CP 6501.160 - Top-mounted joint CP 40, steel

For swivel mounting of the support arm system on horizontal surfaces – also suitable for suspending from the ceiling.

Features

Model No.	CP 6501.160
Material	Cast aluminium
Surface finish	Textured paint
Colour	RAL 7024
Rotating/tilting	Yes
Rotation angle/swivel area	approx. 300°
Packs of	1 pc(s).
Net weight	1.699
Gross weight	1.735
Customs tariff number	76169990
EAN	4028177436084
ETIM 9	EC000882
ECLASS 8.0	27400556

Approvals

Explanations	Manufacturer's declaration
--------------	----------------------------