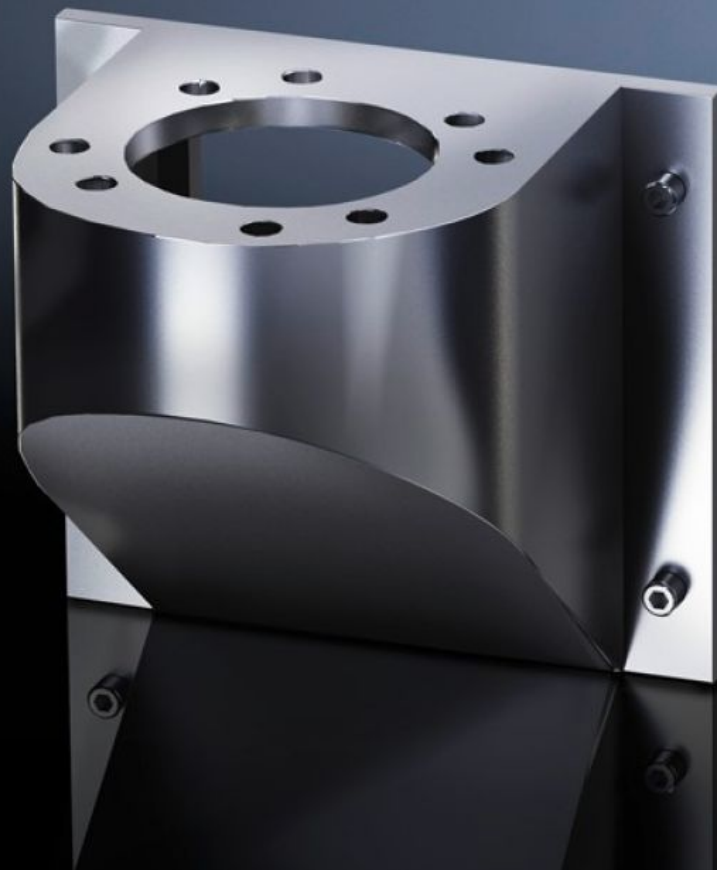


**Rittal – The System.**

Faster – better – everywhere.



**CP 6665.500**

**Wall console CP 40, stainless steel**

State: 14.04.2026. (Source: [rittal.com/hr-hr](http://rittal.com/hr-hr))

ENCLOSURES

POWER DISTRIBUTION

CLIMATE CONTROL

IT INFRASTRUCTURE

SOFTWARE & SERVICES

FRIEDHELM LOH GROUP



# CP 6665.500 - Wall console CP 40, stainless steel

## Features

|                                      |  |
|--------------------------------------|--|
| Model No.                            | CP 6665.500  |
| Design                               | Front, hole Ø 9 mm   |
| Applications                         | With holes for mounting<br>Base mount, swivel, CP 40, stainless steel (6663.500), with 4 screws<br>Wall/base mount, rigid, CP 40, stainless steel (6663.000), with 4 screws and nuts |
| Material                             | Stainless steel 1.4301 (AISI 304)  |
| IP protection category to IEC 60 529 | IP 66 to IEC 60 529, 2014-09<br>IP X9 to IEC 60 529, 2014-09   |
| Rifid y/n                            | Yes  |
| Packs of                             | 1 pc(s).   |
| Net weight                           | 1,6 kg   |
| Gross weight                         | 1,755 kg   |
| Customs tariff number                | 83024900   |
| ETIM 9                               | EC000882   |
| ECLASS 8.0                           | 27400556   |
| Product description                  | CP Wall console CP 40, front mounting, stainless steel, 1.4301   |

## Approvals

|              |                            |
|--------------|----------------------------|
| Explanations | Manufacturer's declaration |
|--------------|----------------------------|