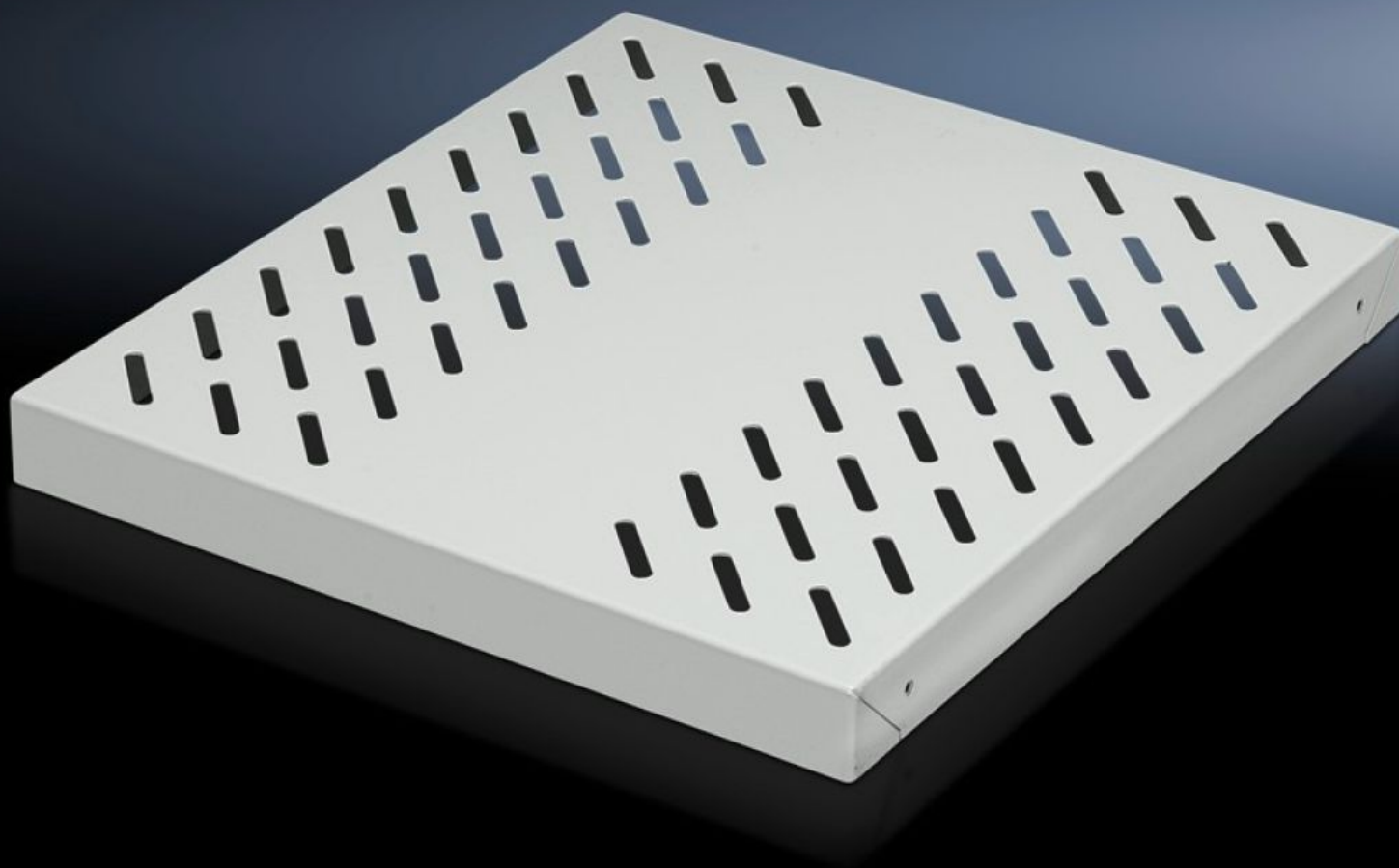


# Rittal – The System.

Faster – better – everywhere.



## DK 7828.970

## Component shelf, heavy duty

State: 01.08.2025. (Source: [rittal.com/hr-hr](https://www.rittal.com/hr-hr))

ENCLOSURES

POWER DISTRIBUTION

CLIMATE CONTROL

IT INFRASTRUCTURE

SOFTWARE & SERVICES

FRIEDHELM LOH GROUP



# DK 7828.970 - Component shelf, heavy duty for network enclosures TS with cranked mounting angles

For static installation between two 482.6 mm (19 1/8") mounting levels, they are located directly onto the cranked mounting angles, load capacity: 75 kg for zinc-plated version, 100 kg for spray-finished version.

## Features

Model No.	DK 7828.970
Design	Zinc-plated
Product description	For static installation between two 482.6 mm (19 1/8") mounting levels. The component shelf is located directly onto the cranked mounting angles.
Material	Sheet steel
Surface finish	Zinc-plated
Supply includes	Assembly parts
Distance between mounting levels	698 mm
Load capacity	75 kg surface load, static
Note	Not suitable for combination with telescopic slides.
Dimensions	Width: 452.5 mm Height: 20 mm Depth: 678 mm
Packs of	1 pc(s).
Net weight	3.621
Gross weight	3.821
Customs tariff number	94039910
EAN	4028177233317
ECLASS 8.0	27189261

# Tender text

Component shelf for 2 mounting levels, static installation

Component shelf for static installation between two 19" mounting levels.

Mounted directly on the mounting angles.

The component shelf uses ventilation slots, which ensures economical air exchange between the separate layers.

For mounting on cranked mounting angles.

Load capacity: 75 kg surface load

Material: Sheet steel

Spray finish: RAL 7035

For distance between levels: 700 mm