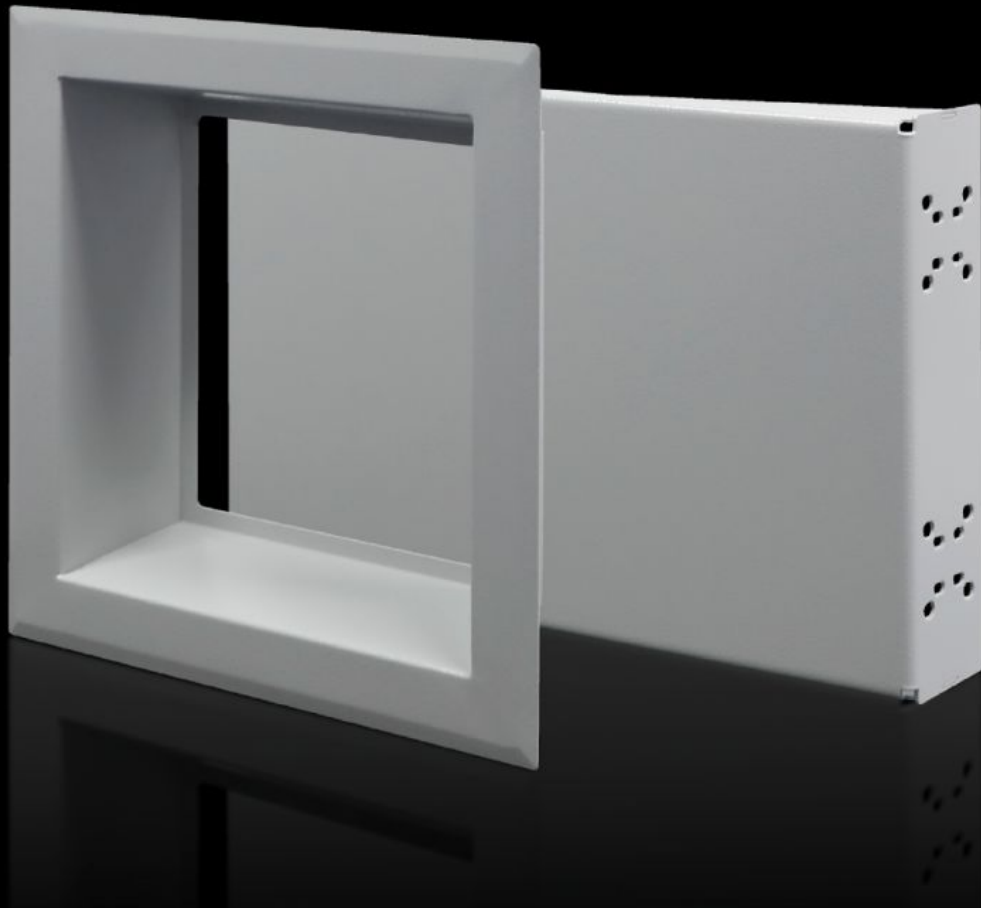


Rittal – The System.

Faster – better – everywhere.



SZ 7993.146

Main switch installation adaptor

State: 04.05.2026. (Source: rittal.com/hr-hr)

ENCLOSURES

POWER DISTRIBUTION

CLIMATE CONTROL

IT INFRASTRUCTURE

SOFTWARE & SERVICES

FRIEDHELM LOH GROUP



SZ 7993.146 - Main switch installation adaptor for door installation

Master switch adaptor for installation in the Rittal enclosure system VX25, TS 8 and VX SE. The master switch adaptor allows a master switch handle to be fitted in a fixed, recessed position in the enclosure door.

Features

Model No.	SZ 7993.146
Product description	Master switch adaptor for installation in the Rittal enclosure system VX25, TS 8 and VX SE. The master switch adaptor allows a master switch handle to be fitted in a fixed, recessed position in the enclosure door.
Material	Sheet steel, 1.5 mm
Surface finish	Powder-coated, textured paint
Colour	RAL 7035
Supply includes	Switch holder Sealing frame Cellular polyethylene
To fit door width	500 mm
Installation options	The switch holder to accommodate the rotating drive is mounted directly in front of the door on one or two punched sections with mounting flanges
Assembly instruction	The hole for inserting the rotating drive may be drilled individually. A cellular polyethylene adhesive seal for the rear of the sealing frame is supplied loose. Press onto the mounting plate with the door closed.
Dimensions	Width: 310 mm Height: 450 mm Depth: 90 mm
To fit enclosure type	VX VX SE TS

Features

IP protection category to IEC 60529	IP 55
Packs of	1 pc(s).
Net weight	5,72 kg
Gross weight	6,72 kg
Customs tariff number	73269098
ETIM 9	EC000327
ECLASS 8.0	27409217
Product description	SZ main switch installation adapter for door width 500 mm