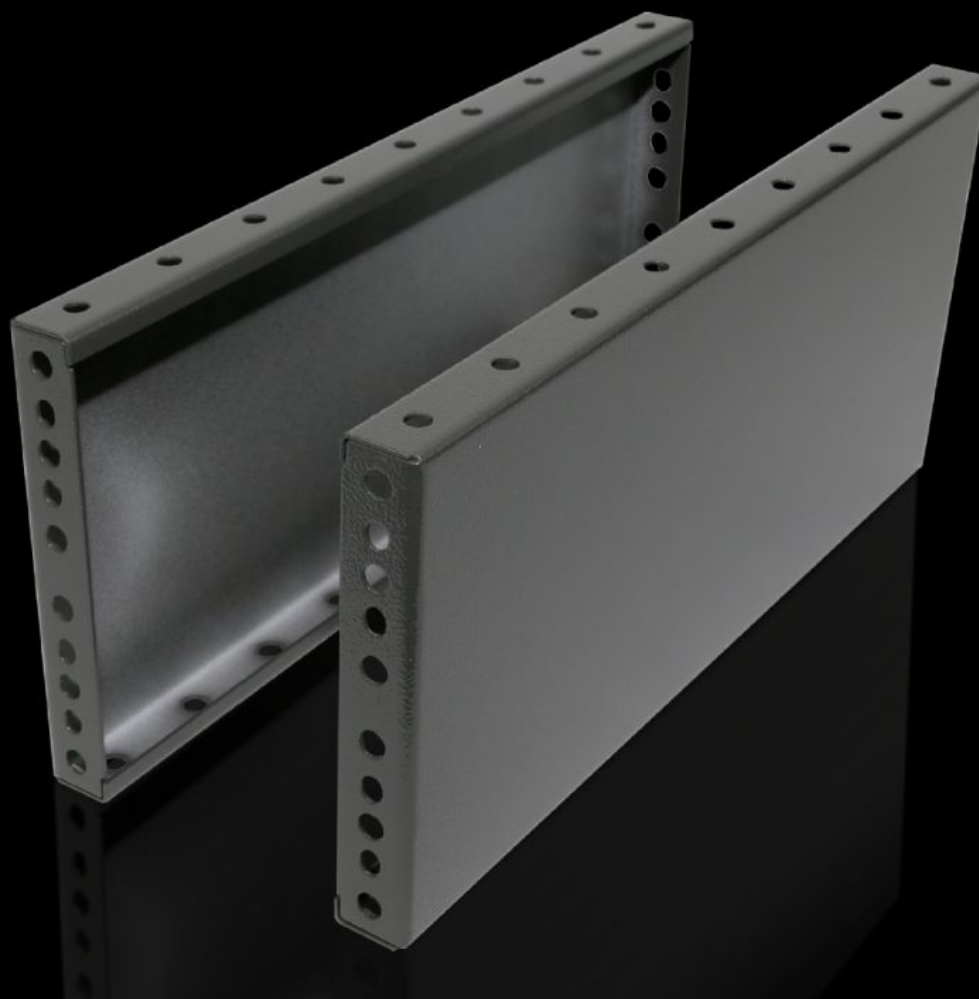
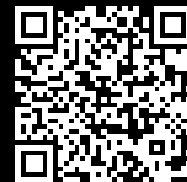


Rittal – The System.

Faster – better – everywhere.



TS 8602.060

Base/plinth trim panels, side, 200 mm

State: 28.08.2025. (Source: [rittal.com/hr-hr](https://www.rittal.com/hr-hr))

ENCLOSURES

POWER DISTRIBUTION

CLIMATE CONTROL

IT INFRASTRUCTURE

SOFTWARE & SERVICES

FRIEDHELM LOH GROUP



TS 8602.060 - Base/plinth trim panels, side, 200 mm for base/plinth components front and rear

For mounting between the base/plinth components. At 200 mm height, two 100 mm base/plinth trims may be used.

Features

Model No.	TS 8602.060
Product description	For mounting between the base/plinth components. At 200 mm height, two 100 mm base/plinth trims may be used.
Material	Sheet steel
Surface finish	Spray-finished
Colour	RAL 7022
Supply includes	2 base/plinth trim panels Assembly parts
Assembly instruction	Base/plinth trim panels, side, 100 mm, may be installed rotated through 90° to stabilise bayed base/plinth components. The base/plinth baying bracket is required for this purpose
Dimensions	Height: 200 mm
To fit	Enclosure type: TS: = 600 mm Enclosure type: SE Enclosure type: CM Enclosure type: TP Enclosure type: PC Enclosure type: IW Enclosure type: TS IT
Packs of	2 pc(s).
Net weight	3.186
Gross weight	3.385
Customs tariff number	94039910
EAN	4028177208698

Features

ECLASS 8.0

27182003