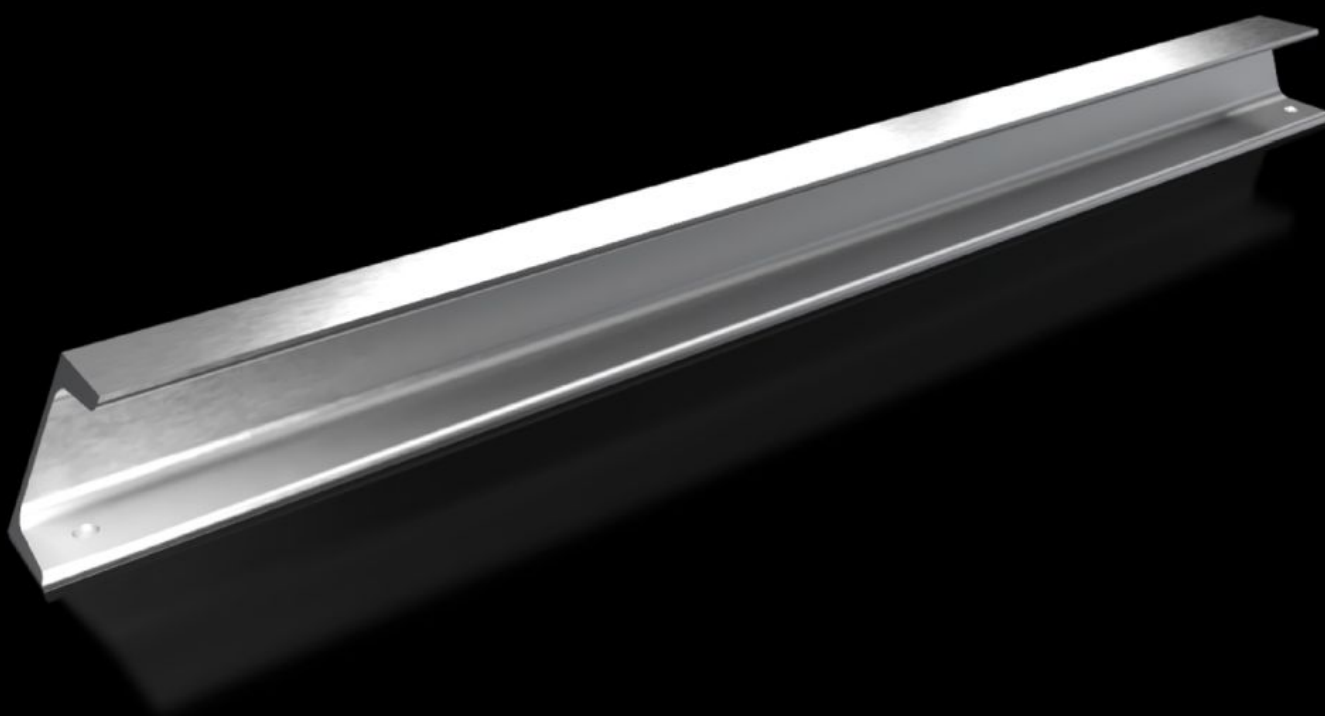
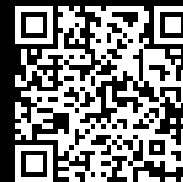


Rittal – The System.

Faster – better – everywhere.



TS 8612.980

Support rail 65 x 42 mm

State: 10.09.2025. (Source: [rittal.com/hr-hr](https://www.rittal.com/hr-hr))

ENCLOSURES

POWER DISTRIBUTION

CLIMATE CONTROL

IT INFRASTRUCTURE

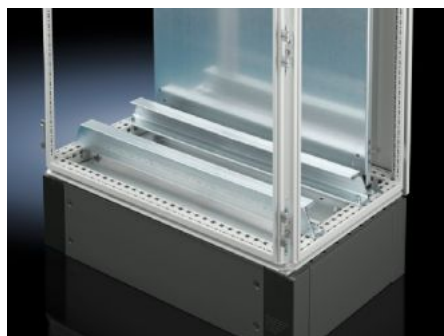
SOFTWARE & SERVICES

FRIEDHELM LOH GROUP



TS 8612.980 - Support rail 65 x 42 mm for VX, TS, VX SE

For heavy installed equipment such as base isolators or transformers.



Features

| | |
|-------------------------------|---|
| Model No. | TS 8612.980 |
| Product description | For heavy installed equipment such as base isolators or transformers. |
| Material | Steel |
| Surface finish | Zinc-plated |
| Supply includes | Assembly parts |
| Installation options | On the inner mounting level of the VX enclosure section In VX SE on the inner mounting level, on the enclosure section in conjunction with adaptor rail VX |
| To fit | Enclosure type: VX TS VX SE Width: = 800 mm |
| Packs of | 2 pc(s). |
| Net weight | 9.912 |
| Gross weight | 10.85 |
| PCF per pack (cradle-to-gate) | 39.8 kg CO2 eq (Cat B) |
| Note on PCF category | Category B: PCF value (cradle-to-gate) based on the product weight, approximately calculated and self-declared |
| Customs tariff number | 73269098 |

Features

| | |
|------------|---------------|
| EAN | 4028177522886 |
| ETIM 9 | EC001285 |
| ECLASS 8.0 | 27189234 |