

Rittal – The System.

Faster – better – everywhere.



VX 8618.300

Lock insert

State: 20.08.2025. (Source: [rittal.com/hr-hr](https://www.rittal.com/hr-hr))

ENCLOSURES

POWER DISTRIBUTION

CLIMATE CONTROL

IT INFRASTRUCTURE

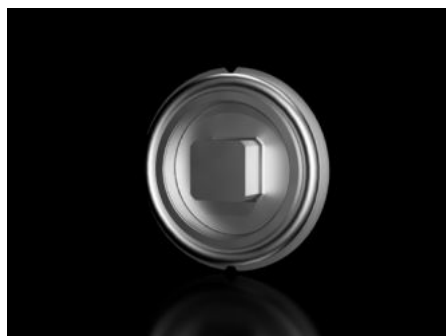
SOFTWARE & SERVICES

FRIEDHELM LOH GROUP



VX 8618.300 - Lock insert type G

For handles and enclosures.



Features

Model No.	VX 8618.300
Design	G
Material	Die-cast zinc
Installation in handle system	Comfort handle VX for padlock and lock inserts
Lock	Lock insert: 7 mm square
To fit enclosure type	VX VX IT
Packs of	1 pc(s).
Net weight	0.015
Gross weight	0.016
Customs tariff number	83016000
EAN	4028177921818
ETIM 9	EC000743
ECLASS 8.0	27409218