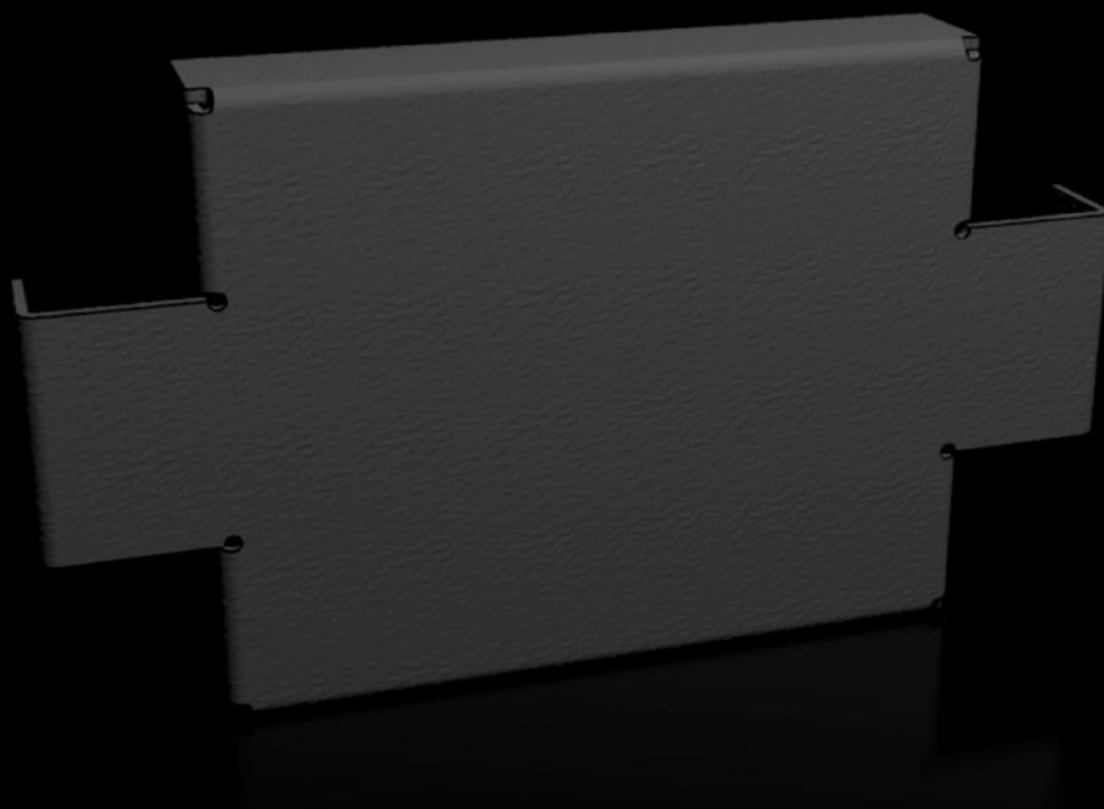


Rittal – The System.

Faster – better – everywhere.



VX 8620.030

Base/plinth trim panels, side, 100 mm

State: 09.05.2024. (Source: [rittal.com/hr-hr](https://www.rittal.com/hr-hr))

ENCLOSURES

POWER DISTRIBUTION

CLIMATE CONTROL

IT INFRASTRUCTURE

SOFTWARE & SERVICES

FRIEDHELM LOH GROUP



VX 8620.030 - Base/plinth trim panels, side, 100 mm for base/plinth system VX, sheet steel

Base/plinth trim panels are used in the depth to finish off a base/plinth unit at the sides. The trim panel may be used between two bayed enclosures to stabilise the base/plinth corner pieces. The 100 mm high trim panels may also be used in a 200 mm high base/plinth and combined.

Features

| | |
|-----------------------|--|
| Model No. | VX 8620.030 |
| Product description | To finish off a base/plinth unit at the sides and for additional stabilisation or for the interior configuration of bayed base/plinths. One 200 mm high or two 100 mm high trim panels may optionally be fitted on 200 mm high base/plinths. |
| Material | Sheet steel |
| Colour | RAL 9005 |
| Supply includes | Assembly parts |
| Dimensions | Height: 100 mm |
| To fit | Depth: = 300 mm |
| Weight/pack | 0,614 kg |
| Packs of | 2 pc(s). |
| Customs tariff number | 94039910 |
| EAN | 4028177922174 |
| E-Number Sweden | E3465061 |
| ETIM 7.0 | EC000721 |
| ECLASS 8.0 | 27182003 |

Approvals

Approvals

Approvals

UL + C-UL (listed)

UL + C-UL - FTTA