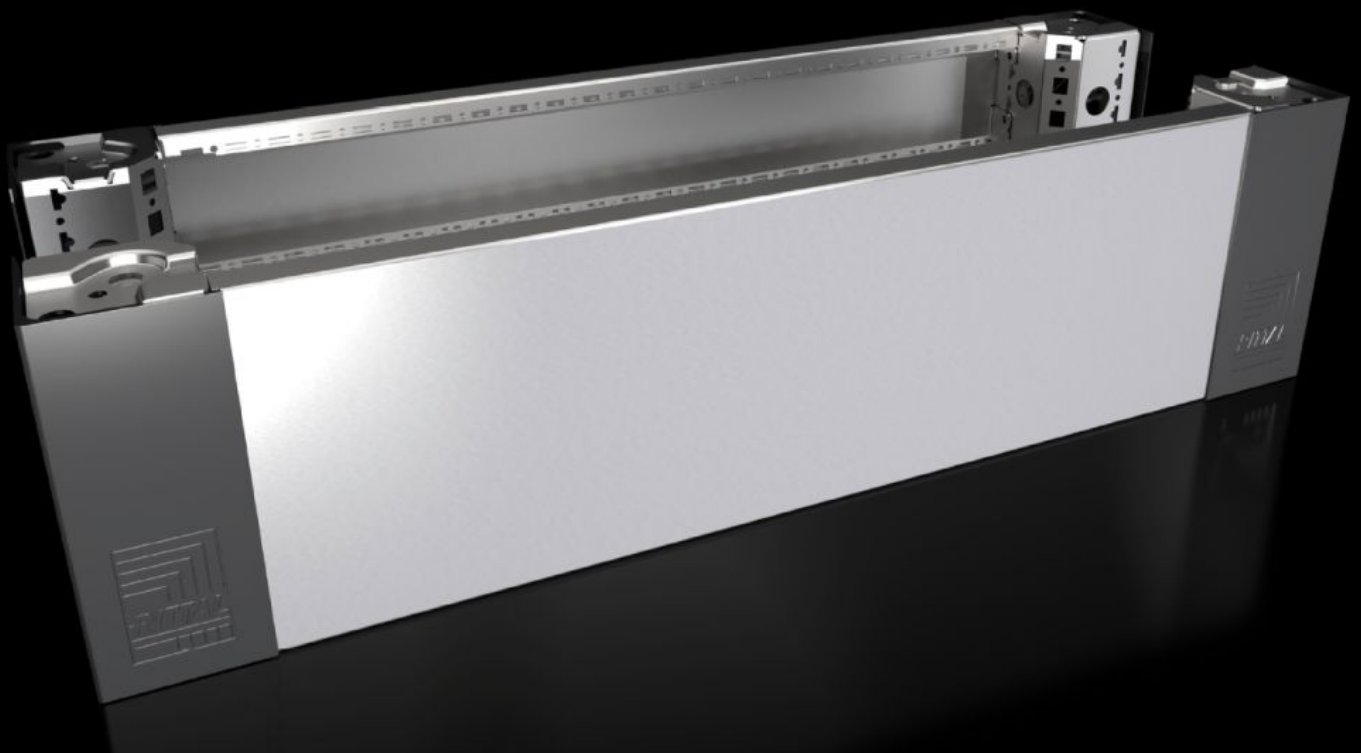


# Rittal – The System.

Faster – better – everywhere.



## VX 8620.061

# Base/plinth corner pieces with base/plinth trim panels, front and rear, 200 mm, stainless steel

State: 09.04.2026. (Source: [rittal.com/hr-hr](http://rittal.com/hr-hr))

ENCLOSURES

POWER DISTRIBUTION

CLIMATE CONTROL

IT INFRASTRUCTURE

SOFTWARE & SERVICES

FRIEDHELM LOH GROUP



# VX 8620.061 - Base/plinth corner pieces with base/plinth trim panels, front and rear, 200 mm, stainless steel

Base/plinth corner pieces with moulded self-positioning to the bayed enclosure system, for use with or without trim panels depending on the application. Large openings in the base/plinth corner piece for optimum access to the screw-fastening point may be concealed with a corner and baying cover.

## Features

Model No.	VX 8620.061
Product description	Base/plinth corner pieces with moulded self-positioning to the bayed enclosure system, for use with or without trim panels depending on the application. Large openings in the base/plinth corner piece for optimum access to the screw-fastening point may be concealed with a corner and baying cover.
Material	Base/plinth corner piece: Stainless steel 1.4301 (AISI 304) Base/plinth trim panel front/rear: Stainless steel 1.4301 (AISI 304) Corner and baying cover: Plastic
Surface finish	Trim panel: Brushed, grain size 400
Supply includes	4 base/plinth corner pieces 4 corner covers 1 baying cover 1 base/plinth trim panel, front/rear, 200 mm high 2 base/plinth trim panels, front/rear, 100 mm high Assembly parts
Note	Side base/plinth trim panels finish off a base/plinth unit or provide additional stabilisation between base/plinths or enable interior configuration of the base/plinth Components from the 1st generation base/plinth system cannot be combined with components from the 2nd generation base/plinth system
Dimensions	Height: 200 mm
To fit	Width: = 800 mm

# Features

---

Type rating to UL 50E	Type 1 Type 3R Type 4 Type 4X Type 12
Weight/pack	10,6 kg
Packs of	2 pc(s).
Net weight	7,96 kg
Gross weight	8,36 kg
Customs tariff number	94039910
ETIM 9	EC000721
ECLASS 8.0	27182003
Product description	VX Base/plinth corner piece, with base/plinth trim panel, front and rear, H: 200 mm, for W: 800 mm, stainless steel, 1.4301

# Approvals

---

Approvals	UL + C-UL - FTTA
-----------	------------------