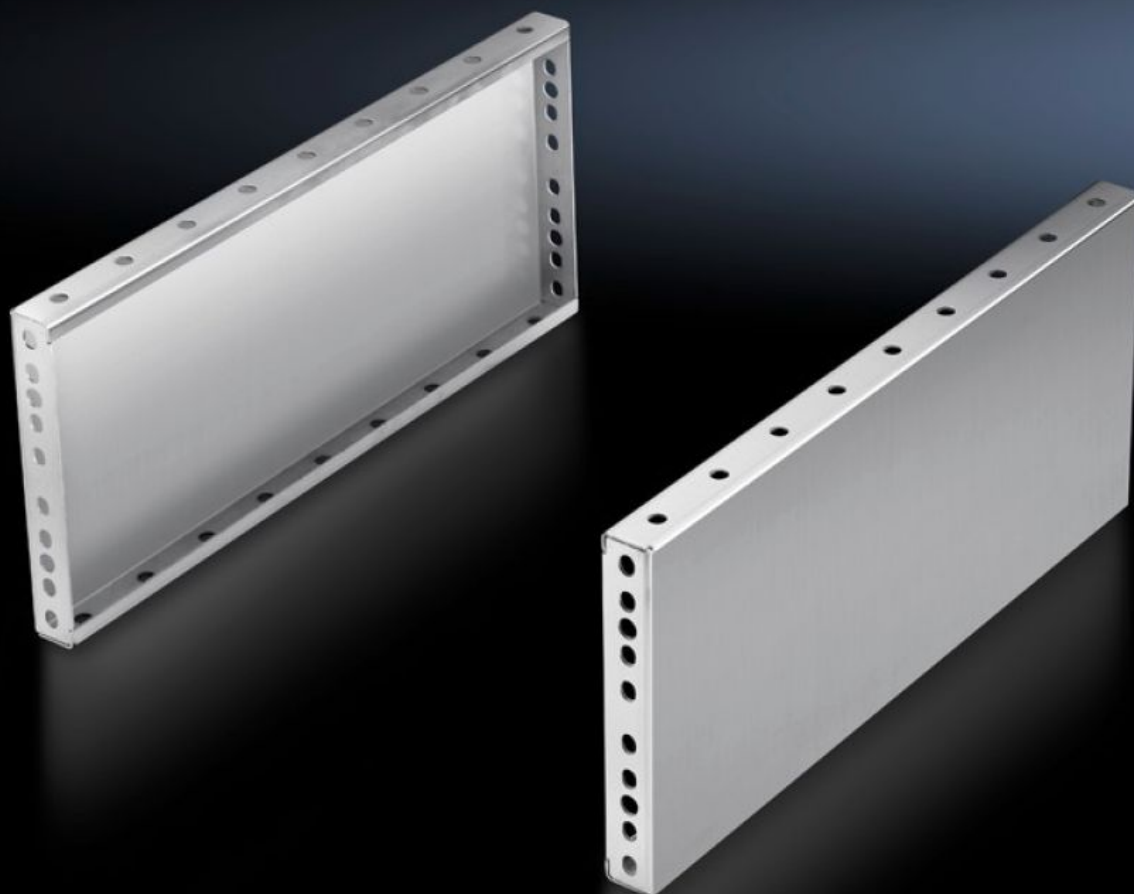
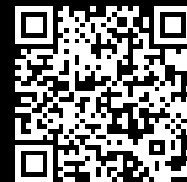


Rittal – The System.

Faster – better – everywhere.



TS 8702.060

Base/plinth trim panels, side, 200 mm

State: 06.09.2025. (Source: [rittal.com/hr-hr](https://www.rittal.com/hr-hr))

ENCLOSURES

POWER DISTRIBUTION

CLIMATE CONTROL

IT INFRASTRUCTURE

SOFTWARE & SERVICES

FRIEDHELM LOH GROUP



TS 8702.060 - Base/plinth trim panels, side, 200 mm

Stainless steel for base/plinth components front and rear

For mounting between the base/plinth components. At 200 mm height, two 100 mm base/plinth trims may be used.

Features

| | |
|-----------------------|--|
| Model No. | TS 8702.060 |
| Product description | For mounting between the base/plinth components. At 200 mm height, two 100 mm base/plinth trims may be used. |
| Material | Stainless steel 1.4301 (AISI 304) |
| Surface finish | Brushed, grain 400 |
| Supply includes | 2 base/plinth trim panels Assembly parts |
| Assembly instruction | Base/plinth trim panels, side, 100 mm, may be installed rotated through 90° to stabilise bayed base/plinth components. The base/plinth baying bracket is required for this purpose |
| Dimensions | Height: 200 mm |
| To fit | Enclosure type: TS: = 600 mm |
| Packs of | 2 pc(s). |
| Net weight | 4.3 |
| Gross weight | 4.5 |
| Customs tariff number | 94039910 |
| EAN | 4028177299993 |
| ETIM 9 | EC000721 |
| ECLASS 8.0 | 27182003 |