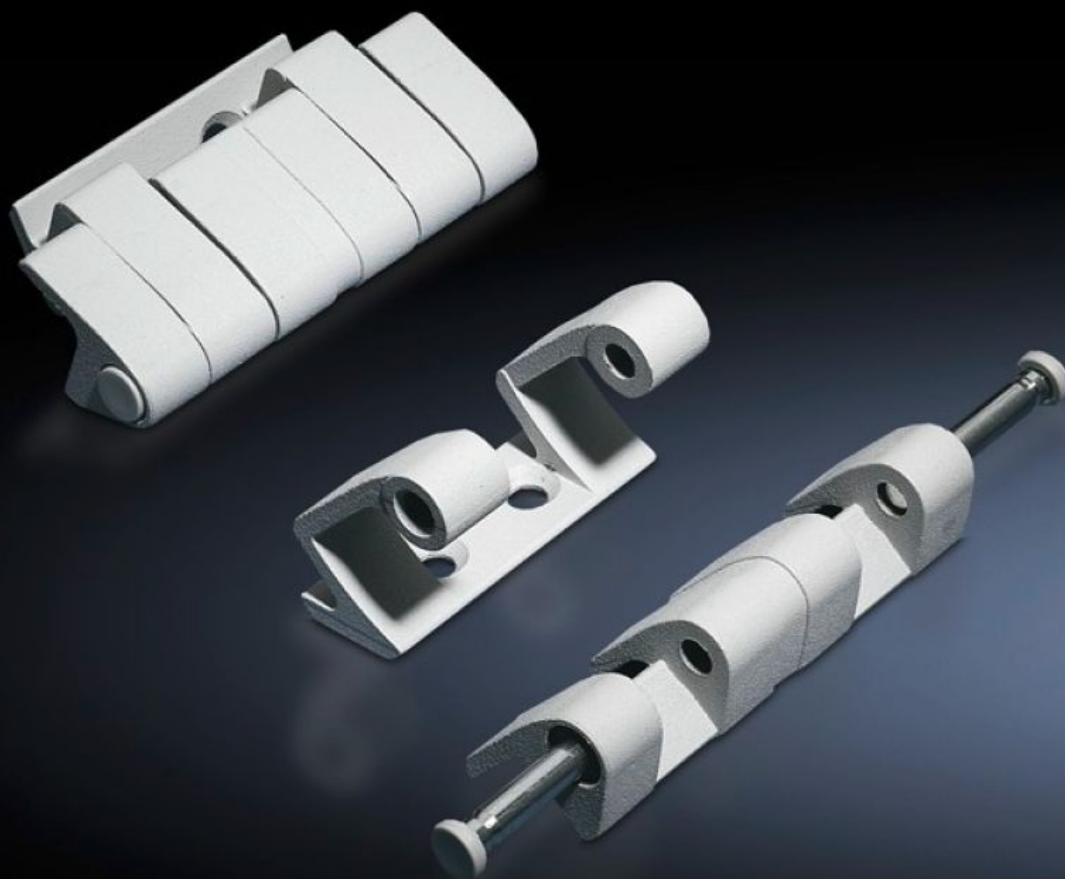


# Rittal – The System.

Faster – better – everywhere.



## SZ 8800.710 180° hinge

State: 02.08.2025. (Source: [rittal.com/hr-hr](https://www.rittal.com/hr-hr))

ENCLOSURES

POWER DISTRIBUTION

CLIMATE CONTROL

IT INFRASTRUCTURE

SOFTWARE & SERVICES

FRIEDHELM LOH GROUP



# SZ 8800.710 - 180° hinge

To extend the door opening angle to 180°

## Features

Model No.	SZ 8800.710
Material	Precision casting/die-cast zinc
Colour	RAL 7035
Supply includes	Assembly parts
Door opening angle	180°
Note	The protection category of the enclosure may be reduced. The doors must be hinged on the same side when enclosures are bayed.
Suitable for door variant	Doors with high dynamic loads, door installations up to 900 N
To fit enclosure type	TS VX SE
Packs of	4 pc(s).
Net weight	0.92
Gross weight	0.977
Customs tariff number	83021000
EAN	4028177595064
ETIM 9	EC001167
ECLASS 8.0	27409219