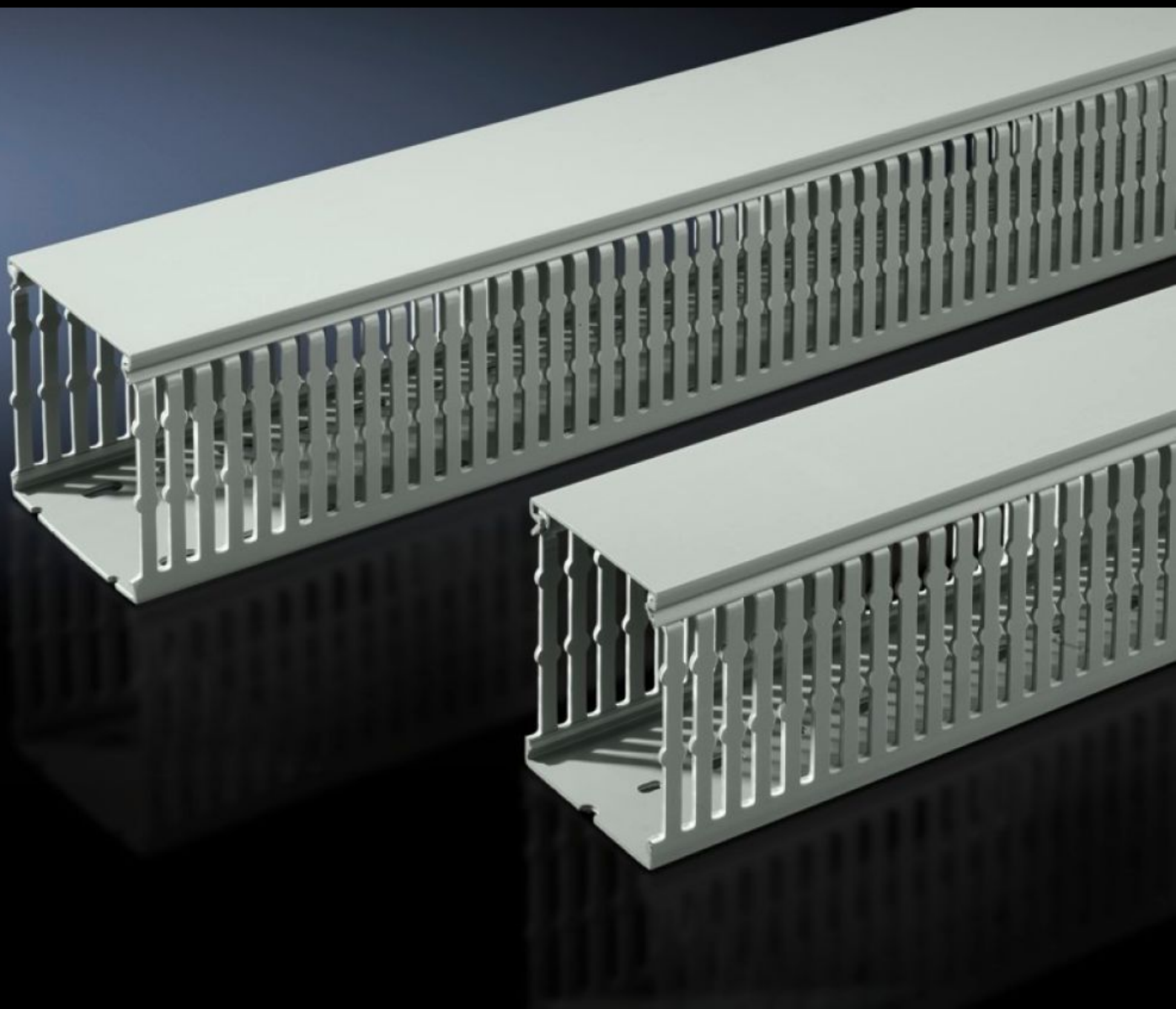


# Rittal – The System.

Faster – better – everywhere.



## TS 8800.750 Cable duct

State: 17.05.2024. (Source: [rittal.com/hr-hr](https://www.rittal.com/hr-hr))

ENCLOSURES

POWER DISTRIBUTION

CLIMATE CONTROL

IT INFRASTRUCTURE

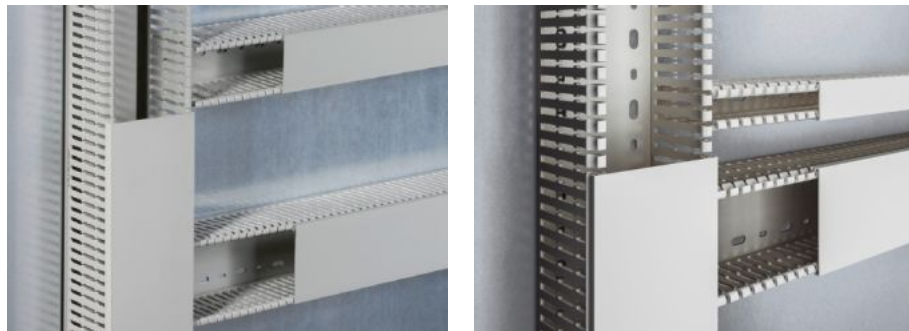
SOFTWARE & SERVICES

FRIEDHELM LOH GROUP



# TS 8800.750 - Cable duct

With special DIN punchings for direct mounting on the enclosure section or on surfaces such as mounting plates. Nominal break points on the bars and on the cable duct base.



## Features

Model No.	TS 8800.750
Design	for mounting plates For mounting on VX system punchings
Product description	With special DIN punchings for direct mounting on the enclosure section or on surfaces such as mounting plates. Nominal break points on the bars and on the cable duct base.
Material	Hard PVC Flame-resistant, self-extinguishing Temperature resistant to +60 °C
Colour	Similar to RAL 7030
Supply includes	Cable duct with cover
Bar width	5,5 mm
Slot width	4,5 mm
Installation options	With special DIN punchings for direct mounting on the enclosure section or on surfaces such as mounting plates If the mounting plate is installed flush with the enclosure frame at the rear (installation position $\pm 0$ mm), the horizontally mounted cable ducts are aligned with the cable ducts mounted on the enclosure section.
Note	Can be shortened for other dimensions.

# Features

Dimensions	Width: 30 mm Depth: 80 mm Length: 2,000 mm
Packs of	24 pc(s).
Weight/pack	22,44 kg
Customs tariff number	39259020
EAN	4028177445444
ETIM 7.0	EC000012
ECLASS 8.0	27400703

# Approvals

Explanations	Declaration of conformity Declaration of conformity UK
--------------	-----------------------------------------------------------