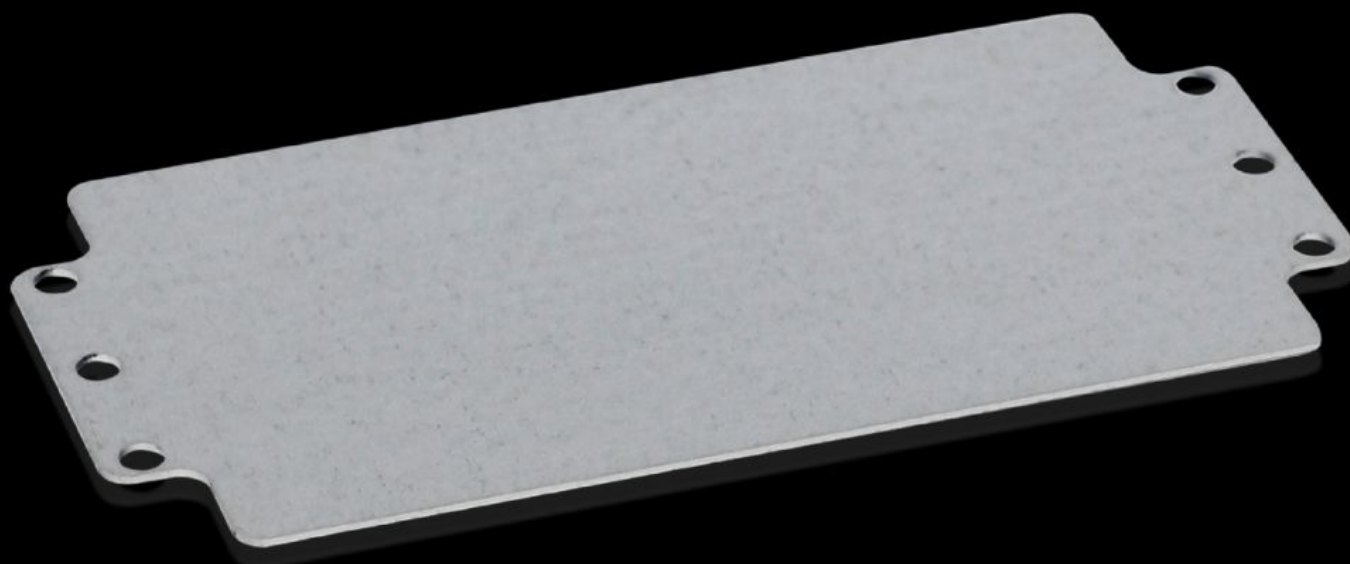
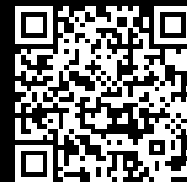


Rittal – The System.

Faster – better – everywhere.



GA 9110.700

Mounting plate

State: 30.08.2025. (Source: [rittal.com/hr-hr](https://www.rittal.com/hr-hr))

ENCLOSURES

POWER DISTRIBUTION

CLIMATE CONTROL

IT INFRASTRUCTURE

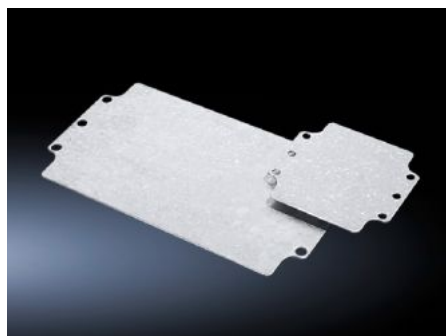
SOFTWARE & SERVICES

FRIEDHELM LOH GROUP



GA 9110.700 - Mounting plate for GA

For individual interior installation, with mounting holes.



Features

| | |
|-----------------------------------|--|
| Model No. | GA 9110.700 |
| Product description | For universal interior installation, with mounting holes. |
| Material | Sheet steel |
| Surface finish | Zinc-plated |
| Dimensions mounting plate (W x H) | 207 mm x 107 mm |
| To fit | Enclosure type: GA Width: = 220 mm Height: = 120 mm |
| Packs of | 2 pc(s). |
| Net weight | 0.45 |
| Gross weight | 0.499 |
| PCF per pack (cradle-to-gate) | 1.7 kg CO2 eq (Cat B) |
| Note on PCF category | Category B: PCF value (cradle-to-gate) based on the product weight, approximately calculated and self-declared |
| Customs tariff number | 94039910 |
| EAN | 4028177154308 |
| ETIM 9 | EC000213 |
| ECLASS 8.0 | 27409216 |