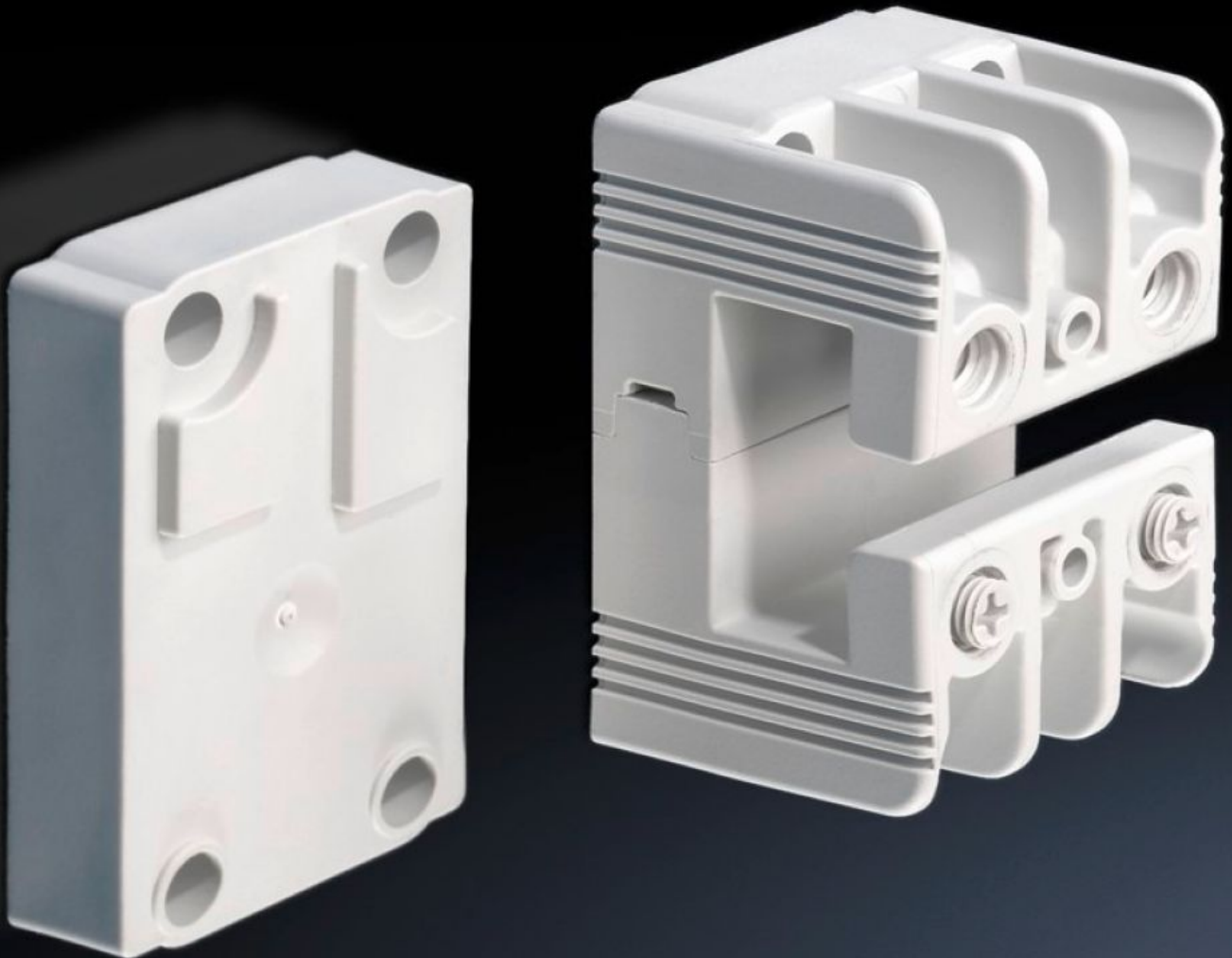


Rittal – The System.

Faster – better – everywhere.



SV 9342.030 Busbar support

State: 22.05.2026. (Source: rittal.com/hr-hr)

ENCLOSURES

POWER DISTRIBUTION

CLIMATE CONTROL

IT INFRASTRUCTURE

SOFTWARE & SERVICES

FRIEDHELM LOH GROUP



SV 9342.030 - Busbar support 1-pole



Features

| | |
|-------------------------|---|
| Model No. | SV 9342.030 |
| Material | Polyamide Fire protection corresponding to UL 94-V0 |
| Colour | RAL 7035 |
| Supply includes | Including raised section for stepped configuration of the PLS busbars |
| To fit busbars | PLS 1600 |
| Number of poles | Single-pole |
| Note | Multi-pole systems with 60 mm bar centre distance may be configured by buying the busbar supports Support suitable for AC and DC applications. |
| Rated operating voltage | 1000 V AC 1500 V DC |
| PEN/N/PE support | Yes |
| Packs of | 4 pc(s). |
| Net weight | 0,28 kg |
| Gross weight | 0,306 kg |
| Customs tariff number | 85469010 |
| ETIM 9 | EC001166 |
| ECLASS 8.0 | 27400607 |

Features

| | |
|---------------------|-------------------------------------|
| Product description | SV Busbar support, PLS 1600, 1-pole |
|---------------------|-------------------------------------|

Approvals

| | |
|-----------|--|
| Approvals | ABS Lloyds Register UL + C-UL (listed) |
|-----------|--|

| | |
|--------------|---------------------------|
| Explanations | Declaration of conformity |
|--------------|---------------------------|

Tender text

PLS 1600 busbar support 1-pole
PLS 1600 busbar support with fastening attachment,
1-pole
Technical specifications
Bar centre distance: 60 mm
E-Cu busbar :PLS 1600
Construction width: 40 mm
Length: 60 mm
Tightening torque
Assembly screw: 3 - 5 Nm
Lid attachment: 0.7 Nm
System
Rittal RiLine60