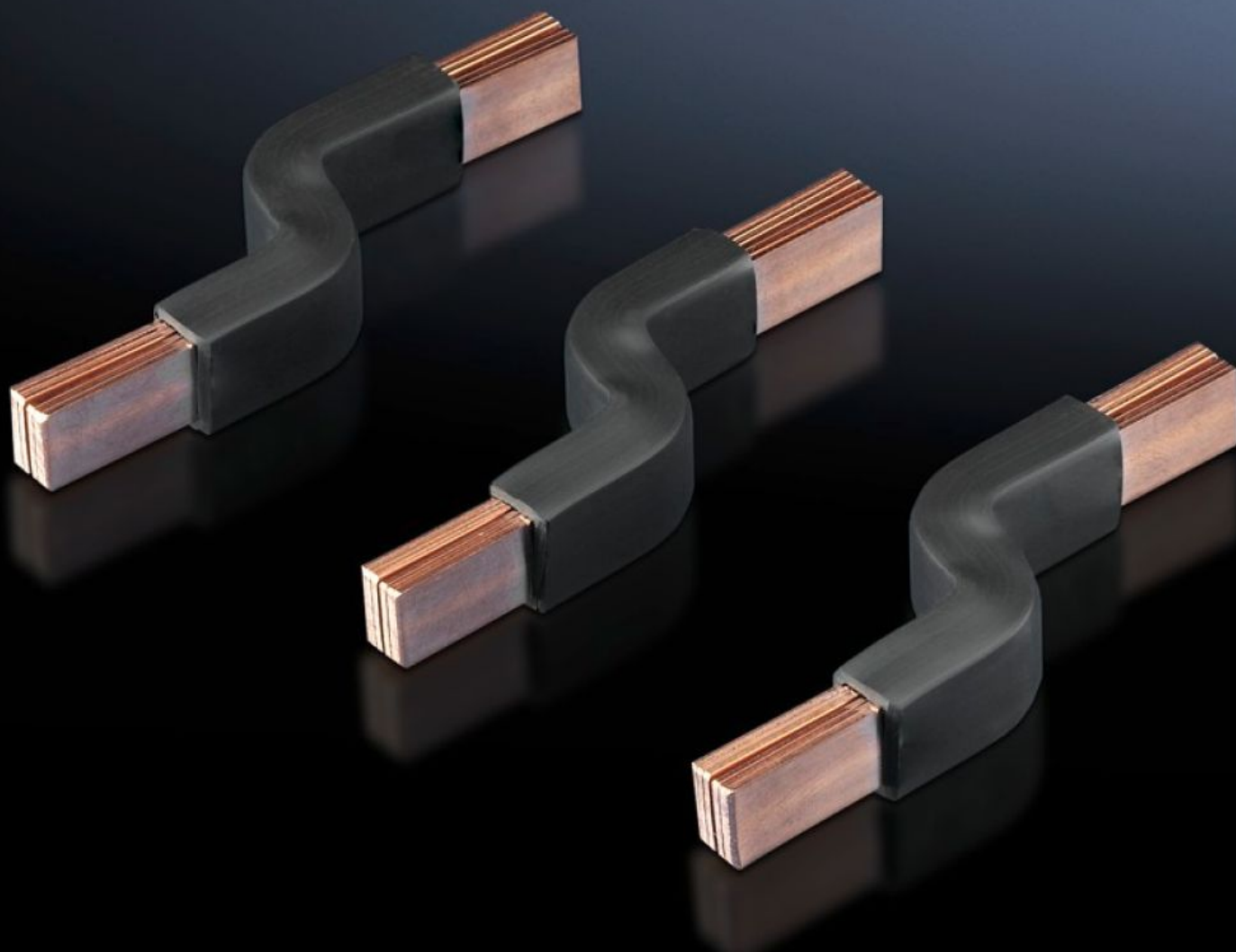


# Rittal – The System.

Faster – better – everywhere.



## SV 9342.570 Connection bracket

State: 18.08.2025. (Source: [rittal.com/hr-hr](https://www.rittal.com/hr-hr))

ENCLOSURES

POWER DISTRIBUTION

CLIMATE CONTROL

IT INFRASTRUCTURE

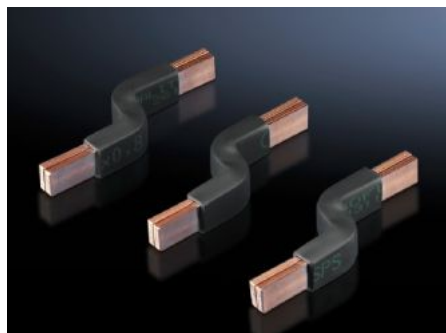
SOFTWARE & SERVICES

FRIEDHELM LOH GROUP



# SV 9342.570 - Connection bracket for circuit-breaker component adaptors

Pre-assembled, laminated flat copper for connecting standard, commercially available circuit-breakers.



## Features

|                                 |   |
|---------------------------------|---|
| Model No.                       | SV 9342.570   |
| Product description             | Pre-assembled, laminated flat copper for connecting standard, commercially available moulded case circuit-breakers (MCCB).                              |
| Material                        | Electrolytic copper F20   |
| Note                            | Universal application for switchgear with a dimensional difference between the mounting level and the upper edge of the contact level of $20 \pm 5$ mm. |
| To fit Model No.                | 9342.500<br>9342.510<br>9342.540<br>9342.550  |
| Version – laminated flat copper | Number of lamina: 6<br>Membrane width: 9 mm<br>Membrane thickness: 0.8 mm   |
| To fit manufacturer (model)     | ABB (T1, T1 UL, T2, T2 UL)<br>Eaton (NZM1, NZM1 UL, BZM B1)<br>Schneider Electric (NSC100, NSE75, NSE100)   |
| Packs of                        | 3 pc(s).  |
| Net weight                      | 0.096   |

# Features

|                              |               |
|------------------------------|---------------|
| Gross weight                 | 0.103         |
| Copper weight (kg per piece) | 0.03          |
| Customs tariff number        | 73182900      |
| EAN                          | 4028177551947 |
| ETIM 9                       | EC002270      |
| ECLASS 8.0                   | 27409221      |

# Approvals

|              |   |
|--------------|---|
| Explanations | Declaration of conformity<br>Declaration of conformity UK |
|--------------|---|