

**Rittal – The System.**

Faster – better – everywhere.



**RX 9365.003**

**RiLineX baying connector**

State: 25.05.2026. (Source: [rittal.com/hr-hr](http://rittal.com/hr-hr))

ENCLOSURES

POWER DISTRIBUTION

CLIMATE CONTROL

IT INFRASTRUCTURE

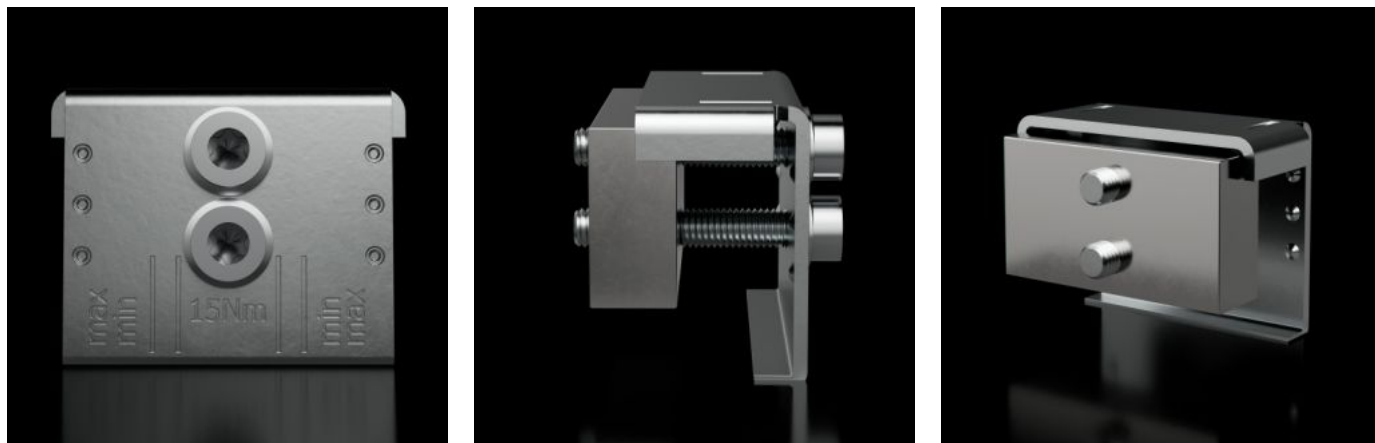
SOFTWARE & SERVICES

FRIEDHELM LOH GROUP



# RX 9365.003 - RiLineX baying connector for busbars

Short busbar connector for the baying set, for connecting modular RiLineX boards. The 3-pole baying set (9360103) is additionally required.



## Features

Model No.	RX 9365.003
Material	Upper part: Sheet steel, zinc-plated Contact plate: E-Cu, tin-plated
Rated current (max.)	800 A
Dimensions	Width: 45 mm
To fit busbars	15 x 5/10 20 x 5/10 30 x 5/10
Packs of	3 pc(s).
Net weight	0,564 kg
Gross weight	0,572 kg
Copper weight (kg per piece)	0,339
PCF per pack (cradle-to-gate)	3.15
Customs tariff number	73269098
ETIM 9	EC002622

# Features

---

Product description	Short busbar connector for the baying set, for connecting modular RiLineX boards. The 3-pole baying set (9360103) is additionally required. For E-Cu 15x5-30x10 mm, L: 45 mm
---------------------	--

# Approvals

---

Approvals	UL + C-UL (listed)
Explanations	Declaration of conformity PCF-declaration

# Tender text

## RiLineX Anreihverbinder für Sammelschienen (kurz)

Short busbar connector for the baying set,  
for connecting modular RiLineX boards.  
The baying set (9360103) is additionally required.  
For voltages up to 1000 V AC and 1500 V DC.  
Tested short-circuit resistance up to 65 kA.  
IEC and UL approved.

### Product information

Number of poles: 3

Busbar dimensions: 15/20/30 mm x 5/10 mm

Rated current max.: 550/800 A

Manufacturer: Rittal GmbH & Co. KG

Type: 9365003