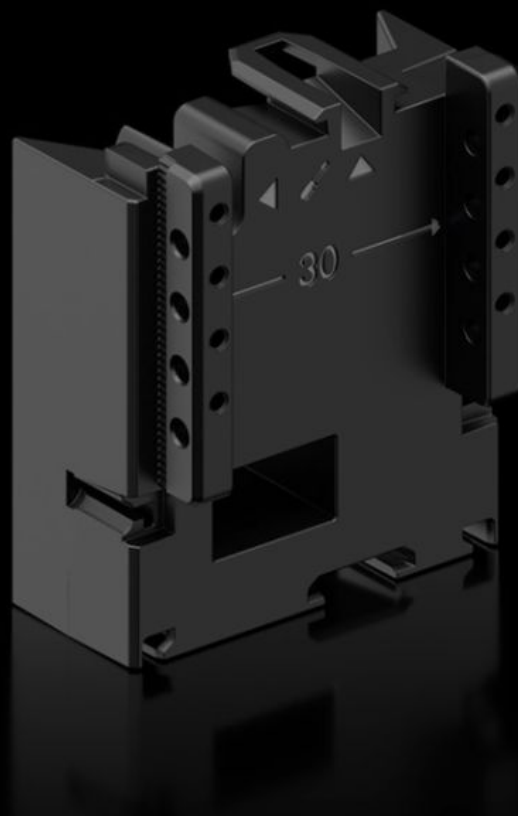
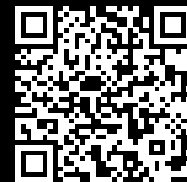


# Rittal – The System.

Faster – better – everywhere.



## RX 9365.751 RiLineX expansion block

State: 17.08.2025. (Source: [rittal.com/hr-hr](https://www.rittal.com/hr-hr))

ENCLOSURES

POWER DISTRIBUTION

CLIMATE CONTROL

IT INFRASTRUCTURE

SOFTWARE & SERVICES

FRIEDHELM LOH GROUP



# RX 9365.751 - RiLineX expansion block for component adaptors and component supports

RiLineX extension block, width 54 mm, to extend the component adaptor by 60 mm for busbar systems.



## Features

Model No.	RX 9365.751
Material	Polyamide (PA 6) Fire protection corresponding to UL 94
Colour	RAL 9005
To fit Model No.	9360.740 9360.760 9360.780 9360.707
Dimensions	Width: 54 mm Height: 60 mm
Packs of	8 pc(s).
Net weight	0.248
Gross weight	0.279
Customs tariff number	39269097
ETIM 9	EC002270

# Approvals

---

Explanations

Declaration of conformity