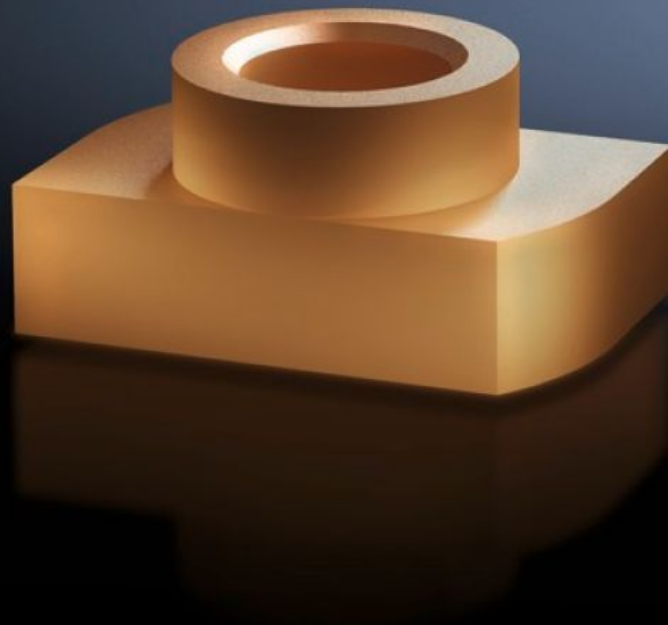


Rittal – The System.

Faster – better – everywhere.



SV 9650.905

Sliding nut

State: 02.08.2025. (Source: [rittal.com/hr-hr](https://www.rittal.com/hr-hr))

ENCLOSURES

POWER DISTRIBUTION

CLIMATE CONTROL

IT INFRASTRUCTURE

SOFTWARE & SERVICES

FRIEDHELM LOH GROUP



SV 9650.905 - Sliding nut for Maxi-PLS busbars

May be retro-fitted by sliding into the Maxi-PLS busbar section.

Features

| | |
|-----------------------|--|
| Model No. | SV 9650.905 |
| Product description | For attaching flat copper bars and connection components to Maxi-PLS busbars. For sliding into the busbar section retrospectively and tightening the threaded bolts. |
| Material | E-Cu |
| To fit busbars | Maxi-PLS 60 |
| Dimensions | Thread: M8 |
| Packs of | 3 pc(s). |
| Net weight | 0.069 |
| Gross weight | 0.075 |
| Customs tariff number | 74198090 |
| EAN | 4028177662810 |
| ETIM 9 | EC000096 |
| ECLASS 8.0 | 23110804 |