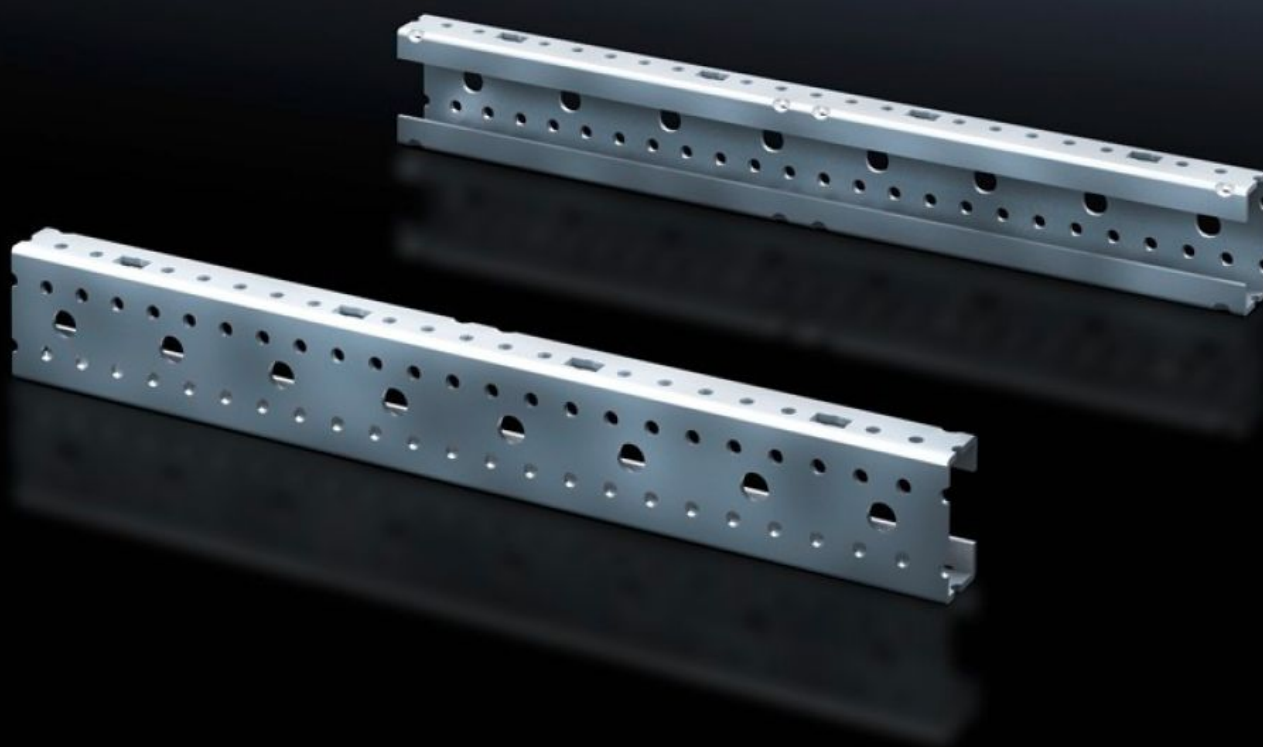


Rittal – The System.

Faster – better – everywhere.



SV 9666.702 Mounting angles ISV

State: 28.08.2025. (Source: [rittal.com/hr-hr](https://www.rittal.com/hr-hr))

ENCLOSURES

POWER DISTRIBUTION

CLIMATE CONTROL

IT INFRASTRUCTURE

SOFTWARE & SERVICES

FRIEDHELM LOH GROUP



SV 9666.702 - Mounting angles ISV for VX

For vertical sub-division of the support frame in the VX/TS/SE enclosure.

Features

Model No.	SV 9666.702
Product description	For vertical sub-division of the support frame in the enclosure.
Material	Sheet steel
Surface finish	Zinc-plated
Dimensions	Height: 300 mm
Size	Height units (U) @ 150 mm: 2
Packs of	2 pc(s).
Net weight	0.7
Gross weight	0.703
PCF per pack (cradle-to-gate)	2.7 kg CO2 eq (Cat B)
Note on PCF category	Category B: PCF value (cradle-to-gate) based on the product weight, approximately calculated and self-declared
Customs tariff number	39269097
EAN	4028177676589
ETIM 9	EC002270
ECLASS 8.0	27400613