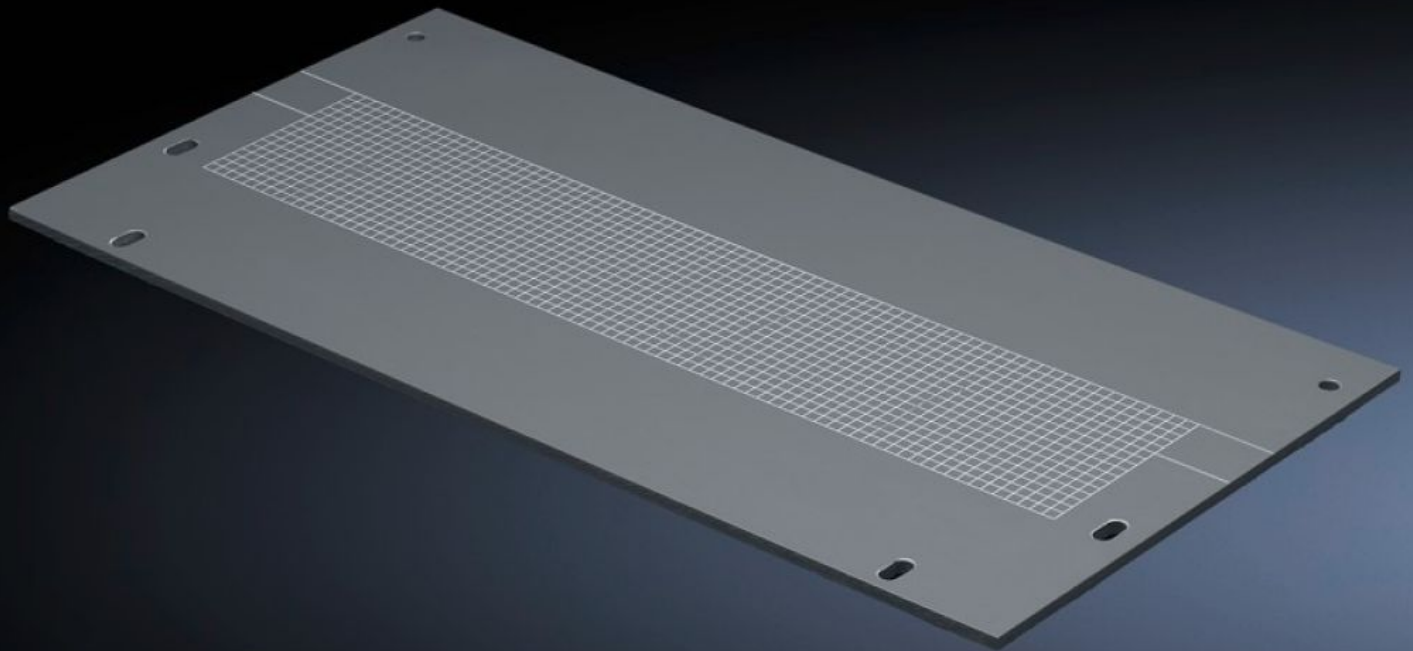


Rittal – The System.

Faster – better – everywhere.



SV 9673.508

Gland plate

State: 06.04.2026. (Source: [rittal.com/hr-hr](https://www.rittal.com/hr-hr))

ENCLOSURES

POWER DISTRIBUTION

CLIMATE CONTROL

IT INFRASTRUCTURE

SOFTWARE & SERVICES

FRIEDHELM LOH GROUP



SV 9673.508 - Gland plate for compartment divider with duct

To shroud the opening for vertical busbar systems.



Features

Model No.	SV 9673.508
Product description	To shroud the opening for vertical busbar systems.
Material	ABS PMMA
Dimensions	Width: 650 mm Height: 223.5 mm
To fit	Width: = 800 mm
Packs of	4 pc(s).
Net weight	2,576 kg
Customs tariff number	73079100
ETIM 9	EC002525
ECLASS 8.0	27400613
Product description	SV Gland plate, WH: 650x223,5 mm, for compartment divider with duct, for TS (W: 800 mm)