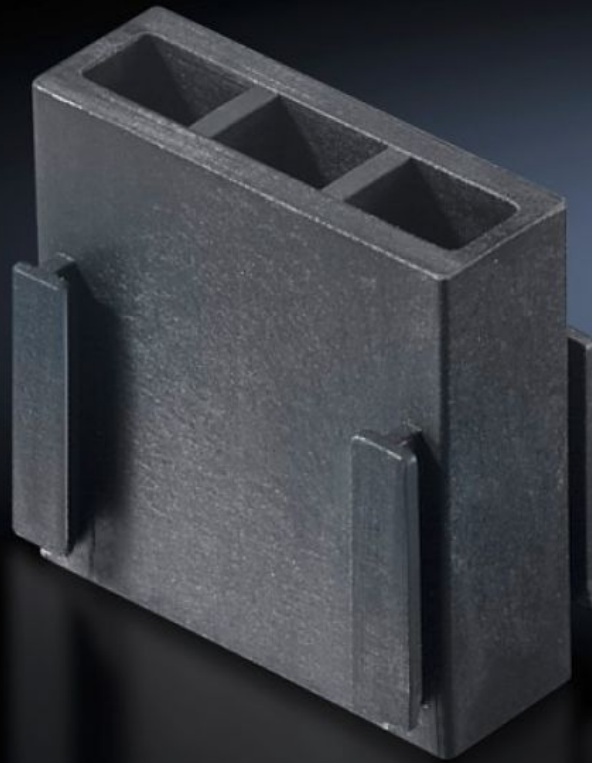


# Rittal – The System.

Faster – better – everywhere.



## SV 9676.008 Filler pieces

State: 11.05.2026. (Source: [rittal.com/hr-hr](http://rittal.com/hr-hr))

ENCLOSURES

POWER DISTRIBUTION

CLIMATE CONTROL

IT INFRASTRUCTURE

SOFTWARE & SERVICES

FRIEDHELM LOH GROUP



# SV 9676.008 - Filler pieces

Vacant bar slots can be closed using the filler pieces.

## Features

---

Model No.	SV 9676.008
Position of the bar system in the functional space	2 3
Note	When using only 1, 2 or 3 bars, the vacant bar slots should be closed using the filler pieces
To fit busbar system	Flat-PLS 60 Flat-PLS 100
Packs of	16 pc(s).
Net weight	0,112 kg
Gross weight	0,135 kg
Customs tariff number	39239000
ETIM 9	EC001900
ECLASS 8.0	27400613
Product description	SV Filler piece, SV 9676002/004/020/21

## Approvals

---

Approvals	ABS DNV Lloyds Register
-----------	-------------------------------