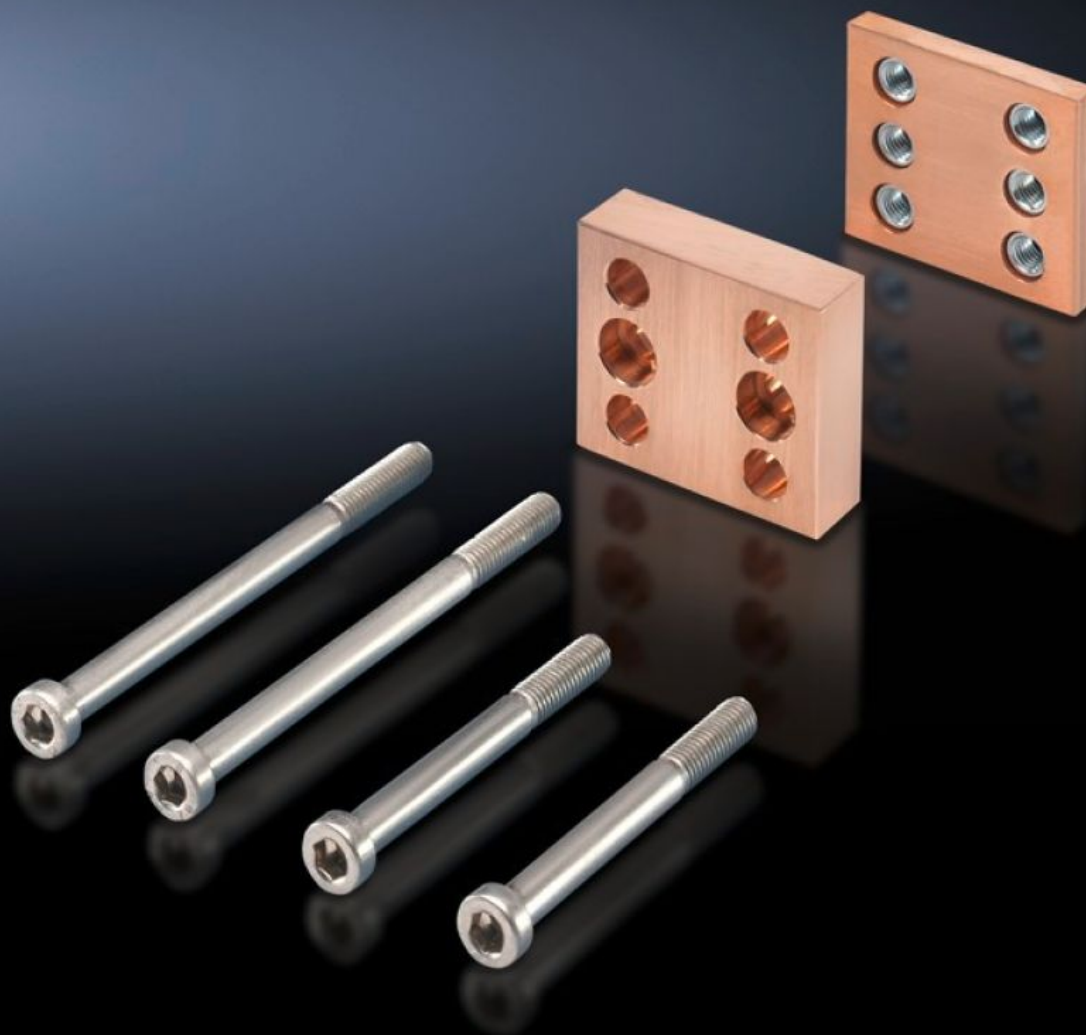
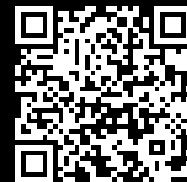


# Rittal – The System.

Faster – better – everywhere.



## SV 9676.546 Contact piece

State: 02.08.2025. (Source: [rittal.com/hr-hr](https://www.rittal.com/hr-hr))

ENCLOSURES

POWER DISTRIBUTION

CLIMATE CONTROL

IT INFRASTRUCTURE

SOFTWARE & SERVICES

FRIEDHELM LOH GROUP



# SV 9676.546 - Contact piece for connection brackets

For connecting connection brackets and connector kits of flat copper bars to Flat-PLS busbar systems, no drilling required.



## Features

Model No.	SV 9676.546
Product description	For joining connection brackets to busbar systems.
Material	E-Cu
Supply includes	Assembly parts
For Busbar width	60 mm
Number of bars per conductor	3 4
Note	<p>The screws included with the supply are used to secure the contact pieces to the busbars</p> <p>Screws for attaching the connection brackets are not included with the supply</p> <p>The required screw length must be selected in line with the busbar width W, i.e. <math>\text{length} = W + \text{fastening measurement} + (\text{number of sub-conductors} \times 10)</math></p> <p>No. of screws per bracket: With 2 sub-conductors per conductor: 2 pc(s). and with 3 or 4 sub-conductors per conductor: 4 pc(s).</p>
To fit busbar system	Flat-PLS
Mounting dimensions	40 mm
Packs of	1 pc(s).
Net weight	1.15

# Features

Gross weight	1.254
Copper weight (kg per piece)	0.93
Customs tariff number	74198090
EAN	4028177602779
ETIM 9	EC001900
ECLASS 8.0	27400613

# Approvals

Explanations	Declaration of conformity Declaration of conformity UK
--------------	---