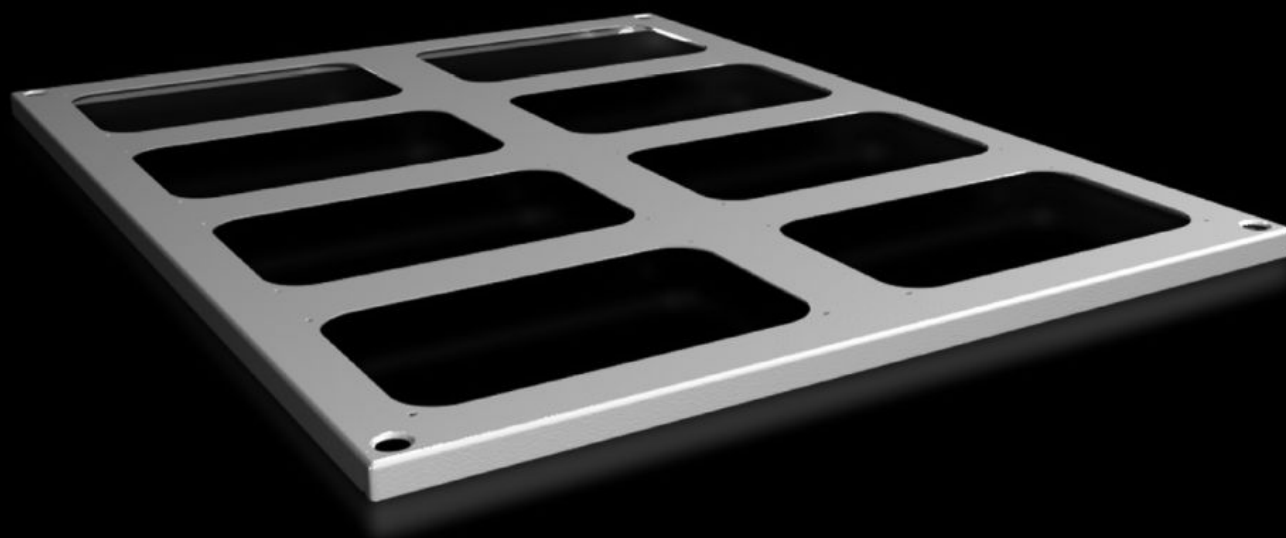
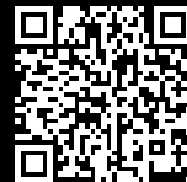


Rittal – The System.

Faster – better – everywhere.



SV 9681.568

Roof plate for cable entry glands

State: 14.08.2025. (Source: [rittal.com/hr-hr](https://www.rittal.com/hr-hr))

ENCLOSURES

POWER DISTRIBUTION

CLIMATE CONTROL

IT INFRASTRUCTURE

SOFTWARE & SERVICES

FRIEDHELM LOH GROUP



SV 9681.568 - Roof plate for cable entry glands for VX, VX IT

For enclosures without roof plate and in exchange for the standard roof in other enclosures.

Features

| | |
|---------------------------------------|--|
| Model No. | SV 9681.568 |
| Product description | For enclosures without roof plate and in exchange for the standard roof. |
| Material | Sheet steel, 1.5 mm |
| Surface finish | Textured paint |
| Colour | RAL 7035 |
| Supply includes | Assembly parts |
| Number of required cable entry glands | 8 |
| To fit | Width: = 600 mm Depth: = 800 mm |
| Packs of | 1 pc(s). |
| Net weight | 3.58 |
| Gross weight | 3.98 |
| PCF per pack (cradle-to-gate) | 15.2 kg CO2 eq (Cat B) |
| Note on PCF category | Category B: PCF value (cradle-to-gate) based on the product weight, approximately calculated and self-declared |
| Customs tariff number | 94039910 |
| EAN | 4028177926554 |
| ETIM 9 | EC000744 |
| ECLASS 8.0 | 27182405 |

Approvals

Explanations

Declaration of conformity

Declaration of conformity UK