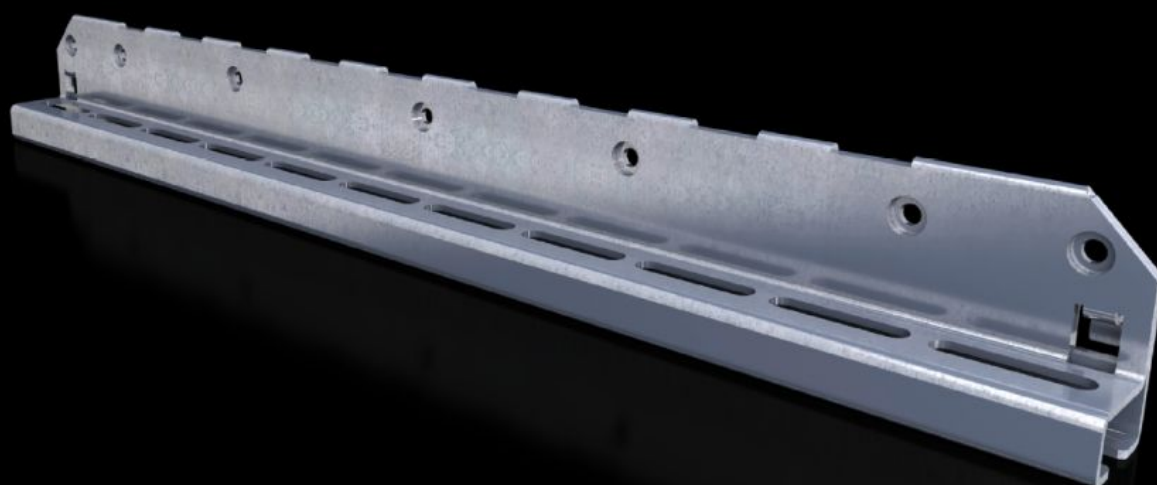


Rittal – The System.

Faster – better – everywhere.



SV 9683.326 Mounting bracket

State: 14.08.2025. (Source: [rittal.com/hr-hr](https://www.rittal.com/hr-hr))

ENCLOSURES

POWER DISTRIBUTION

CLIMATE CONTROL

IT INFRASTRUCTURE

SOFTWARE & SERVICES

FRIEDHELM LOH GROUP



SV 9683.326 - Mounting bracket for air circuit-breaker support rail

For attaching the air circuit-breaker support rail.

Features

Model No.	SV 9683.326
Product description	For attaching the air circuit-breaker support rail to the enclosure section or compartment side panel.
Material	Sheet steel, 2.5 mm
Surface finish	Zinc-plated
Supply includes	Assembly parts
To fit	Depth: = 600 mm
Packs of	2 pc(s).
Net weight	3.4
Gross weight	3.646
PCF per pack (cradle-to-gate)	14 kg CO2 eq (Cat B)
Note on PCF category	Category B: PCF value (cradle-to-gate) based on the product weight, approximately calculated and self-declared
Customs tariff number	73182900
EAN	4028177937512
ETIM 9	EC002270
ECLASS 8.0	27400613

Approvals

Explanations	Declaration of conformity UK
--------------	------------------------------