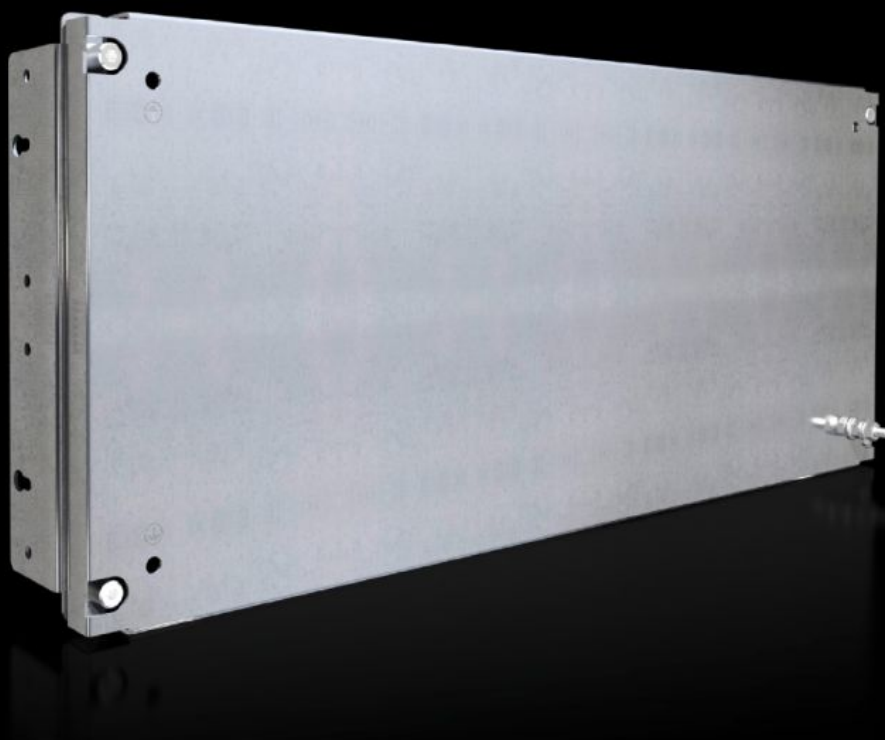


Rittal – The System.

Faster – better – everywhere.



SV 9683.683

Partial mounting plate

State: 20.07.2025. (Source: [rittal.com/hr-hr](https://www.rittal.com/hr-hr))

ENCLOSURES

POWER DISTRIBUTION

CLIMATE CONTROL

IT INFRASTRUCTURE

SOFTWARE & SERVICES

FRIEDHELM LOH GROUP



SV 9683.683 - Partial mounting plate for compartment side panel

With or without duct, for direct attachment to the functional space side panel.

Features

Model No.	SV 9683.683
Design	solid
Product description	For direct attachment to the compartment side panel for internal compartmentalisation. Universal interior installation with switchgear and controlgear. Creation of additional mounting levels. In combination with compartment dividers and side panel, internal compartmentalisation in accordance with Form 1 to 4 is possible.
Material	Sheet steel, 2 mm
Surface finish	Zinc-plated
Supply includes	Angle brackets and assembly parts
For compartment height	300 mm
Dimensions	Width: 702 mm Height: 293 mm
To fit	Width: = 800 mm
Packs of	1 pc(s).
Net weight	4.2
Gross weight	4.96
PCF per pack (cradle-to-gate)	19.1 kg CO2 eq (Cat B)
Note on PCF category	Category B: PCF value (cradle-to-gate) based on the product weight, approximately calculated and self-declared
Customs tariff number	73269098
EAN	4028177935181
ETIM 9	EC000213

Features

ECLASS 8.0	27400613
------------	----------

Approvals

Explanations	Declaration of conformity UK
--------------	------------------------------