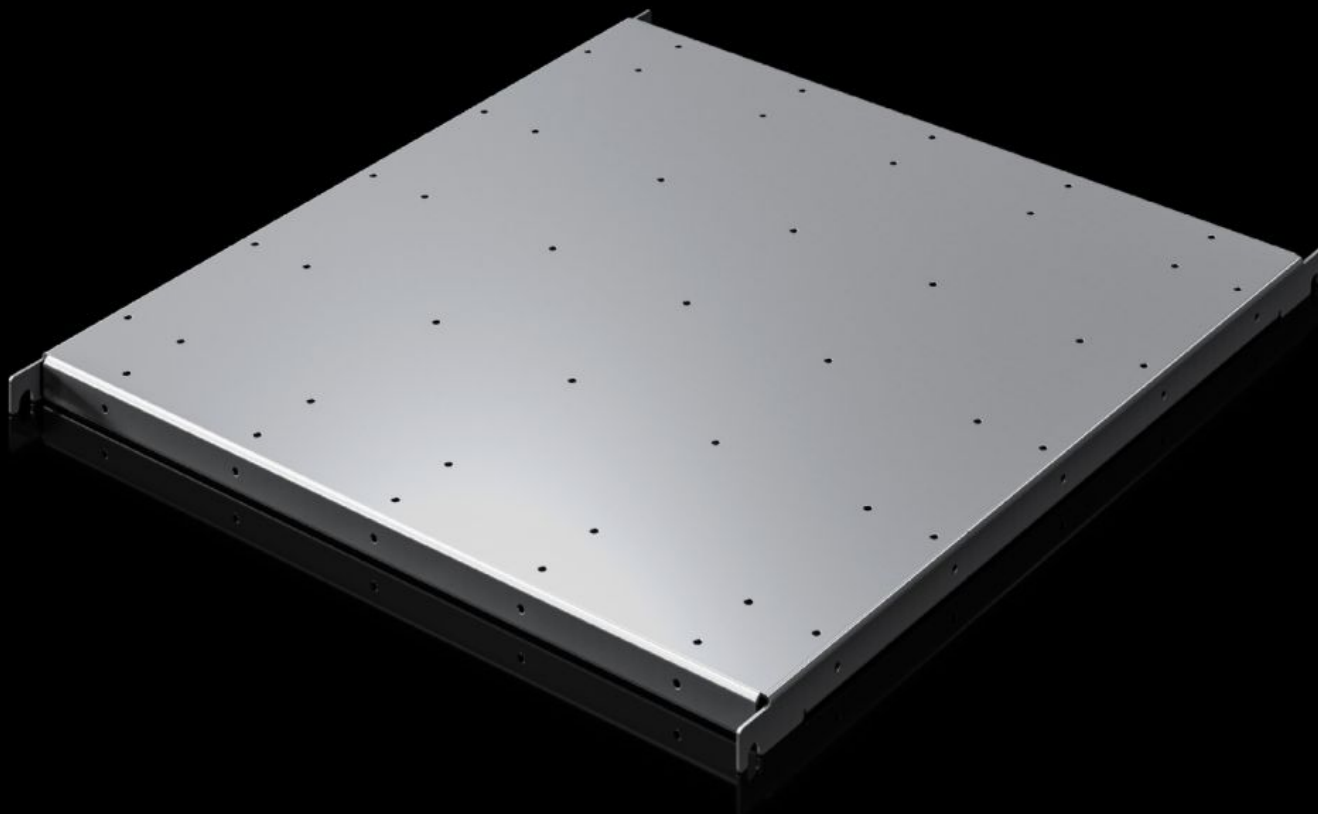


Rittal – The System.

Faster – better – everywhere.



SV 9692.021

Component shelf, heavy duty

State: 06.09.2025. (Source: [rittal.com/hr-hr](https://www.rittal.com/hr-hr))

ENCLOSURES

POWER DISTRIBUTION

CLIMATE CONTROL

IT INFRASTRUCTURE

SOFTWARE & SERVICES

FRIEDHELM LOH GROUP



SV 9692.021 - Component shelf, heavy duty VX ESS

To attach e.g. monobloc batteries.

Features

Model No.	SV 9692.021
Material	Sheet steel, zinc-plated
Supply includes	Assembly parts
Load capacity static	200 kg 2.000 N
Support area	Width: 509 mm Depth: 714 mm
To fit	Width: 600 mm Depth: 800 mm
Packs of	1 pc(s).
Net weight	9.1
Gross weight	9.34
PCF per pack (cradle-to-gate)	24.08 kg CO2 eq (Cat B)
Note on PCF category	Category B: PCF value (cradle-to-gate) based on the product weight, approximately calculated and self-declared
Customs tariff number	94039910
EAN	4028177045965