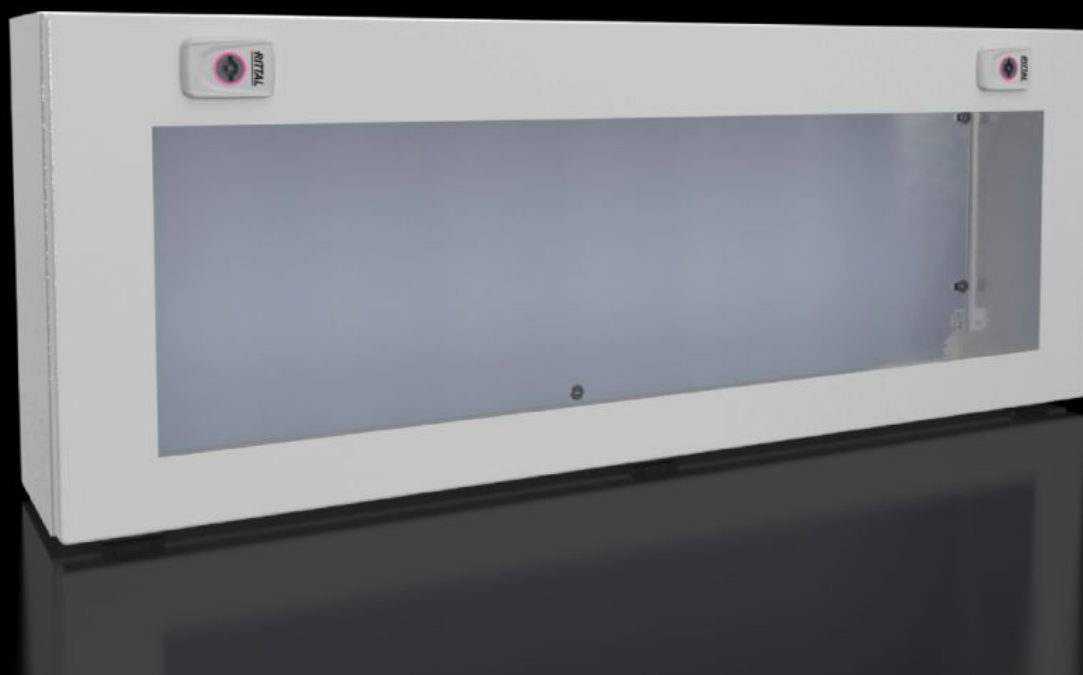


Rittal – The System.

Faster – better – everywhere.



KX 1613.100

Bus enclosures KX, sheet steel, with double-bit insert

State: 18/07/2025 (Source: rittal.com/ie-en)

ENCLOSURES

POWER DISTRIBUTION

CLIMATE CONTROL

IT INFRASTRUCTURE

SOFTWARE & SERVICES

FRIEDHELM LOH GROUP



KX 1613.100 - Bus enclosures KX, sheet steel, with double-bit insert

Wall-mounted enclosure made from sheet steel, with cover and viewing panel. Protection category IP 65/NEMA 12. For installing most brands of bus modules and sensors.



Features

Model No.	KX 1613.100
Design	with viewing window
Material	Enclosure: Sheet steel Cover: Sheet steel, all-round foamed-in PU seal Viewing window: Polycarbonate, 4 mm Mounting plate: Sheet steel, zinc-plated
Surface finish	Enclosure and cover: Dipcoat primed, powder-coated on the outside, textured paint
Colour	RAL 7035
Supply includes	Enclosure with hinged cover Viewing window in cover Mounting plate Cam lock with 3 mm double-bit insert
Protection category NEMA	NEMA 1 NEMA 12
Protection category to IEC 60 529	IP 65

Features

Type rating to UL 50E	Type 1 Type 12
IK Code	IK08
Dimensions	Width: 800 mm Height: 300 mm Depth: 155 mm
Material thickness - cover	1.25 mm
Material thickness - enclosure	1.25 mm
Material thickness of mounting plate	2 mm
Basic material	Sheet steel
Packs of	1 pc(s).
Net weight	12
Gross weight	12.111
PCF per pack (cradle-to-gate)	40.9 kg CO2 eq (Cat B)
Note on PCF category	Category B: PCF value (cradle-to-gate) based on the product weight, approximately calculated and self-declared
Customs tariff number	94032080
EAN	4028177970038
ETIM 9	EC000261
ETIM 8	EC000261
ECLASS 8.0	27180101

Approvals

Approvals	C-UL
-----------	------

Tender text

Enclosure (bus enclosure)

Enclosure with cover:

Stable sheet steel design,
body folded from a single piece and welded,
with protection channel all-round cover opening,
rear panel with eyelets for wall mounting bracket,
lid hinged at bottom, with viewing window,
with all-round foamed-in PU seal,
with PE conductor connection in the enclosure
and via U-shaped bracket in the cover,
for quick and easy earthing,
with cam lock and double bid insert,
with mounting plate.

QR code:

QR code printed on body, cover, mounting plate and
type plate for clear identification and easy retrieval of relevant
product information and documentation,
and for clear traceability of the individual parts.

Accessories: lock inserts, type A,
top hat rail, wall mounting bracket,
modular cable entry.

Material:

Enclosure, cover: Sheet steel

Viewing window: Polycarbonate

Mounting plate: sheet steel

Enclosure and cover surface finish:

Triple surface treatment for optimum protection
against corrosion and resistance to mineral oils,
lubricants, machining emulsions and solvents:
Nanoceramic coating, electrophoretic dipcoat priming
Powder-coated on the outside in textured RAL 7035.

Mounting plate: zinc-plated

Protection category to IEC 60 529: IP 65

Protection category to UL 508A: Type 12

Dimensions (W x H x D): 800x300x155 mm