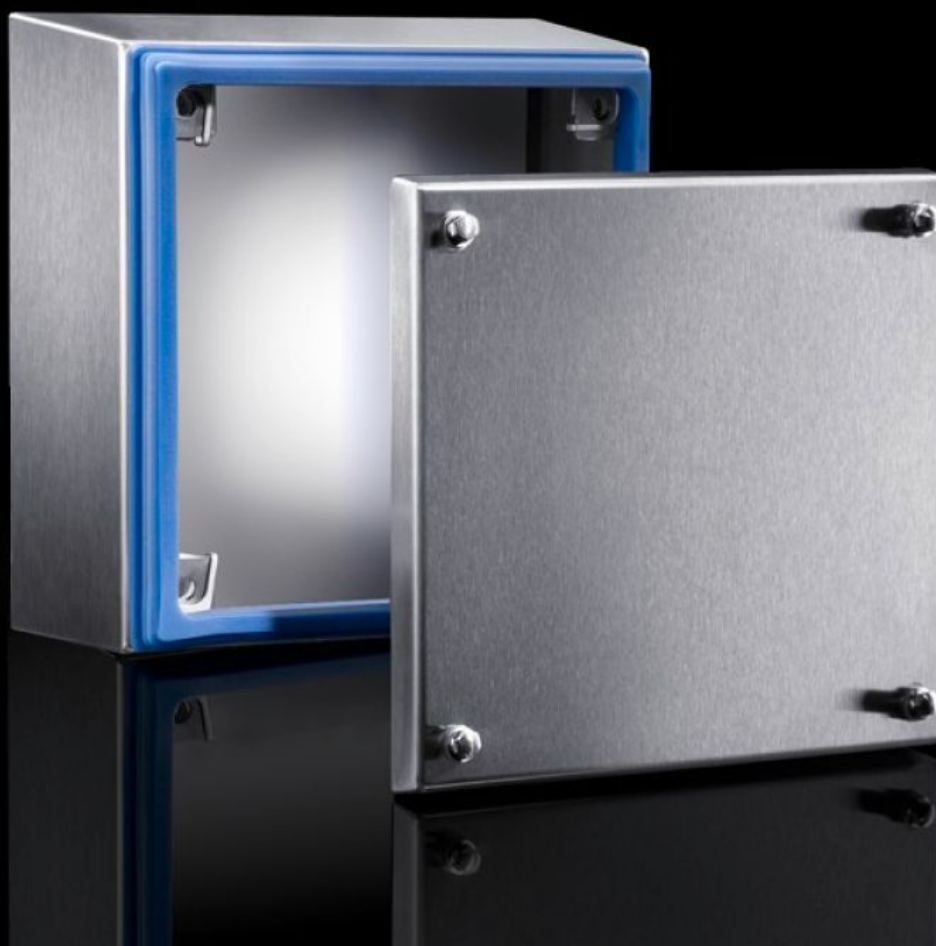
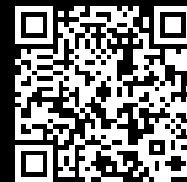


Rittal – The System.

Faster – better – everywhere.



HD 1670.600 Terminal box HD

State: 22/08/2025 (Source: [rittal.com/ie-en](https://www.rittal.com/ie-en))

ENCLOSURES

POWER DISTRIBUTION

CLIMATE CONTROL

IT INFRASTRUCTURE

SOFTWARE & SERVICES

FRIEDHELM LOH GROUP



HD 1670.600 - Terminal box HD

Enclosure solution tailored to the requirements of the food and beverage industry. All-round gap-free silicone seal between enclosure and cover. Hygiene-compliant quick-release hexagon fastener



Features

| | |
|-----------------|--|
| Model No. | HD 1670.600 |
| Design | Hygienic Design enclosure |
| Material | Enclosure and cover: Stainless steel 1.4301 (AISI 304) 1.5 mm Mounting bracket: Sheet steel, zinc-plated, passivated, 2.0 mm Screw plug: Stainless steel Seal: Silicone, compliant with FDA Guideline 21 CFR 177.2600 |
| Surface finish | Enclosure and cover: Brushed, grain 400, peak-to-valley height < 0.8 µm Seal: Blue, dyed (RAL 5010) |
| Supply includes | Enclosure of all-round solid construction Cover Mounting bracket (pre-assembled) Seal and screw plug (supplied loose) |
| Dimensions | Width front: 150 mm Width (rear): 172 mm Height, front: 150 mm Height rear: 172 mm Depth: 80 mm |
| IK Code | IK08 |

Features

| | |
|-------------------------------------|--|
| Basic material | Stainless steel 1.4301 (AISI 304) |
| IP protection category to IEC 60529 | IP 66 IP X9 |
| Protection category NEMA | NEMA 1 NEMA 3 NEMA 3X NEMA 4 NEMA 4X NEMA 12 NEMA 13 |
| Type rating to UL 50E | Type 1 Type 3 Type 3X Type 4 Type 4X Type 12 Type 13 |
| Packs of | 1 pc(s). |
| Net weight | 1.6 |
| Gross weight | 1.72 |
| Customs tariff number | 94032080 |
| EAN | 4028177639737 |
| E-Number Sweden | E3465100 |
| ETIM 9 | EC002713 |
| ETIM 8 | EC002713 |
| ECLASS 8.0 | 27180101 |

Approvals

| | |
|-----------|--------------------|
| Approvals | UL + C-UL (listed) |
|-----------|--------------------|

Approvals

Explanations

Declaration of conformity

Declaration of conformity UK