

# Rittal – The System.

Faster – better – everywhere.



## HD 1684.630 Switch housing HD

State: 17/08/2025 (Source: [rittal.com/ie-en](http://rittal.com/ie-en))

ENCLOSURES

POWER DISTRIBUTION

CLIMATE CONTROL

IT INFRASTRUCTURE

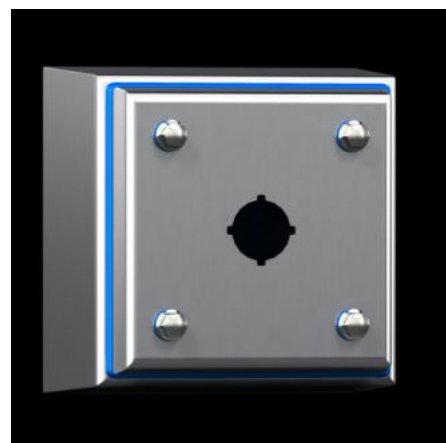
SOFTWARE & SERVICES

FRIEDHELM LOH GROUP



# HD 1684.630 - Switch housing HD

Enclosure solution with cut-outs for switches, tailored to the requirements of the food and beverage industry. All-round gap-free silicone seal between enclosure and cover. Hygiene-compliant quick-release hexagon fastener.



## Features

Model No.	HD 1684.630
Design	Hygienic Design enclosure
Material	Enclosure and cover: Stainless steel 1.4301 (AISI 304) 1.5 mm Screw plug: Stainless steel Seal: Silicone, compliant with FDA Guideline 21 CFR 177.2600
Surface finish	Enclosure and cover: Brushed, grain 400, peak-to-valley height < 0.8 µm Seal: Blue, dyed (RAL 5010)
Supply includes	Enclosure of all-round solid construction Cover with switch cut-out Seal and screw plug (supplied loose)
Dimensions	Width front: 100 mm Width (rear): 122 mm Height, front: 280 mm Height rear: 302 mm Depth: 90 mm
Pitch pattern	60 mm
Cut-outs (quantity x diameter)	4 x 30.5 mm

# Features

IK Code	IK08
Basic material	Stainless steel 1.4301 (AISI 304)
Lock	Lock version: Hygiene-compliant quick-release hexagon fastener Number of locks: 4
IP protection category to IEC 60529	IP 66 IP X9
Protection category NEMA	NEMA 1 NEMA 3 NEMA 3X NEMA 4 NEMA 4X NEMA 12 NEMA 13
Type rating to UL 50E	Type 1 Type 3 Type 3X Type 4 Type 4X Type 12 Type 13
Packs of	1 pc(s).
Net weight	1.9
Gross weight	1.99
Customs tariff number	94039910
EAN	4028177995451
ETIM 9	EC002713
ETIM 8	EC002713
ECLASS 8.0	27180101