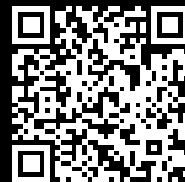


# Rittal – The System.

Faster – better – everywhere.



## TP 2683.600

## One-piece consoles

State: 8/08/2025 (Source: [rittal.com/ie-en](http://rittal.com/ie-en))

ENCLOSURES

POWER DISTRIBUTION

CLIMATE CONTROL

IT INFRASTRUCTURE

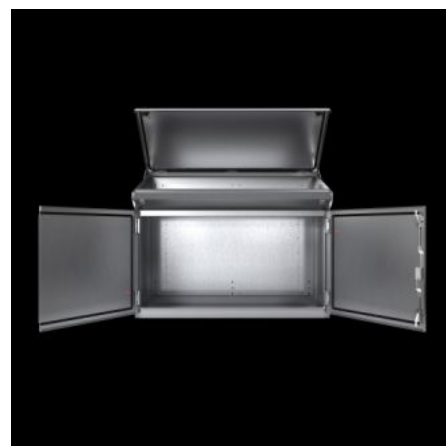
SOFTWARE & SERVICES

FRIEDHELM LOH GROUP



# TP 2683.600 - One-piece consoles Stainless steel

Stainless steel one-piece consoles 1.4301, (AISI 304), ready-to-use unit with high protection category IP 55 in four different widths. Easy handling thanks to self-latching lid stay. Interchangeable lock insert. Easy cable entry thanks to divided gland plates



## Features

Model No.	TP 2683.600
Material	Enclosure: Stainless steel 1.4301 (AISI 304), 1.5 mm Door or double door and console lid: Stainless steel 1.4301 (AISI 304), 2.0 mm Mounting plate: Sheet steel, 3.0 mm
Surface finish	Enclosure, door, console lid and gland plates: Brushed, grain 400 Mounting plate: Zinc-plated
Supply includes	Enclosure, solid back and sides Door or double door at front, with locking rod Console lid with lid stay and cam lock latched in the enclosure Locks with double-bit insert Gland plates, divided Mounting plate
Dimensions	Width: 600 mm Height: 960 mm
Dimensions mounting plate (W x H)	530 mm x 780 mm
Depth (top)	480 mm

## Features

Depth (bottom)	400 mm
Number of doors	1
IP protection category to IEC 60529	IP 55
Protection category NEMA	NEMA 12
Basic material	Stainless steel 1.4301 (AISI 304)
Dimensions	Width: 600 mm Height: 960 mm Depth (top): 480 mm Depth (bottom): 400 mm
Packs of	1 pc(s).
Net weight	47.85
Gross weight	52
Customs tariff number	94032080
EAN	4028177031319
ETIM 9	EC000784
ETIM 8	EC000784
ECLASS 8.0	27180504

## Approvals

Approvals	TÜV UL + C-UL (listed)
Explanations	Declaration of conformity Declaration of conformity UK