

# Rittal – The System.

Faster – better – everywhere.



## SK 3238.710 Blue e+ filter fan

State: 26/08/2025 (Source: [rittal.com/ie-en](https://www.rittal.com/ie-en))

ENCLOSURES

POWER DISTRIBUTION

CLIMATE CONTROL

IT INFRASTRUCTURE

SOFTWARE & SERVICES

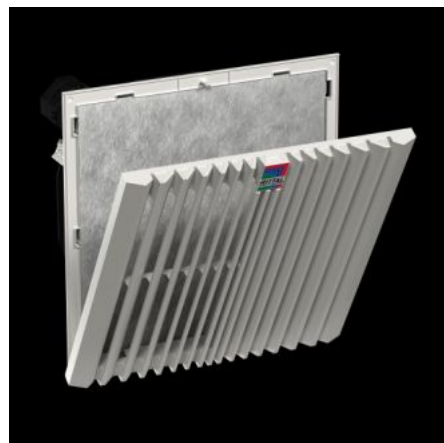
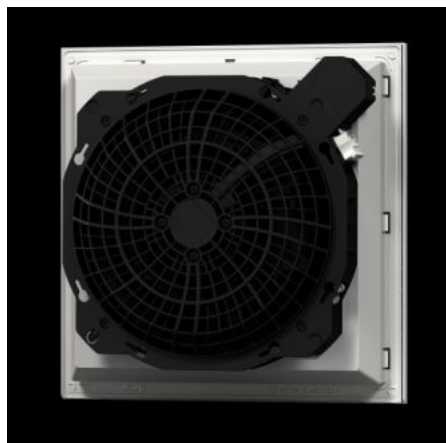
FRIEDHELM LOH GROUP





# SK 3238.710 - Blue e+ filter fan

Complete fan-and-filter units for tool-free installation in surfaces. Air throughput 20 – 1,160 m³/h, protection category IP 54 as standard.



## Features

Model No.	SK 3238.710
Design	wall-mounted
Product description	Fan-and-filter units with diagonal fan technology have superior pressure stability and ensure a more constant air throughput. The diagonal direction of outflow ensures more even heat dissipation from the enclosure.
Benefits	<p>Maximum air throughput via pleated filter included in the delivered state</p> <p>Easy filter changes, thanks to a new opening mechanism on the louvred grille</p> <p>Faster installation on the enclosure with optimised detent hooks</p> <p>Diagonal fan technology achieves more even and constant ventilation of the enclosure, thanks to improved pressure stability</p> <p>Tool-free assembly</p>
Material	Plastic
Colour	RAL 7035
Supply includes	Complete unit ready to install, including pleated filter
Fan	Axial, shaded pole motor



# Features

Air throughput, unimpeded airflow (with chopped-fibre filter)	At 50 Hz: 53 m³/h At 60 Hz: 64 m³/h
Air throughput, unimpeded airflow (with pleated filter)	At 50 Hz: 63 m³/h At 60 Hz: 72 m³/h
Air throughput with matching outlet filter including chopped-fibre filter	At 50 Hz: 40 m³/h At 60 Hz: 46 m³/h
Air throughput with matching outlet filter including pleated filter	At 50 Hz: 49 m³/h At 60 Hz: 55 m³/h
Rated operating voltage	115 V, 1~, 50 Hz/60 Hz
Power consumption Pel	At 50 Hz: 15.4 W At 60 Hz: 15.8 W
Rated current max.	At 50 Hz: 0.2 A At 60 Hz: 0.21 A
Dimensions	Width: 148.5 mm Height: 148.5 mm Depth: 82.5 mm
Installation depth	64 mm
Mounting cut-out	Cut-out width: 124 mm Cut-out height: 124 mm
IP protection category to IEC 60 529	IP 54 with chopped-fibre filter/pleated filter IP 55 with pleated filter and absorber mat IP 56 with chopped-fibre filter/pleated filter and hose-proof hood
Protection category NEMA	Type 12 with chopped-fibre filter/pleated filter Type 3, 3R, 4, 4X with chopped-fibre filter/pleated filter and hose- proof hood
Pre-fuse	Miniature circuit-breaker/fuse: 2 A
Note	With the filter fan 3237.XXX, electrical connection is made via two single wires (length approx. 300 mm) on the unit, for all other filter fans, a screwless spring terminal is used
Operating temperature range	-15 °C...55 °C
Storage temperature range	-30 °C...70 °C



# Features

Noise level	At 50 Hz: 52 dB(A) At 60 Hz: 54 dB(A)
Packs of	1 pc(s).
Net weight	0.8
Gross weight	0.859
Customs tariff number	84145915
EAN	4028177998247
ETIM 9	EC000320
ETIM 8	EC000320
ECLASS 8.0	27180716

# Approvals

Approvals	CSA 30 - KC Korea UL + C-UL - FTTA UR + C-UR (recognized)
Explanations	Declaration of conformity