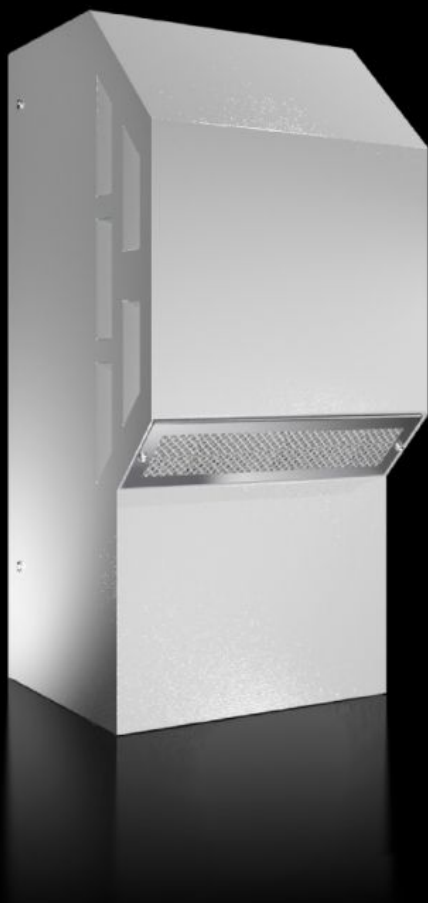


Rittal – The System.

Faster – better – everywhere.



SK 3303.518

TopTherm wall-mounted cooling unit Blue e, UL Type 3R/4

State: 7/09/2025 (Source: [rittal.com/ie-en](https://www.rittal.com/ie-en))

ENCLOSURES

POWER DISTRIBUTION

CLIMATE CONTROL

IT INFRASTRUCTURE

SOFTWARE & SERVICES

FRIEDHELM LOH GROUP



SK 3303.518 - TopTherm wall-mounted cooling unit

Blue e, UL Type 3R/4 0.5 - 2.5 kW

Energy-efficient Blue e wall-mounted cooling units in output categories 500 W to 2,500 W with integral e-Comfort controller and electric condensate evaporation (from 1000 W) as standard, protection category UL Type 3R/4, 12.



Features

Model No.	SK 3303.518
Design	wall-mounted
Product description	Energy-efficient Blue e wall-mounted cooling units with integral e-Comfort controller and electric condensate evaporation as standard. Protection category UL Type 3R/4, 12.
Benefits	Suitable for outdoor siting Blue e technology May be linked to the IoT interface via Blue e IoT adaptor for cooling units from 500 W cooling output with e-Comfort controller
Material	Sheet steel
Colour	RAL 7035
Supply includes	Condenser with hydrophobic RiNano coating Fully wired ready for connection (plug-in terminal strip) Drilling template Assembly parts

Features

Total cooling output to DIN EN 14511	Cooling output L35 L35/60 Hz: 0.5 kW Cooling output L35 L50/60 Hz: 0.28 kW
Rated operating voltage	115 V, 1~, 60 Hz
Rated current max.	At 60 Hz: 5.7 A
Start-up current max.	At 60 Hz: 11.5 A
Air throughput (unimpeded air flow)	External circuit: 345 m³/h Internal circuit: 280 m³/h
Energy efficiency ratio (EER) 50/60 Hz L35 L35	Refrigeration factor L35 L35 (EER) 50 Hz: 1.3 Refrigeration factor L35 L35 (EER) 60 Hz: 1.35
Design	wall-mounted
Dimensions	Width: 285 mm Height: 620 mm Depth: 298 mm
Protection category to IEC 60 529	External circuit IP 34 Internal circuit IP 56
Protection category NEMA	UL Type 3R UL Type 4 UL Type 12
Refrigerant/cooling medium	Refrigerant: R-513A Quantity: 0.19 kg Global Warming Potential (GWP): 631 CO2 equivalent (CO2e): 0.12 t
Temperature control	e-Comfort controller (factory setting +35 °C)
Operating temperature range	-20 °C...50 °C
Operating temperature max @60 Hz	50 °C
Operating temperature	Compressor cooling mode from +10 °C ambient temperature. Only the internal fan is active in the temperature range -20 °C to +10 °C.
Storage temperature range	-40 °C...70 °C
Setting range	20 °C...50 °C
Power consumption Pel	Power consumption L35 L35/60 Hz: 0.37 kW Power consumption L35 L50/60 Hz: 0.45 kW

Features

Permissible operating pressure (p. max.)	28 bar
Pre-fuse	Miniature circuit-breaker/fuse: 10 A
Note on Model No.	without integral condensate evaporation
Packs of	1 pc(s).
Net weight	30.5
Gross weight	36.5
Customs tariff number	84158200
EAN	4028177943681
ETIM 9	EC000855
ETIM 8	EC000855
ECLASS 8.0	27180704

Approvals

Approvals	C-UL UL + C-UL (listed) UL + C-UL - FTTA
Certificates	EAC
Explanations	Declaration of conformity Declaration of conformity - F-gas regulation Declaration of conformity UK