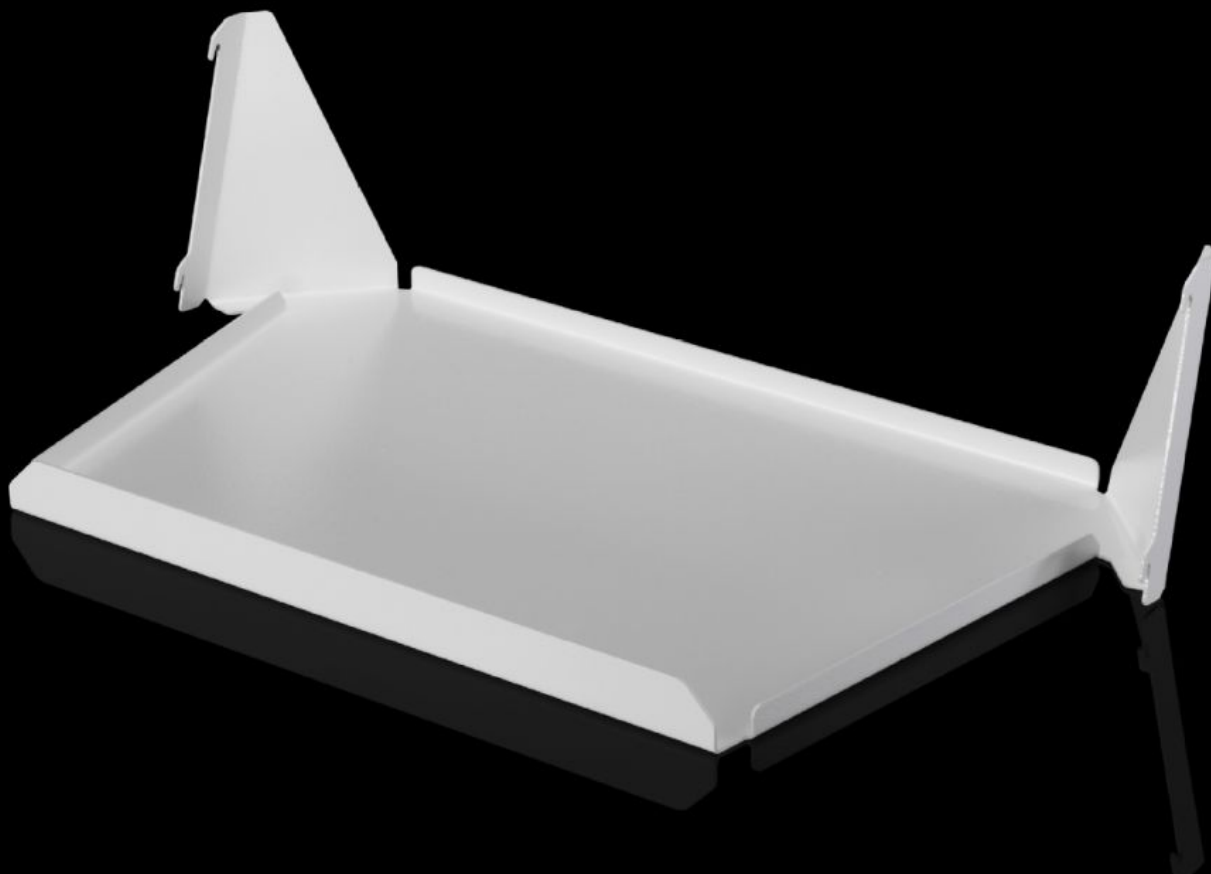
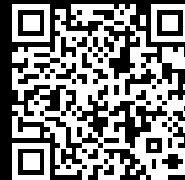


Rittal – The System.

Faster – better – everywhere.



AS 4051.055 Shelf

State: 8/05/2025 (Source: rittal.com/ie-en)

ENCLOSURES

POWER DISTRIBUTION

CLIMATE CONTROL

IT INFRASTRUCTURE

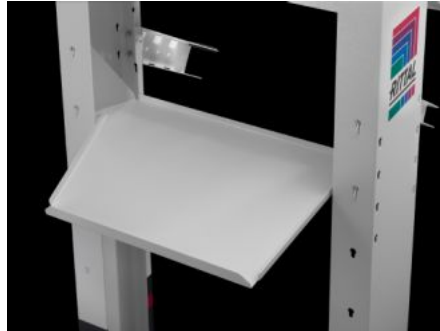
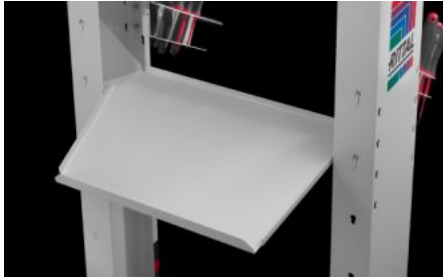
SOFTWARE & SERVICES

FRIEDHELM LOH GROUP



AS 4051.055 - Shelf Wire Cart

Storage shelves, e.g. for storage boxes.



Features

Model No.	AS 4051.055
Product description	Storage shelves, e.g. for storage boxes.
Benefits	Careful storage Easy to use
Technical specifications	The Wire Cart may be extended to a maximum of three storage shelves Storage boxes with a maximum size of W x H x D: 400 x 150 x 300 mm may be positioned on the storage shelves
To fit Model No.	4051.050
Packs of	1 pc(s).
Net weight	3
Gross weight	3.5
Customs tariff number	94032080
EAN	4028177960251