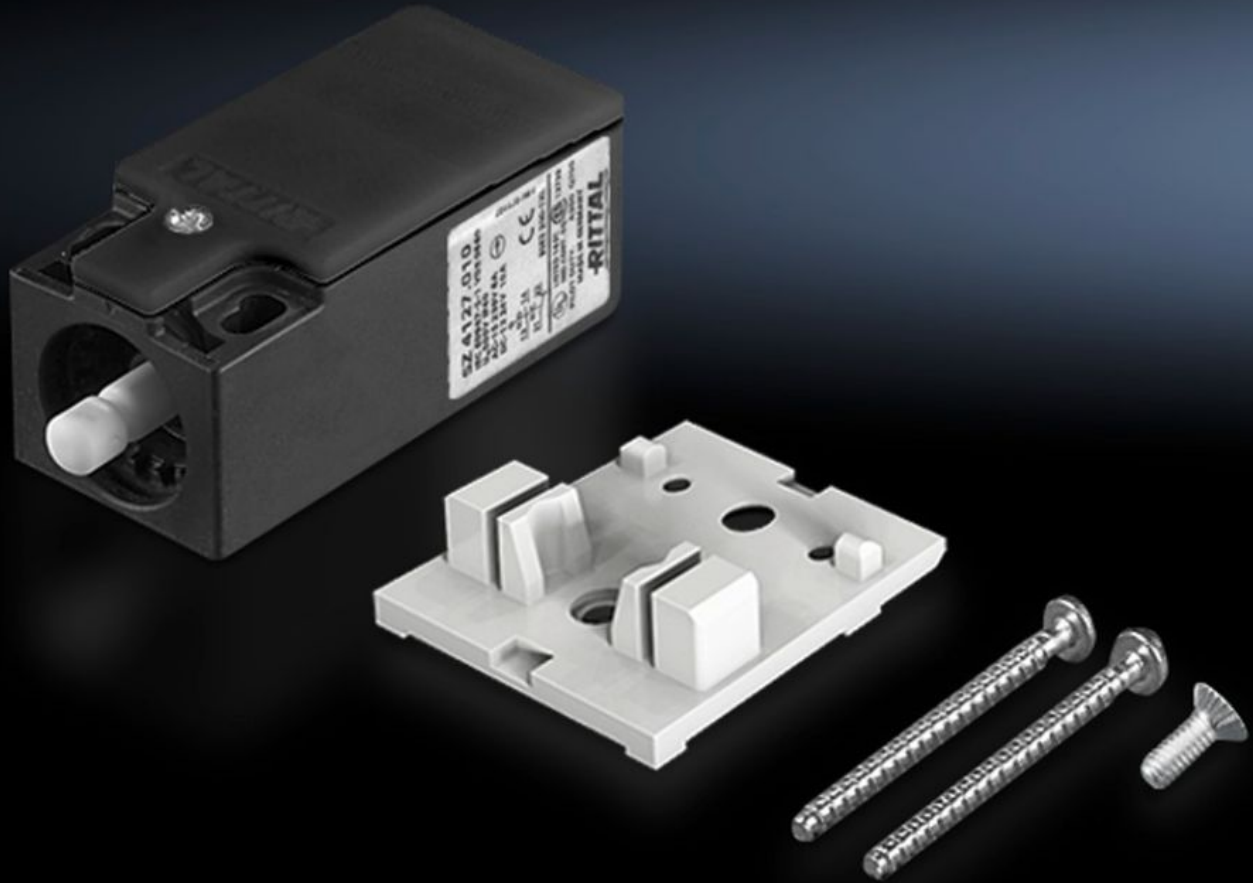


Rittal – The System.

Faster – better – everywhere.



SZ 4127.010 Door-operated switch

State: 11/05/2026 (Source: rittal.com/ie-en)

ENCLOSURES

POWER DISTRIBUTION

CLIMATE CONTROL

IT INFRASTRUCTURE

SOFTWARE & SERVICES

FRIEDHELM LOH GROUP



SZ 4127.010 - Door-operated switch

with mounting accessories, with or without connection cable.

Features

Model No.	SZ 4127.010
Design	Without connection cable
Note	For installation in VX IT only in conjunction with VX mounting bracket for door-operated switch
Rated impulse withstand voltage, phase to phase	6000 V AC
Rated insulation voltage	400 V AC
Installation options	for LED system light for standard and courtesy light without integral door-operated switch for cooling units and air-water heat exchangers
Electrical connection	240 V AC/6 A 125 V AC/8 A 24 V AC/6 A 24 V DC/6 A
Rated operating voltage	400 V
IP protection category to IEC 60529	IP 40
Packs of	1 pc(s).
Net weight	0.068 kg
Gross weight	0.076 kg
Customs tariff number	85365019
ETIM 9	EC002626
ETIM 8	EC002626
ECLASS 8.0	27189266

Features

Product description	SZ Door-operated switch, with accessory for interior installation, without connection cable
---------------------	---

Approvals

Approvals	CQC CQC-CCC CSA UL + C-UL (listed)
-----------	---

Explanations	Declaration of conformity Declaration of conformity UK
--------------	---