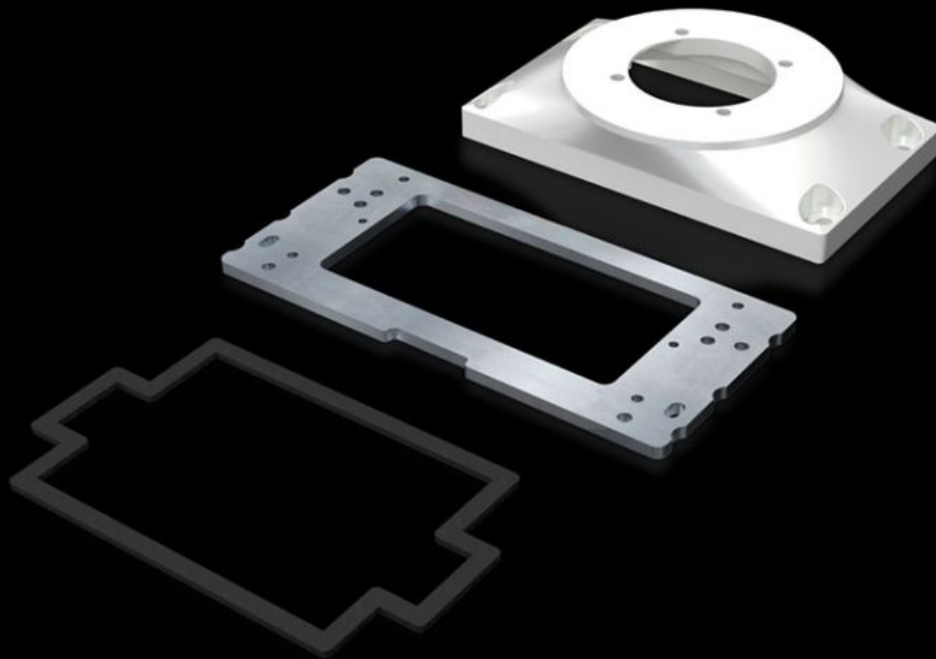


Rittal – The System.

Faster – better – everywhere.



CP 6212.540 Connection plate

State: 23/05/2026 (Source: rittal.com/ie-en)

ENCLOSURES

POWER DISTRIBUTION

CLIMATE CONTROL

IT INFRASTRUCTURE

SOFTWARE & SERVICES

FRIEDHELM LOH GROUP



CP 6212.540 - Connection plate with reinforcement plate

For easy location of the command panel onto the support arm or pedestal.

Features

| | |
|-----------------|--|
| Model No. | CP 6212.540 |
| Design | For mounting Comfort Panel from a front panel width of 247 mm and installation depth of 152 mm Optipanel from a front panel width of 220 mm and installation depth of 150 mm Sheet steel from 135 mm installation depth For mounting on support arm system components Attachment CP 60/120 for support arm connection Ø 130 mm, 6206.320, 6212.320 Coupling CP 60/120/180 for support arm connection Ø 130 mm, 6206.300, 6212.300, 6218.300 Angle coupling 90°, system 60/120 for support arm connection Ø 130 mm, CP 6206.380, 6212.380 Tilting adaptor 10°, system 60/120 for support arm connection Ø 130 mm, CP 6206.400 Tilting adaptor ±45°, system 60/120 for support arm connection Ø 130 mm, CP 6206.420 |
| Benefits | For easy location of the command panel onto the support arm or pedestal More space for cable entry |
| Material | Connection plate: Cast aluminium Reinforcement plate: Sheet steel, 6 mm |
| Colour | RAL 7035 |
| Supply includes | Reinforcement plate Seals Assembly parts |
| Packs of | 1 pc(s). |
| Net weight | 1.3 kg |
| Gross weight | 1.604 kg |

Features

| | |
|-----------------------|--|
| Customs tariff number | 76169990 |
| ETIM 9 | EC000882 |
| ECLASS 8.0 | 27400556 |
| Product description | CP Connection plates, with reinforced plate CP 120/60, for support arm connection Ø 130 mm |

Approvals

| | |
|--------------|----------------------------|
| Explanations | Manufacturer's declaration |
|--------------|----------------------------|