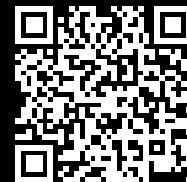


# Rittal – The System.

Faster – better – everywhere.



## CP 6372.543 Comfort Panel

State: 2/09/2025 (Source: [rittal.com/ie-en](http://rittal.com/ie-en))

ENCLOSURES

POWER DISTRIBUTION

CLIMATE CONTROL

IT INFRASTRUCTURE

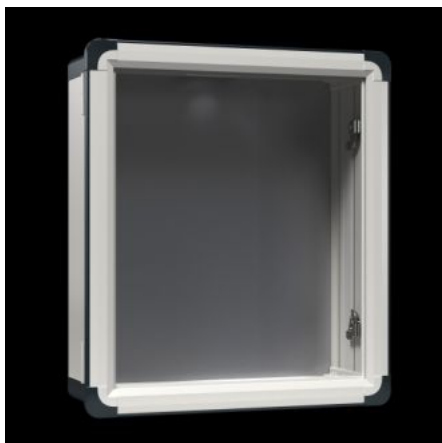
SOFTWARE & SERVICES

FRIEDHELM LOH GROUP



# CP 6372.543 - Comfort Panel

Aluminium enclosure, high thermal conductivity for optimum passive heat dissipation. Low weight coupled with high stability. Protection category IP 65 to IEC 60 529.



## Features

|                 |  |
|-----------------|--|
| Model No.       | CP 6372.543  |
| Design          | Support arm connection Ø 130 mm  |
| Benefits        | Aluminium enclosure, high thermal conductivity for optimum passive heat dissipation.<br>Low weight coupled with high stability<br>Compatible with all Rittal stand and support arm systems   |
| Material        | Enclosure: Extruded aluminium section<br>Corner pieces: Die-cast zinc<br>Corner protectors: Plastic  |
| General colour  | Natural anodised   |
| Colour          | Enclosure: Natural anodised<br>Corner pieces: RAL 7035<br>Corner protectors: similar to RAL 7024   |
| Supply includes | Enclosure with cut-out for support arm connection<br>3 mm double-bit lock insert may be exchanged for 41 mm lock inserts, plastic handles and T handles, type C<br>Seals and assembly parts for front panels<br>Hinged rear panel, hinging on the longest side |

# Features

|                                     |   |
|-------------------------------------|---|
| Dimensions                          | Width: 628.5 mm<br>Height: 508.5 mm<br>Depth: 209 mm                                    |
| Installation depth                  | 191 mm  |
| IP protection category to IEC 60529 | IP 65   |
| Protection category NEMA            | NEMA 12   |
| To fit front panel width            | 520 mm  |
| To fit front panel height           | 400 mm  |
| Design                              | Servicing access from the rear  |
| Note                                | The support arm connection may be swapped over by rotating the enclosure                |
| Basic material                      | Aluminium   |
| Lock                                | Lock version: Crescent-shaped cam<br>Number of locks: 2<br>Lock insert: 3 mm double-bit |
| Packs of                            | 1 pc(s).  |
| Net weight                          | 16.241  |
| Gross weight                        | 19.296  |
| Customs tariff number               | 94032080  |
| EAN                                 | 4028177663084   |
| ETIM 9                              | EC002504  |
| ECLASS 8.0                          | 27180505  |

# Approvals

|              |   |
|--------------|---|
| Approvals    | UL + C-UL (listed)  |
| Explanations | Declaration of conformity<br>Declaration of conformity UK |