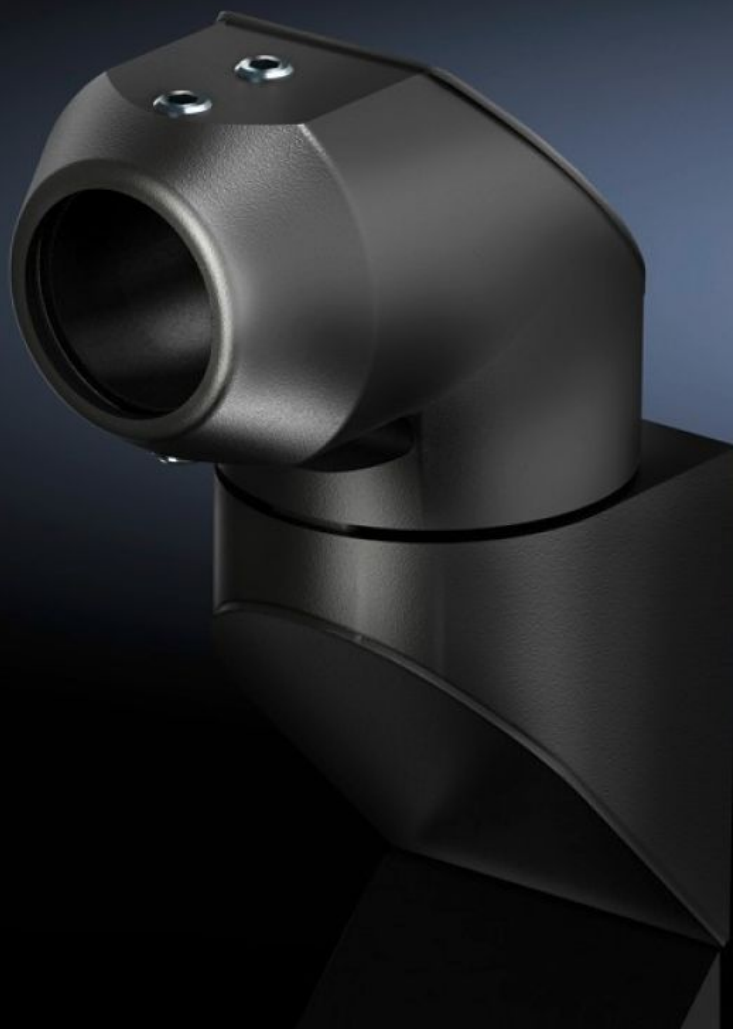


Rittal – The System.

Faster – better – everywhere.



CP 6501.150

Wall-mounted hinge CP, 40, steel

State: 31/01/2026 (Source: rittal.com/ie-en)

ENCLOSURES

POWER DISTRIBUTION

CLIMATE CONTROL

IT INFRASTRUCTURE

SOFTWARE & SERVICES

FRIEDHELM LOH GROUP



CP 6501.150 - Wall-mounted hinge CP, 40, steel

For swivel mounting of the support arm on vertical surfaces.

Features

Model No.	CP 6501.150
Material	Cast aluminium
Surface finish	Textured paint
Colour	RAL 7024
Rotating/tilting	Yes
Rotation angle/swivel area	approx. 330°, provided the top joint is able to move freely
Packs of	1 pc(s).
Net weight	2.119
Gross weight	2.128
Customs tariff number	76169990
EAN	4028177436077
ETIM 9	EC000882
ECLASS 8.0	27400556

Approvals

Explanations	Manufacturer's declaration
--------------	----------------------------