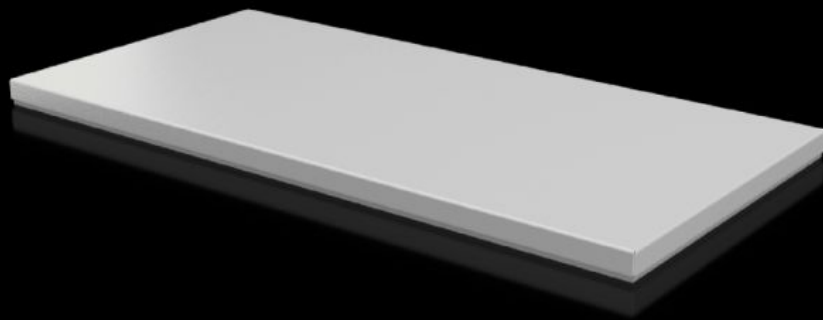


Rittal – The System.

Faster – better – everywhere.



CX 6730.910 Cover plate

State: 11/07/2026 (Source: rittal.com/ie-en)

ENCLOSURES

POWER DISTRIBUTION

CLIMATE CONTROL

IT INFRASTRUCTURE

SOFTWARE & SERVICES

FRIEDHELM LOH GROUP



CX 6730.910 - Cover plate For CX console system

To seal the roof opening of CX pedestals and desk units.

Features

Model No.	CX 6730.910
Material	Sheet steel
Surface finish	Textured paint
Colour	RAL 7035
Supply includes	Assembly parts
To fit	Enclosure type: CX pedestal Width: = 800 mm Depth: = 400 mm
Protection category NEMA	NEMA 1 NEMA 12
IP protection category to IEC 60529	IP 55
Packs of	1 pc(s).
Net weight	5.4 kg
Gross weight	5.53 kg
Customs tariff number	94039910
ETIM 9	EC000784
ETIM 8	EC000784
ECLASS 8.0	27180504
Product description	CX cover plate, for CX pedestal, for WxD: 800x400 mm, sheet steel

Approvals

Approvals

Approvals	UL + C-UL (listed)
Explanations	Declaration of conformity
