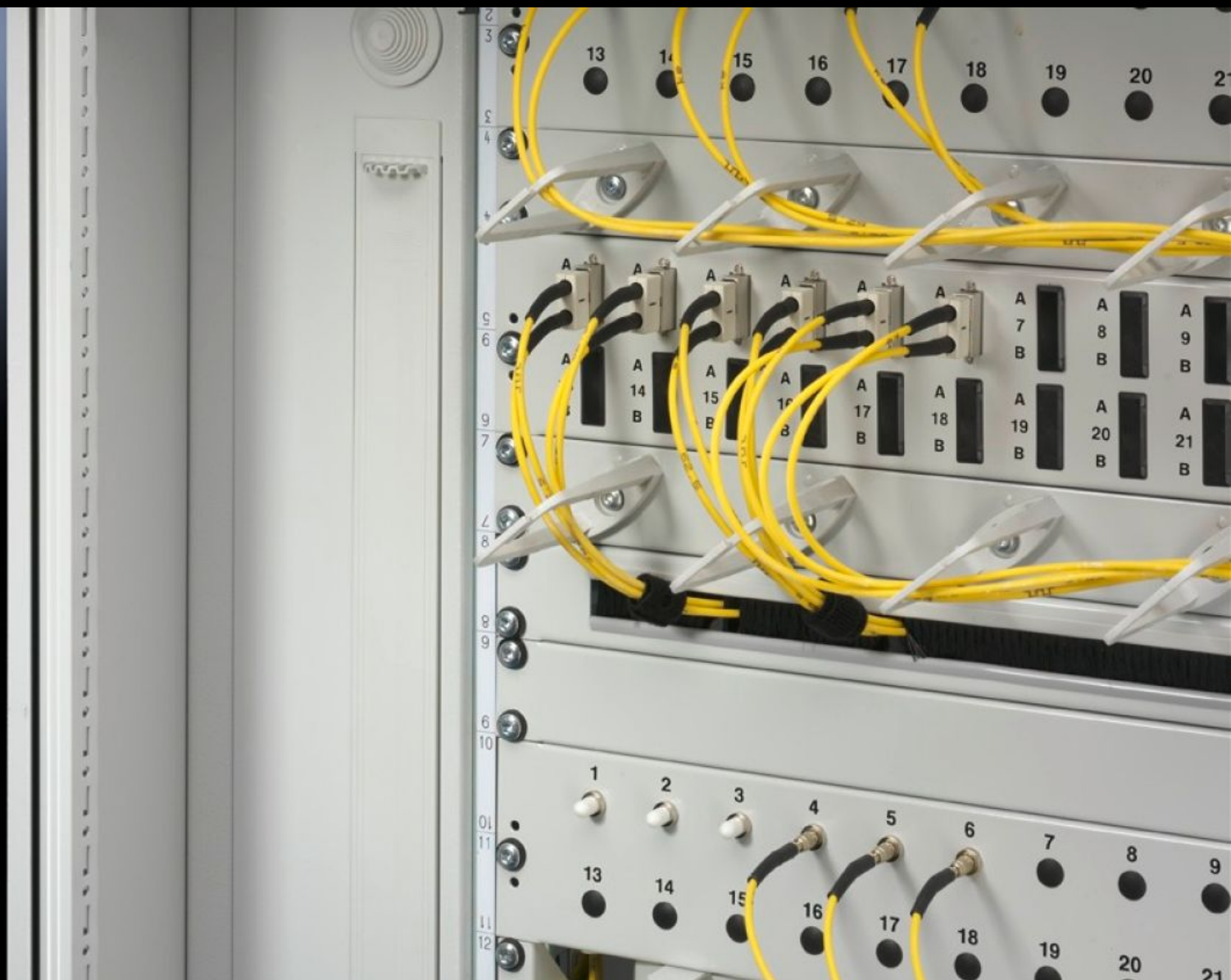
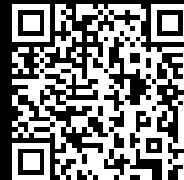


Rittal – The System.

Faster – better – everywhere.



DK 7151.206 Air baffle plates

State: 2/08/2025 (Source: rittal.com/ie-en)

ENCLOSURES

POWER DISTRIBUTION

CLIMATE CONTROL

IT INFRASTRUCTURE

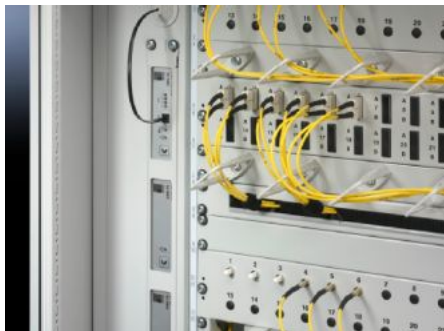
SOFTWARE & SERVICES

FRIEDHELM LOH GROUP



DK 7151.206 - Air baffle plates for TS 8

For targeted air routing to the components, to prevent bridges between hot and cold air, energy efficiency is boosted while retaining cooling output.



Features

Model No.	DK 7151.206
Product description	Targeted air routing to the components. To prevent bridges between hot and cold air. Energy efficiency is boosted while retaining cooling output. Mounted all-round on the 482.6 mm (19") installation between the 482.6 mm (19") mounting frame and modular LCP, LCP Plus, side panel or partition. The width-variable air baffle plates may be individually adapted to suit the requirements. In the variant for 800 mm wide enclosures, vertical 482.6 mm (19") mounting holes of 3 x 1 U are additionally integrated, which may be used for configuration with additional components. Cable glands with stepped collars distributed across the height facilitate shielded cable routing between the front and rear chamber. In the delivered state, these openings are each covered with a 1 U blanking panel with snap-in fastening.
Material	Air baffle plates: Sheet steel, spray finished Stepped collar: Plastic, to UL 94-V0 Blanking panel: Plastic, to UL 94-V0
Colour	RAL 7035
Supply includes	2 air baffle plates, side, width-variable 1 air baffle plate, top, horizontal With 800 mm width including blanking panel and stepped collar
Note	Mounting on the inner and outer mounting level in the enclosure depth is not possible.

Features

To fit	Enclosure type: TS 8 Width: 600 mm Height: 2,000 mm
Packs of	2 pc(s).
Net weight	6.143
Customs tariff number	73269098
EAN	4028177597303
ECLASS 8.0	27189272

Tender text

Air baffle plate for TS

Targeted air routing to the components. Avoids unused air bridges between the warm and cold aisle. Boosts energy efficiency at the same cooling output.

Mounted all-round on the 482.6 mm (19") installation between the 482.6 mm (19") mounting frame and modular LCP, LCP Plus, side panel or partition.

The width-variable air baffle plates may be individually adapted to suit the requirements.

For TS WxH 600 x 2000 mm

Material:

Air baffle plates: Sheet steel, spray-finished, RAL 7035

Surface finish: Powder-coated in RAL 7035

Supply includes:

2 side air baffle plates, width-variable

1 air baffle plate at the top, horizontal