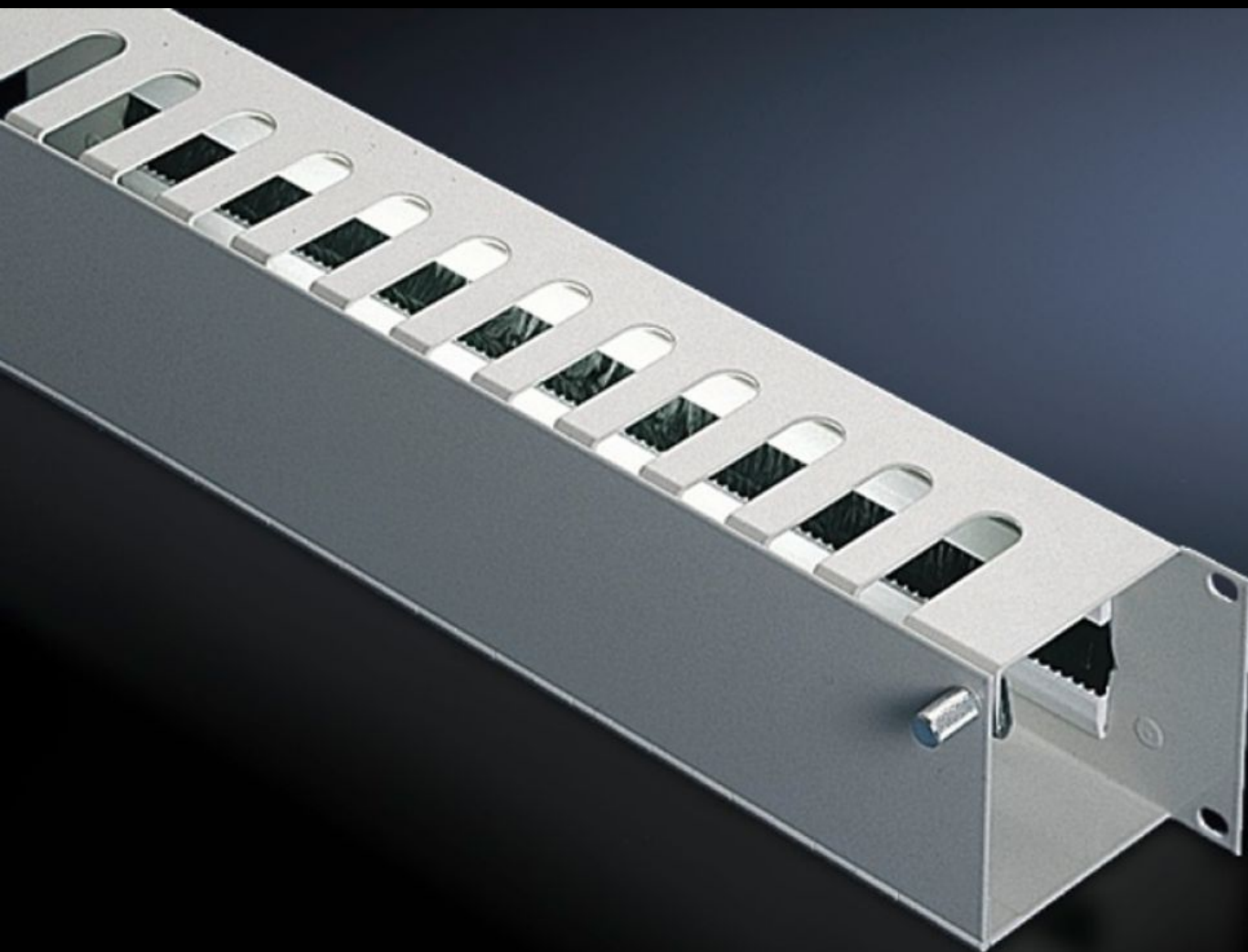
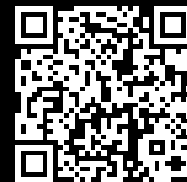


Rittal – The System.

Faster – better – everywhere.



DK 7158.035

Cable management panel

State: 17/09/2025 (Source: rittal.com/ie-en)

ENCLOSURES

POWER DISTRIBUTION

CLIMATE CONTROL

IT INFRASTRUCTURE

SOFTWARE & SERVICES

FRIEDHELM LOH GROUP



DK 7158.035 - Cable management panel with front flap

Cable routing chamber with cut-outs from above, equipped with a flap and quick-release fasteners at the front for optimum access, insertion from the rear via a cut-out with brush strips.

Features

| | |
|-----------------------|---|
| Model No. | DK 7158.035 |
| Product description | The cable routing chamber has cut-outs from above, into which the patch cables can be inserted. The cable management panel is equipped with a flap and quick-release fasteners at the front, for optimum access to the cables. From the rear, the cables can be inserted via a cut-out with brush strips. |
| Material | Sheet steel |
| Surface finish | Spray-finished |
| Colour | RAL 7035 |
| Depth of bars | 55 mm |
| Dimensions | Width: 482.6 mm |
| Units | 2 U |
| Packs of | 1 pc(s). |
| Net weight | 1.684 |
| Gross weight | 1.746 |
| Customs tariff number | 94039910 |
| EAN | 4028177166684 |
| ETIM 9 | EC000322 |
| ECLASS 8.0 | 27400604 |

Tender text

Cable management panel, 482.6 mm (19"), 2 U

482.6 mm (19") cable management panel, 2 U, with cable routing chamber for horizontal patch cable management.

There are cutouts in the upper section of the cable management panel and there is also a cutout fitted with a brush strip in the rear section of the cable management panel. A flap with quick-release fasteners enables the patch cable to be accessed from the front.

Material: Sheet steel

Colour: RAL 7035