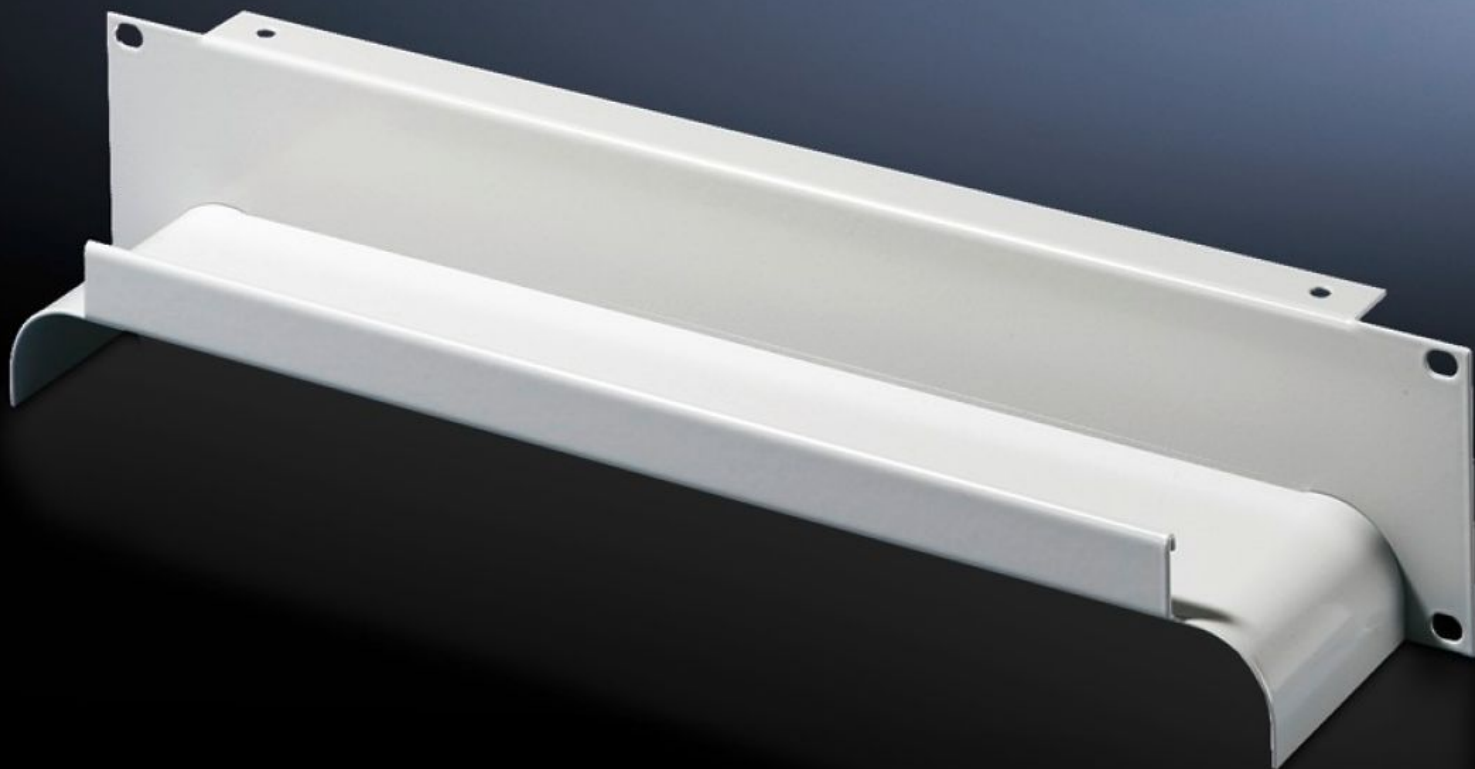


**Rittal – The System.**

Faster – better – everywhere.



# DK 7269.235

## Cable tray, 2 U

State: 23/05/2025 (Source: [rittal.com/ie-en](https://www.rittal.com/ie-en))

ENCLOSURES

POWER DISTRIBUTION

CLIMATE CONTROL

IT INFRASTRUCTURE

SOFTWARE & SERVICES

FRIEDHELM LOH GROUP



# DK 7269.235 - Cable tray, 2 U

To accommodate fibre-optic and copper cables, fibres from the patch panels are placed into the tray via openings and may be distributed at the sides.

## Features

|                       |  |
|-----------------------|--|
| Model No.             | DK 7269.235  |
| Product description   | For side routing and distribution of fibre-optic and copper cables. In this way, cables inserted into the roof area may be routed at the side of the mounting angles in the upper section of the rack. |
| Material              | Sheet steel  |
| Colour                | RAL 7035   |
| Dimensions            | Depth: 85 mm   |
| Units                 | 2 U  |
| Packs of              | 1 pc(s).   |
| Net weight            | 0.96   |
| Gross weight          | 1.16   |
| Customs tariff number | 94039910   |
| EAN                   | 4028177221666  |
| ETIM 9                | EC000322   |
| ECLASS 8.0            | 27400604   |

## Tender text

Cable tray 2 U

Material: Sheet steel, spray finished in RAL 7035