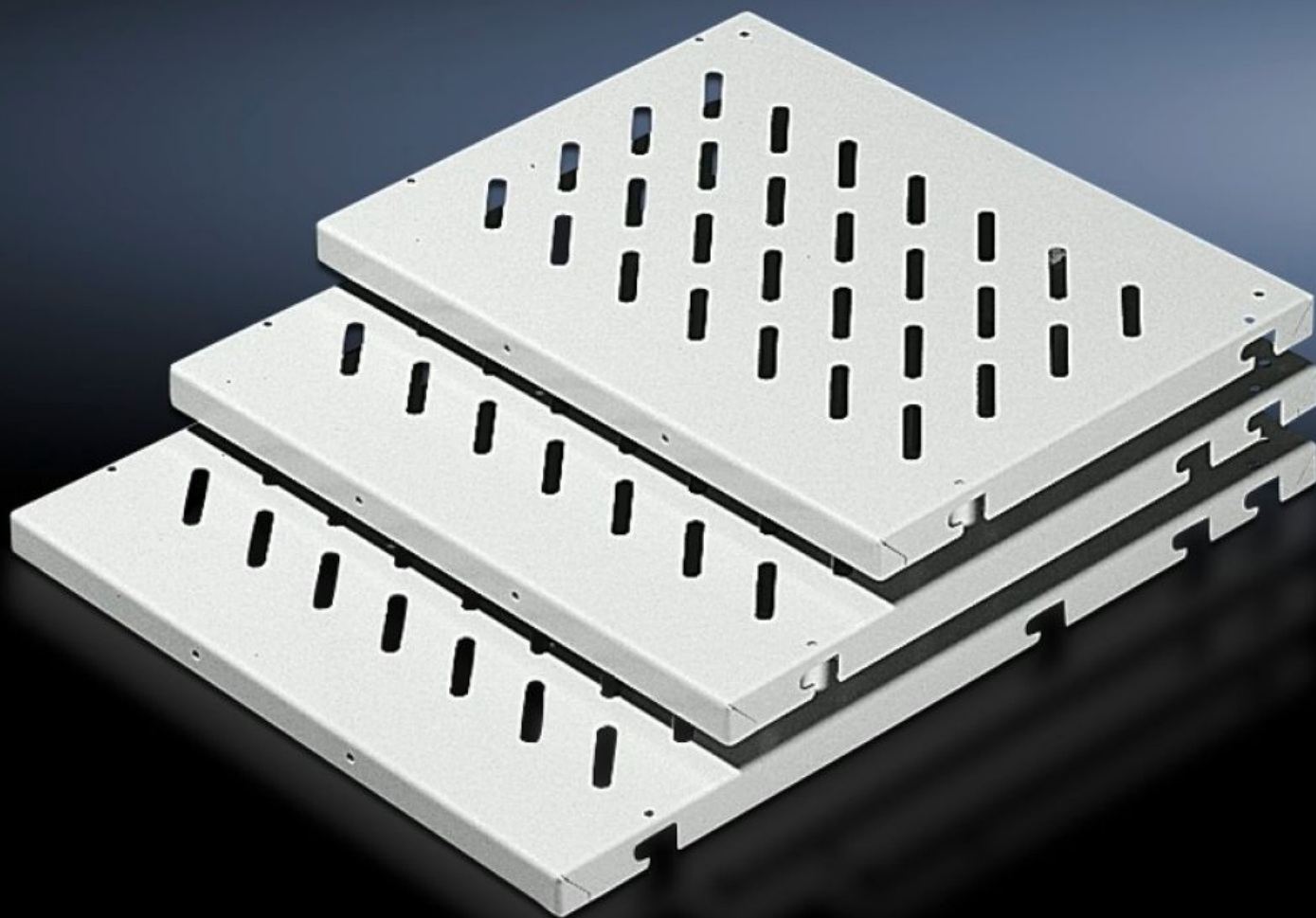
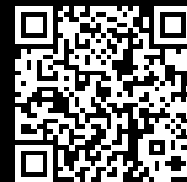


Rittal – The System.

Faster – better – everywhere.



DK 7486.035

**Component shelf for frame
attachment**

State: 21/07/2025 (Source: rittal.com/ie-en)

ENCLOSURES

POWER DISTRIBUTION

CLIMATE CONTROL

IT INFRASTRUCTURE

SOFTWARE & SERVICES

FRIEDHELM LOH GROUP



DK 7486.035 - Component shelf for frame attachment

For frame attachment, for installation in enclosures without 482.6 mm (19") accommodation, enclosure width: 600 and 800 mm, load capacity: 50 kg / 100 kg.

Features

| | |
|----------------------|---|
| Model No. | DK 7486.035 |
| Design | Slotted |
| Product description | For frame attachment, for installation in enclosures without 482.6 mm (19") accommodation. |
| Benefits | Mounting bolts or mounting rails may be installed on a 25 mm pitch pattern in the enclosure depth. Mounting hole for handles provided. |
| Applications | For installation in enclosures without 482.6 mm (19") accommodation |
| Material | Sheet steel |
| Surface finish | Spray-finished |
| Colour | RAL 7035 |
| Supply includes | Component shelf, slotted 2 mounting rails |
| Installation options | Static installation: Component shelf, 50 kg with fixing bolts on punched section without mounting flange Static installation: Component shelf, 100 kg with mounting rails on punched sections without mounting flange Depth variable: Component shelf, 50 kg with telescopic slides on punched sections without mounting flange |
| Load capacity | 100 kg area load |
| Assembly instruction | Additionally, two punched sections with mounting flanges are required for the inner mounting level |
| Note | Max. depth of component shelves = Enclosure depth - 100 mm. |

Features

| | |
|-------------------------------|--|
| Dimensions | Width: 671 mm Height: 45 mm Depth: 600 mm |
| To fit | Enclosure type: VX VX IT TS IT Width: 800 mm |
| Packs of | 1 pc(s). |
| Net weight | 9.5 |
| Gross weight | 9.9 |
| PCF per pack (cradle-to-gate) | 37.8 kg CO2 eq (Cat B) |
| Note on PCF category | Category B: PCF value (cradle-to-gate) based on the product weight, approximately calculated and self-declared |
| Customs tariff number | 94039910 |
| EAN | 4028177166035 |
| ETIM 9 | EC002620 |
| ECLASS 8.0 | 27189261 |

Tender text

Component shelves for 800 mm wide network enclosures

Component shelves e for 800 mm wide network enclosures

Version: Max. load capacity 100 kg

Component shelves, W x D = 671 x 600 mm, 2 mm thick sheet steel version; for installing in 800 mm wide network enclosures.

The component shelf is slotted to prevent the accumulation of heat. The component shelves can hold a maximum load of 100 kg.

The height of the fitted component shelves can be adjusted using the 25 mm pitch pattern in network enclosures with a DIN pitch pattern but is infinitely adjustable in network enclosures with aluminium frames.

Material: Sheet steel

Spray finish: RAL 7035.

Dimensions: W x D: 671 x 600 mm