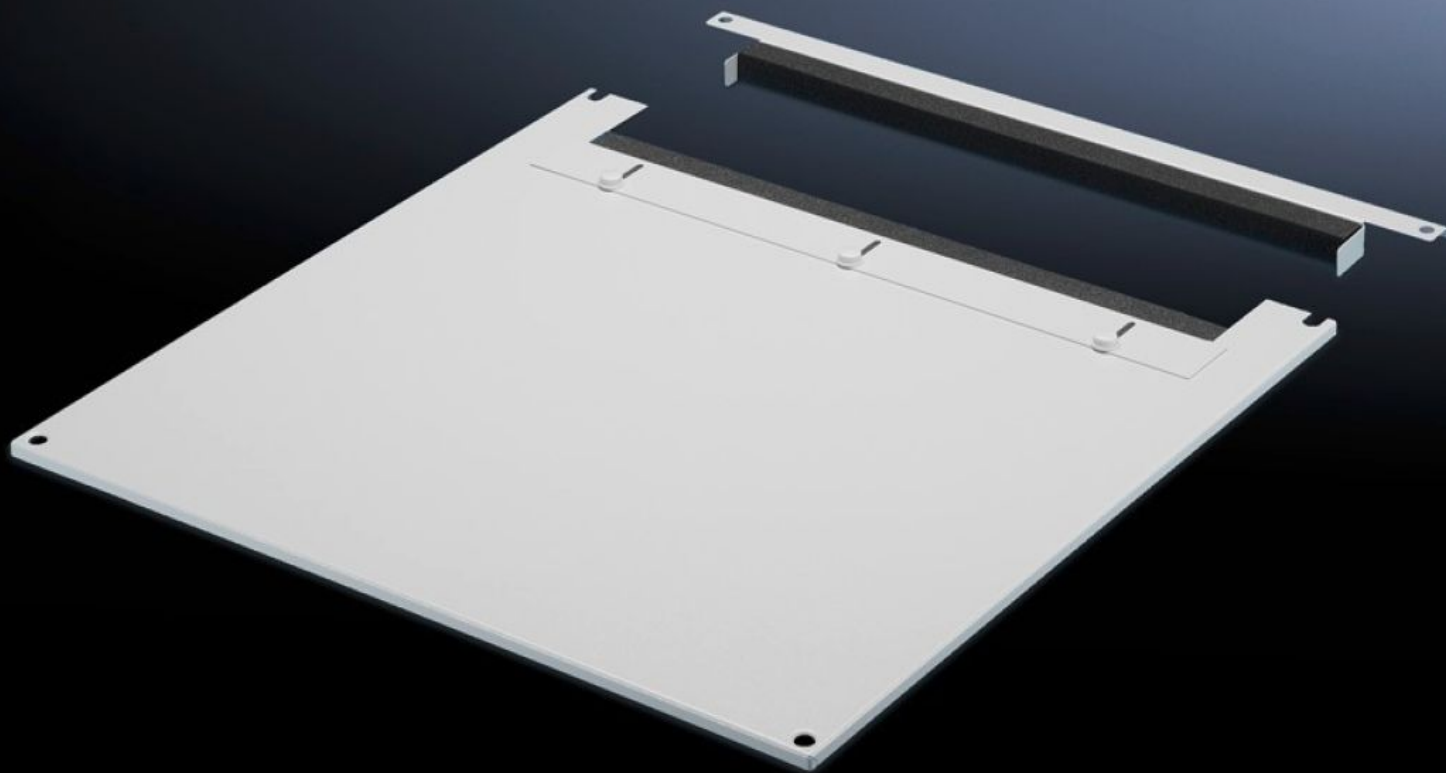
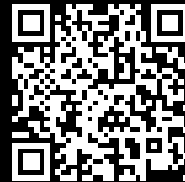


**Rittal – The System.**

Faster – better – everywhere.



**TS 7826.805**

**Roof plate for cable entry, two-piece**

State: 6/08/2025 (Source: [rittal.com/ie-en](https://www.rittal.com/ie-en))

ENCLOSURES

POWER DISTRIBUTION

CLIMATE CONTROL

IT INFRASTRUCTURE

SOFTWARE & SERVICES

FRIEDHELM LOH GROUP



# TS 7826.805 - Roof plate for cable entry, two-piece for VX, VX IT, TS, TS IT

The two-piece design allows easy retro-fitting, by simply removing the front part of the plate for retrospective cable entry.



## Features

Model No.	TS 7826.805
Product description	In exchange for the standard roof. Equipped with a sliding angular bracket in the rear section. Rubber cable clamp strip on both sides for attaching cable bundles and bunched cables. Due to the symmetrical design of the frame, side cable entry can also be achieved by rotating the roof plate. The two-piece design allows convenient retrofitting.
Material	Sheet steel
Colour	RAL 7035
To fit	Width: 800 mm Depth: 1,000 mm
Packs of	1 pc(s).
Net weight	11.11
Gross weight	11.695
Customs tariff number	73269098
EAN	4028177345386
E-Number Sweden	E7239744
ETIM 9	EC000744

# Features

---

ECLASS 8.0

27182405

## Tender text

Cable entry roof plate, two-piece  
for TS, TS IT

Material: Sheet steel, spray finished in RAL 7035

Dimensions (W x H x D): 800 mm x 0 mm x 1000 mm