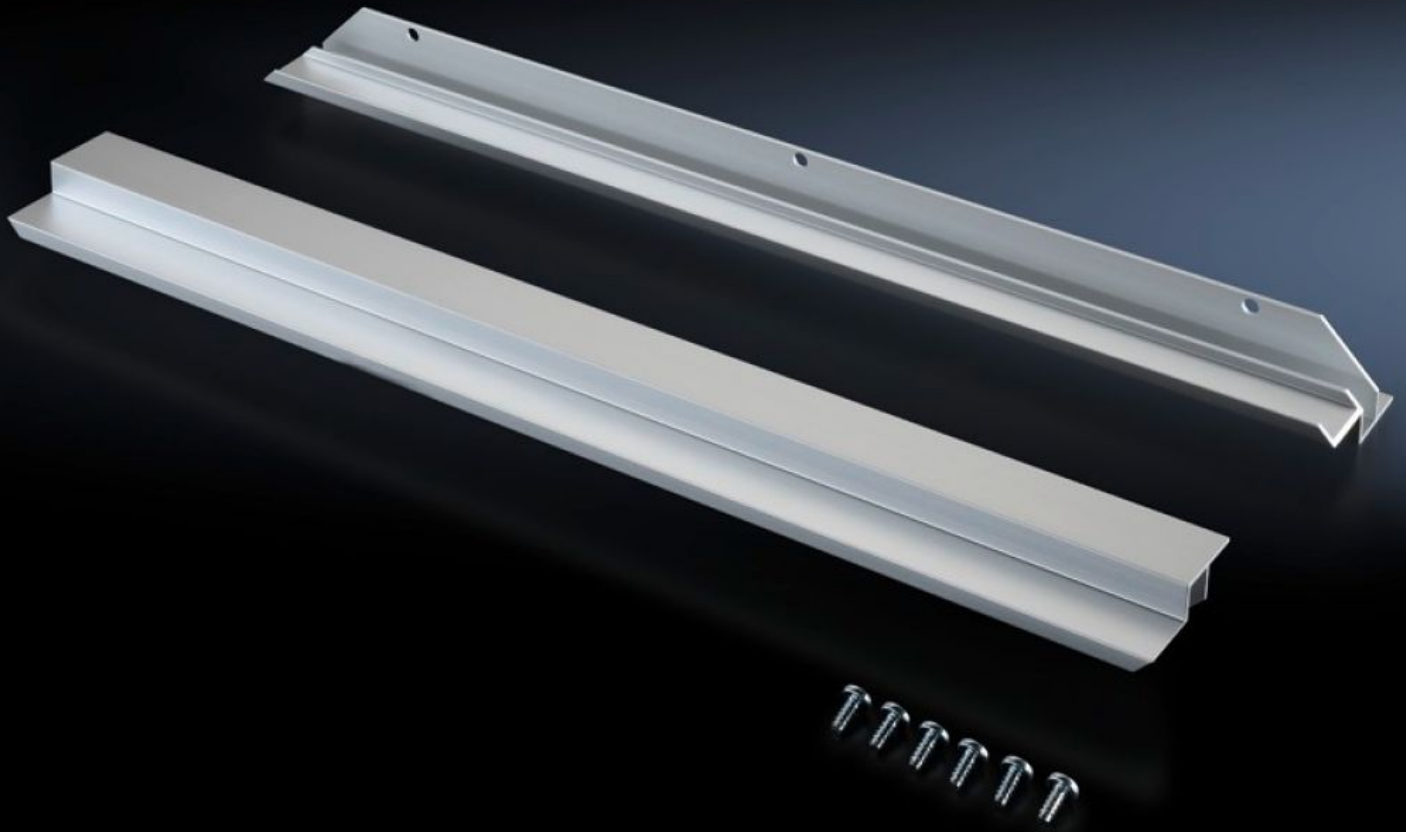


Rittal – The System.

Faster – better – everywhere.



TS 8613.030

Infill panels, 482.6 mm (19"), horizontal

State: 22/05/2026 (Source: rittal.com/ie-en)

ENCLOSURES

POWER DISTRIBUTION

CLIMATE CONTROL

IT INFRASTRUCTURE

SOFTWARE & SERVICES

FRIEDHELM LOH GROUP



TS 8613.030 - Infill panels, 482.6 mm (19"), horizontal for adaptor sections

To infill between installed 482.6 mm (19") equipment positioned in the full enclosure height and the enclosure clearance height.



Features

Model No.	TS 8613.030
Product description	To infill between installed 482.6 mm (19") equipment positioned in the full enclosure height and the enclosure clearance height.
Material	Extruded aluminium section
Supply includes	Assembly parts
To fit	Enclosure type: TS Height: = 1,800 mm = 2,200 mm
Packs of	2 pc(s).
Net weight	0.5 kg
Gross weight	0.571 kg
Customs tariff number	83024200
ETIM 9	EC002625
ECLASS 8.0	27189234
Product description	TS Infill panels, 482.6 mm (19"), horizontal for Adapter-Profile, for H: 1800/2200 mm