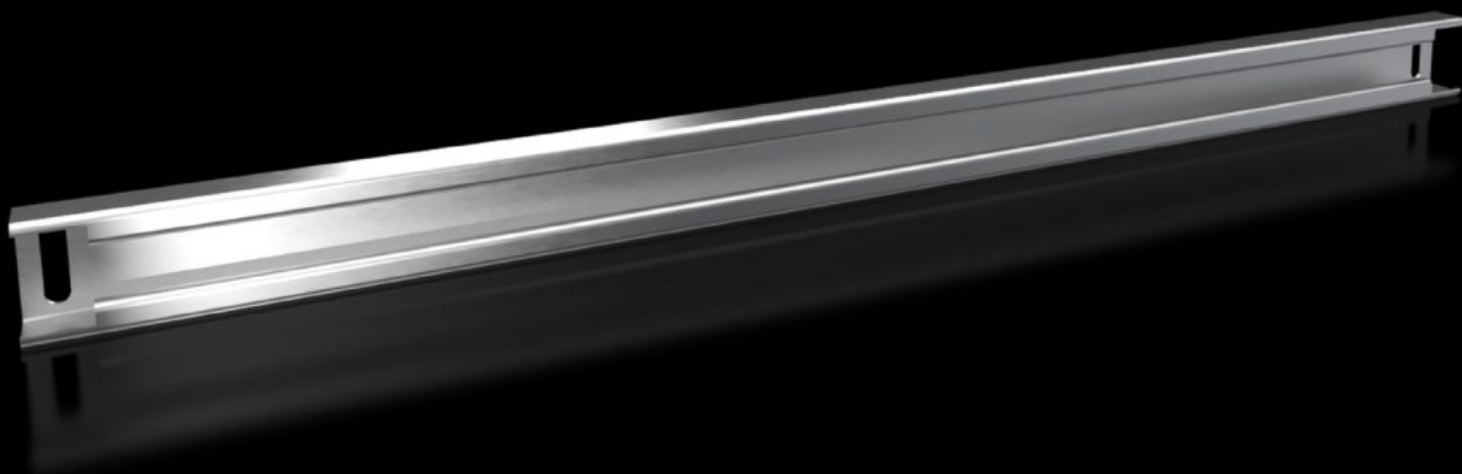
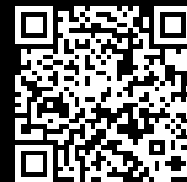


# Rittal – The System.

Faster – better – everywhere.



## VX 8617.810

## Support rail 48 x 26 mm

State: 4/08/2025 (Source: [rittal.com/ie-en](http://rittal.com/ie-en))

ENCLOSURES

POWER DISTRIBUTION

CLIMATE CONTROL

IT INFRASTRUCTURE

SOFTWARE & SERVICES

FRIEDHELM LOH GROUP



# VX 8617.810 - Support rail 48 x 26 mm for VX, VX SE, PC, IW, AX

For heavy installed equipment such as transformers. T-head screw and slots in the support rail accommodate all mounting dimensions.



## Features

Model No.	VX 8617.810
Product description	
Material	Sheet steel
Surface finish	Zinc-plated
Supply includes	Assembly parts
VX installation options	In enclosure width 800 mm, on the inner mounting level and in the base
VX SE installation options	In enclosure width 800 mm, on the inner mounting level, in conjunction with adaptor rail for VX compatibility and in the base
AX installation options	In enclosure width 800 mm, in conjunction with rail for interior installation AX and base configuration rail for AX
PC installation options	In enclosure width 800 mm, on the inner mounting level, in conjunction with adaptor rail for VX compatibility and in the base
WI installation options	In enclosure width 800 mm, on the inner mounting level, in conjunction with adaptor rail for VX compatibility and in the base

# Features

To fit	Enclosure type: VX VX SE PC IW AX CX one-piece console CX pedestal Width: = 800 mm
Packs of	2 pc(s).
Net weight	3.89
Gross weight	4.1
Customs tariff number	73269098
EAN	4028177919525
ETIM 9	EC001285
ECLASS 8.0	27189261