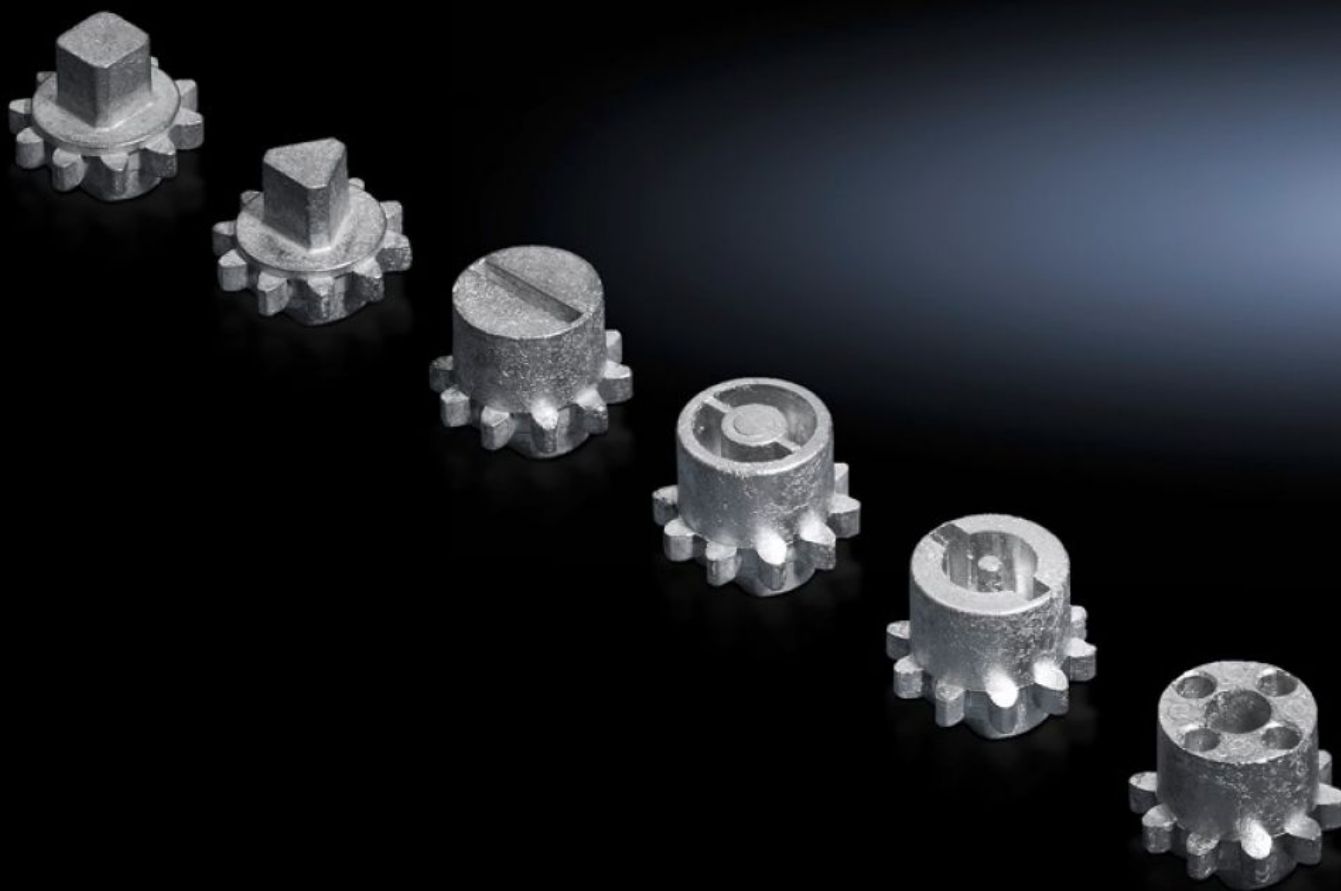
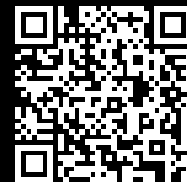


Rittal – The System.

Faster – better – everywhere.



VX 8618.302

Lock insert

State: 8/09/2025 (Source: rittal.com/ie-en)

ENCLOSURES

POWER DISTRIBUTION

CLIMATE CONTROL

IT INFRASTRUCTURE

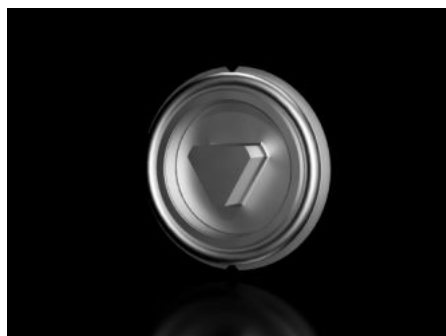
SOFTWARE & SERVICES

FRIEDHELM LOH GROUP



VX 8618.302 - Lock insert type G

For handles and enclosures.



Features

Model No.	VX 8618.302
Design	G
Material	Die-cast zinc
Installation in handle system	Comfort handle VX for padlock and lock inserts
Lock	Lock insert: 7 mm triangular
To fit enclosure type	VX VX IT
Packs of	1 pc(s).
Net weight	0.013
Gross weight	0.014
Customs tariff number	83016000
EAN	4028177921832
ETIM 9	EC000743
ECLASS 8.0	27409218