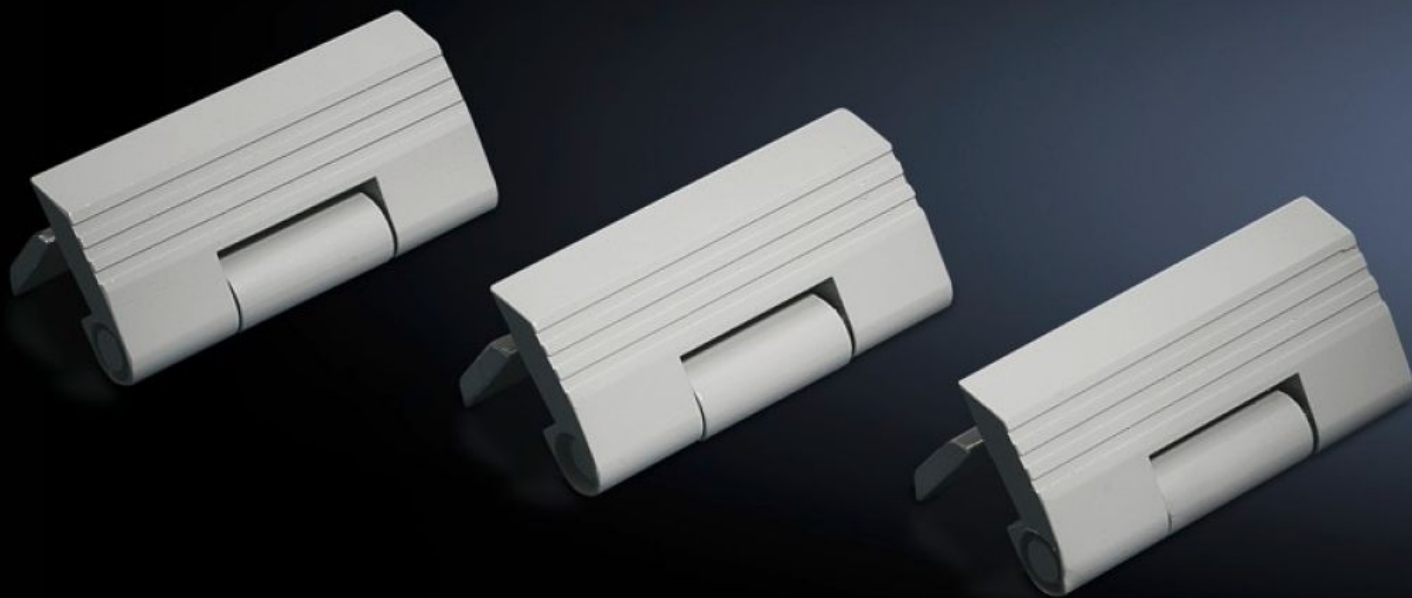
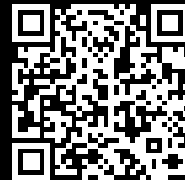


# Rittal – The System.

Faster – better – everywhere.



## TS 8800.110 Hinge

State: 26/07/2025 (Source: [rittal.com/ie-en](https://www.rittal.com/ie-en))

ENCLOSURES

POWER DISTRIBUTION

CLIMATE CONTROL

IT INFRASTRUCTURE

SOFTWARE & SERVICES

FRIEDHELM LOH GROUP



# TS 8800.110 - Hinge for side panel TS, screw-fastened, sheet steel

The 180° opening angle allows unhindered access. May be installed optionally from the inside or outside of the enclosure. Simply replace 3 enclosure panel fasteners with hinges. Despite the hinge, the protection category of the enclosure is retained.



## Features

Model No.	TS 8800.110
Product description	The 180° opening angle allows unhindered access. Optionally installed either from the inside or outside of the enclosure.
Benefits	Despite the hinge, the protection category of the enclosure is retained
Applications	Replace the 3 enclosure panel holders with hinges
Material	Die-cast zinc
Colour	RAL 7035
Supply includes	Assembly screws
Note	Side panel and door hinges may only be installed on the same enclosure section when using a 180° door hinge Caution! Hinged and non-hinged side panels, doors and rear panels must always be opposite one another. Only one surface of each vertical enclosure section is available for mounting (hinges of the side panel).
Packs of	6 pc(s).
Net weight	0.87

# Features

Gross weight	0.982
Customs tariff number	83021000
EAN	4028177246997
ETIM 9	EC001167
ECLASS 8.0	27409219