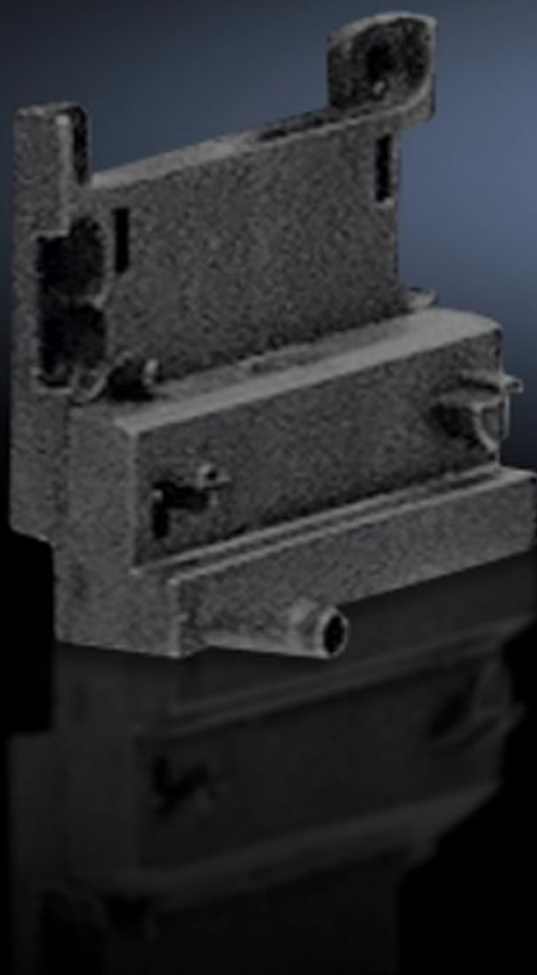


Rittal – The System.

Faster – better – everywhere.



SV 9342.820 PinBlock Plus

State: 16/08/2025 (Source: [rittal.com/ie-en](https://www.rittal.com/ie-en))

ENCLOSURES

POWER DISTRIBUTION

CLIMATE CONTROL

IT INFRASTRUCTURE

SOFTWARE & SERVICES

FRIEDHELM LOH GROUP



SV 9342.820 - PinBlock Plus for starters with increased contactor attachment

For starters with increased contactor attachment.



Features

Model No.	SV 9342.820
Product description	Mounted by simply clipping onto the PinBlock 9342.800/.810.
Material	Polyamide
Colour	RAL 9005
Note	UL approval in conjunction with OM adaptor/support
Packs of	5 pc(s).
Net weight	0.03
Gross weight	0.035
Customs tariff number	39269097
EAN	4028177503861
ETIM 9	EC002270
ECLASS 8.0	27400613