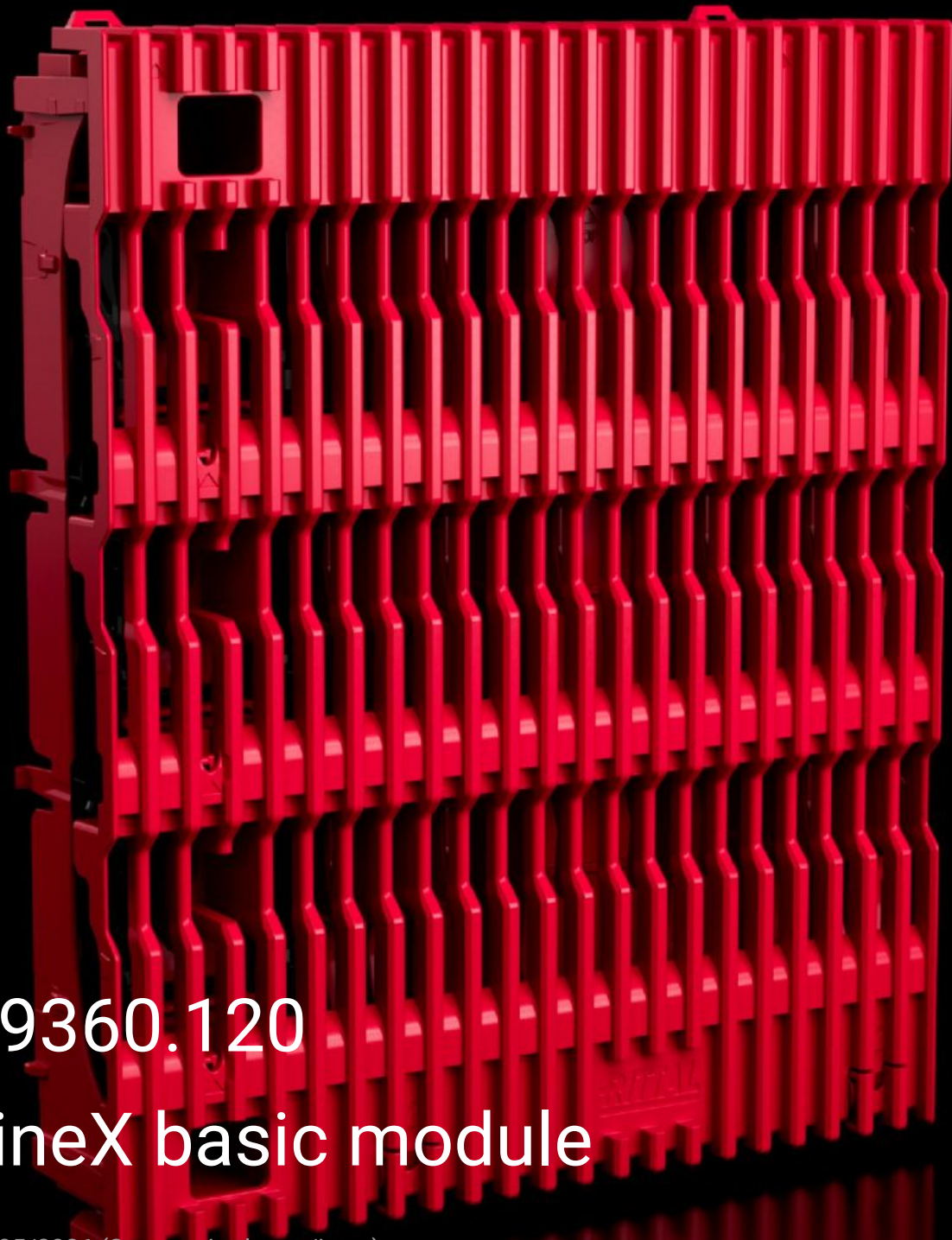


Rittal – The System.

Faster – better – everywhere.



RX 9360.120 RiLineX basic module

State: 22/05/2026 (Source: rittal.com/ie-en)

ENCLOSURES

POWER DISTRIBUTION

CLIMATE CONTROL

IT INFRASTRUCTURE

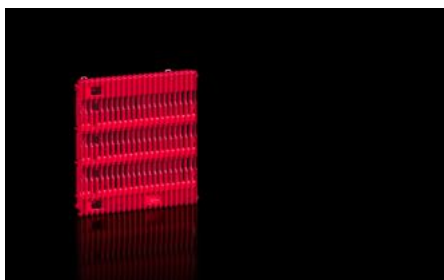
SOFTWARE & SERVICES

FRIEDHELM LOH GROUP



RX 9360.120 - RiLineX basic module

RiLineX basic module, 3-pole, width 200 mm, with integrated busbar support suitable for top mounting, for the modular RiLineX board. Supports the integration of flat bars from 15x5 mm to 30x10 mm. End-to-end contact hazard protection up to IP 2XB, upgradable to IP 3X. The basic module comprises a base section including busbar support and a top section for contact hazard protection. When compiling a complete solution from basic modules, end modules are additionally required.



Features

Model No.	RX 9360.120
Benefits	Scalable system lengths with basic modules Simple assembly Scalable rated currents thanks to variable busbar cross-sections Tested short-circuit resistance up to 65 kA Suitable for applications up to 1000 V AC and up to 1500 V DC Extensive range of system accessories Contact hazard protection up to IP 2XB, upgradable to IP 3X Tested and certified to IEC and UL Simple extension and baying
Material	Polyamide (PA 6) Fire protection corresponding to UL 94
Colour	RAL 35745 RAL 9005
Supply includes	Basic module base section Basic module (contact hazard protection cover) Assembly screws

Features

IP protection category to IEC 60529	IP 2XB
Standards	IEC/EN 61439-1 UL 508
Rated current max.	800 A
Note	Busbars are not included with the supply
Electrical ratings UL (SCCR)	65 kA - 600 V, RMS, unprotected 100 kA - 600 V, Fuse Class L max. 1600 A, JDDZ/7 100 kA - 480 V, circuit breaker max. 800 A, DIVQ/7 65 kA - 600 V, circuit breaker max. 800 A, DIVQ/7
Centre-to-centre spacing of busbars	60 mm
Rated impulse withstand voltage U _{imp}	12 kV
Rated voltage	1,000 V AC 600 V AC (UL) 1,500 V DC 600 V DC (UL)
Rated insulation voltage U _i	1,000 V AC 1,500 V DC
Rated short-term withstand current/t	65 kA/500 ms
Overvoltage category	4
Contamination level	3
Number of poles	3-pole
Fundamental frequency	50...60 Hz
Ambient humidity (non-condensing)	10...90 %
To fit busbars	15 x 5/10 20 x 5/10 30 x 5/10
Operating temperature range	-5 °C...55 °C

Features

Storage temperature range	-25 °C...75 °C
Dimensions	Width: 200 mm Height: 246 mm Depth: 49.2 mm
Packs of	6 pc(s).
Net weight	5.16 kg
Gross weight	5.547 kg
PCF per pack (cradle-to-gate)	33.09
Customs tariff number	85369010
ETIM 9	EC001900
Product description	<p>RiLineX basic module, 3-pole, width 200 mm, with integrated busbar support suitable for top mounting, for the modular RiLineX board. Supports the integration of flat bars from 15 x 5 mm to 30 x 10 mm. The RiLineX 60 mm modular board is comprised of one or more basic modules, end modules, baying sets and busbars. The modular design of this system offers maximum flexibility and may be individually adapted. Configurations up to a maximum system length of 2400 mm are supported. No tools are required for assembly. Cables (such as control lines) may also be routed in the rear section of the board, for added flexibility with system assembly. Comprehensive digital product data means significant time savings with planning and documentation. The board is IEC 61439 and UL 508-approved and may be mounted horizontally, vertically and overhead. What's more, the system is easily extendible. It is suitable for AC applications up to 1000 V AC and DC applications up to 1500 V DC, offering a versatile solution for a wide range of application areas. There are no busbars included with the scope of supply. The end modules, baying sets and baying connectors may be purchased separately.</p>

Approvals

Approvals	UL + C-UL (listed)
-----------	--------------------

Approvals

Explanations

Declaration of conformity
PCF-declaration

Tender text

RiLineX Basismodul

RiLineX basic module for building individually configurable RiLineX boards.

End-to-end contact hazard protection up to IP 2XB, upgradable to IP 3X.

Suitable for mounting horizontally, vertically and above head height.

Supports cable routing in the rear section.

For voltages up to 1000 V AC and 1500 V DC.

Tested short-circuit resistance up to 65 kA.

IEC and UL approved.

Product information

Number of poles: 3

Busbar dimensions: 15/20/30 mm x 5/10 mm

Rated current max.: 800 A

Dimensions: 200 mm x 246 mm x 49,2 mm (WxHxD)

Manufacturer: Rittal GmbH & Co. KG

Type: 9360120